

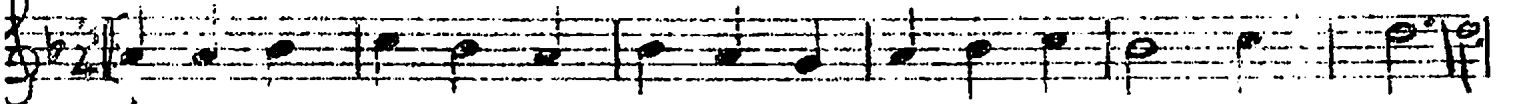
# KÜRDİ ŞARKI

Söz: Selahattin Özül

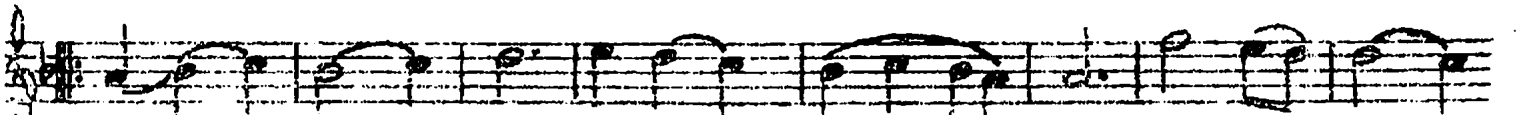
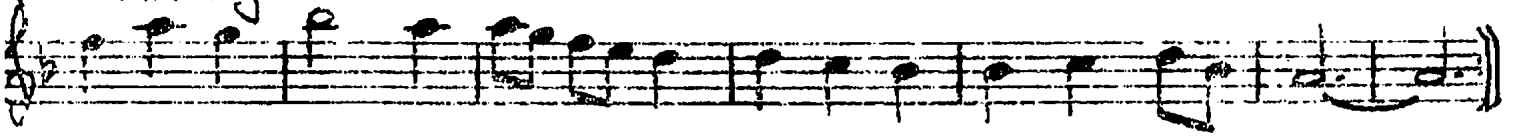
Sema:

(YÜZÜNÜN İFADESİ GÖZLERİNİN İÇİNDE)

Müzik: Güner ERMAN



Aranagime



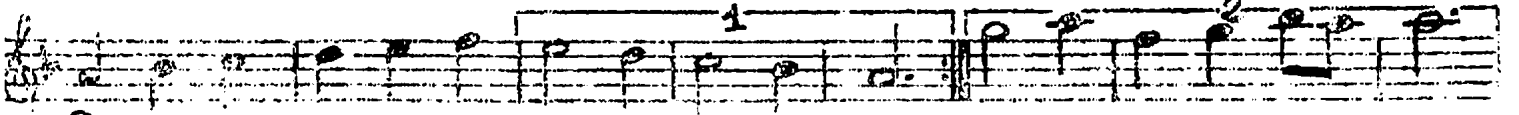
Yü zü nün i fa de si göz le ri



ni i çin

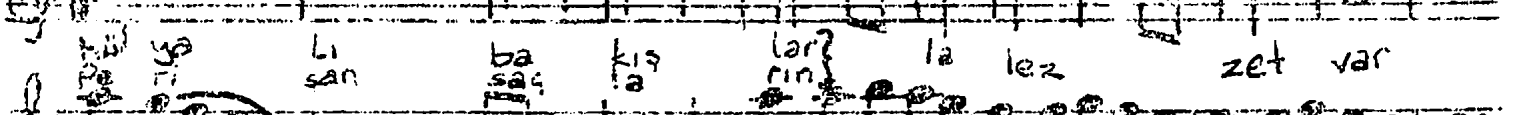


de (SAZ)

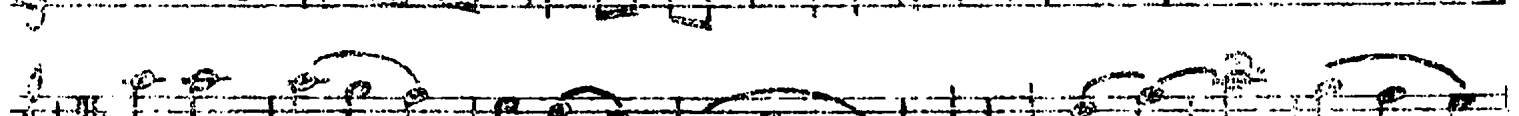
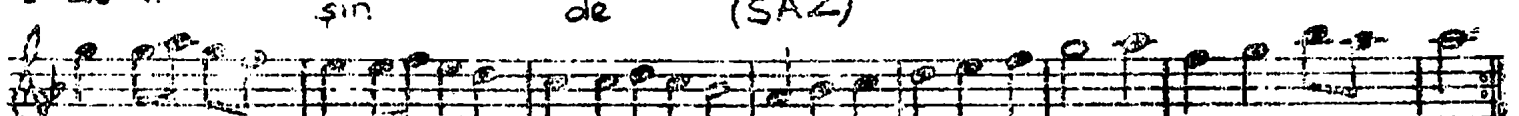
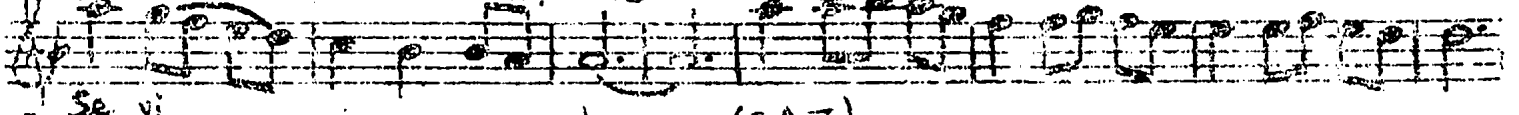


(SAZ)

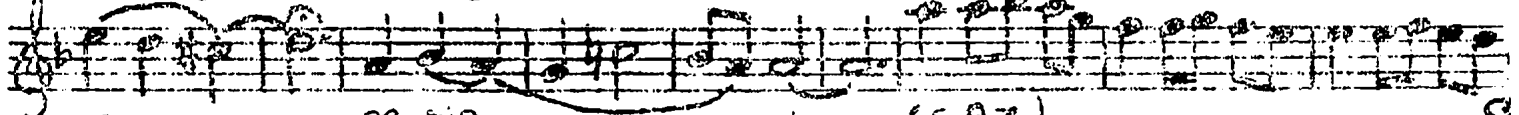
(SAZ)



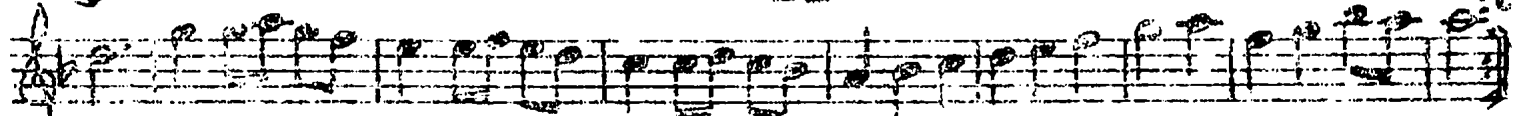
Se vi şin de (SAZ)



Bu gän lüm ye min li dir ö mür bo



pe şin de (SAZ)



Yüzünün ifadesi gözlerinin içinde

Hülyalı bakışlarla lezzet var sevişinde

Bu gön lüm yemintiler ömür boyu peşinde

Perişan saçlarıyla lezzet var sevişinde