

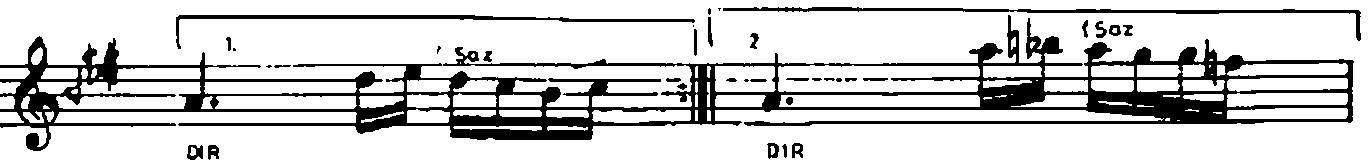
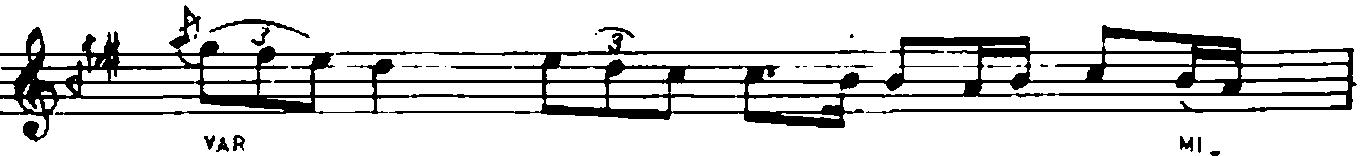
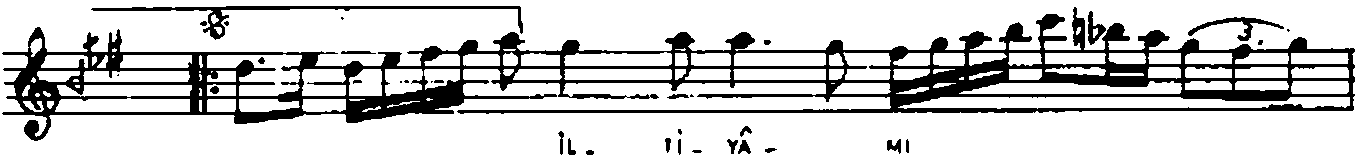
AĞIR AKSAK

# KARCIĞAR ŞARKI

MÜZİK: SELÂNIKLİ AHMED EFENDİ

♩ = 72

ZAHM-I HICRÂNİM GİBİ ÂLEMDE YÂRE VAR MIDİR





ZAHM-I HİCRÂNİM GİBİ ÂLEMDE YÂRE VAR MIDİR  
İLTİYÂMI YAREME BİLMEM Kİ ÇÂRE VAR MIDİR  
ÂLEM İÇRE BEN GİBİ BİR BAHTI KARA VAR MIDİR  
İLTİYÂMI YAREME BİLMEM Kİ ÇÂRE VAR MIDİR

YEZİN FÂİLÂTÜN / FÂİLÂTÜN / FÂİLÜN

ZAHM-I HİCRÂN. AYRILIK ACISININ AÇTIĞI YARA  
İLTİYÂMI YARANIN İYİLEMESİ