

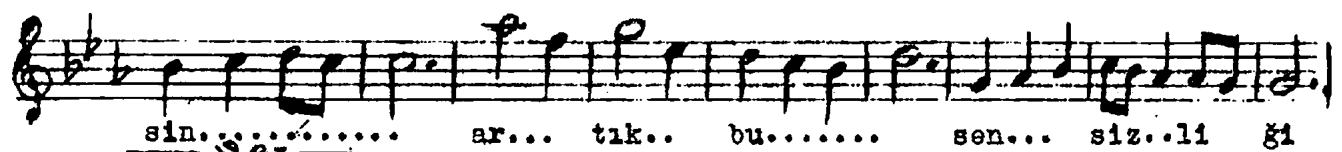
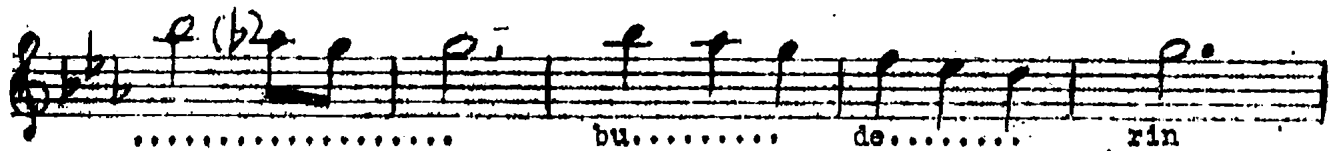
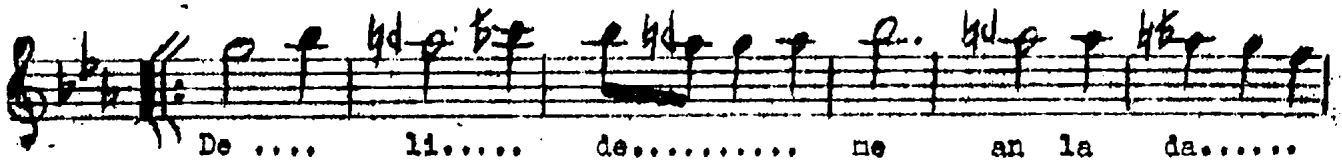
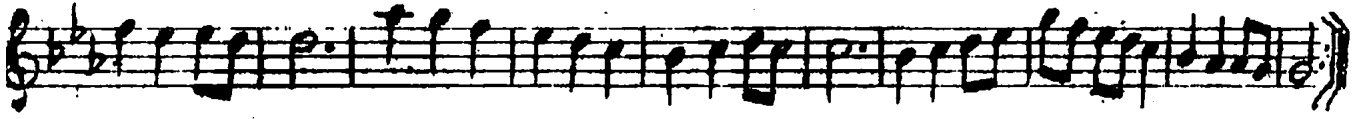
Senâî

KÜRDİLİHİCAZKÂR ŞARKI

Beste: Gevherî Osmanoğlu

Güfte: Behçet Kemal Çağlar

(Avañânesî)



Bir kırılmış aynaya döndürdün de beni sen  
Artık tanıyanazsın içindeki seni sen  
Deli deme anla da bu derin denizliği  
Sen de gideremezsin artık bu sensizliği.