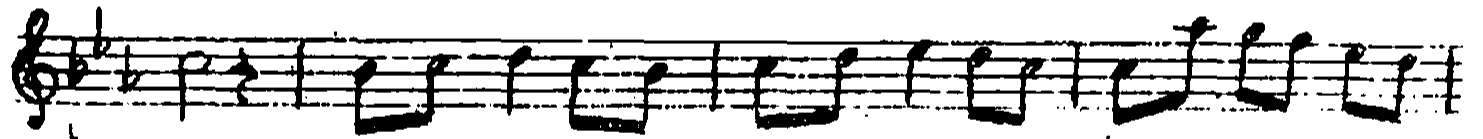
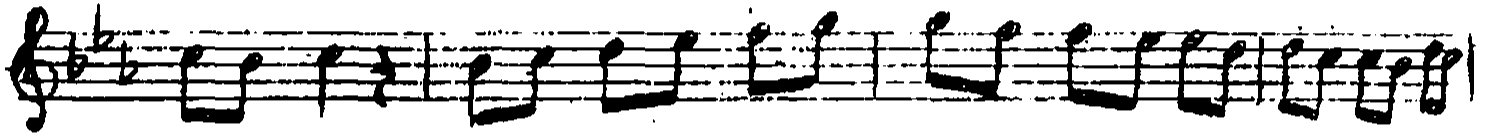


Usulü: Semâf

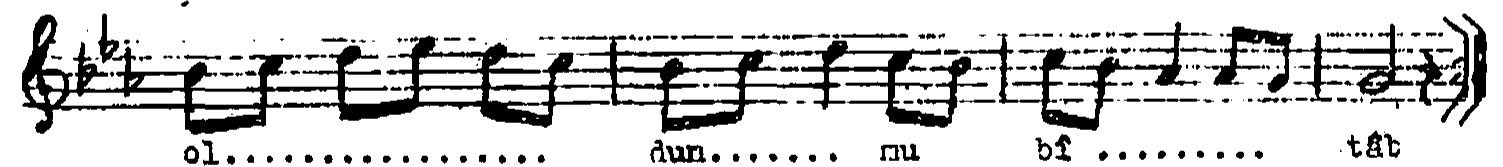
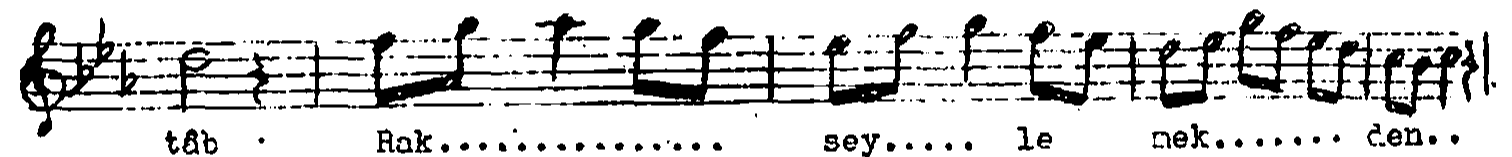
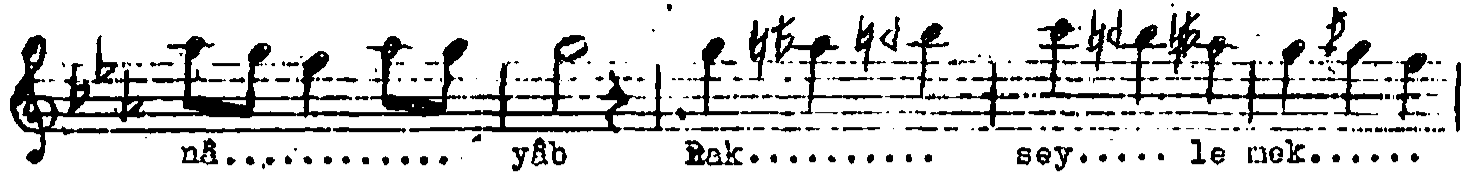
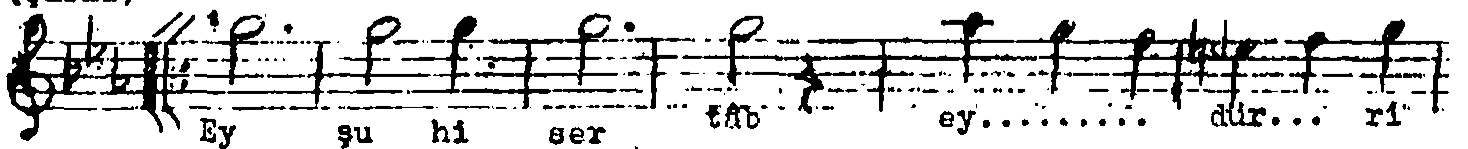
KÜRDİLİHİCAZKÂR ŞARKI

Beste: Lem'i Atlı

(Arenâğnesi)



(Şarkı)



(Meyan)

Dev rey li yor..... sun... nâ..... nen.. di
 neh..... tâb . Dev..... sey..... li yor...
 sun nâ..... nen.... di neh..... tâb
 Rak..... sey..... le mek..... den.... ol.....
 dun... nu bi tâb

(Nakarat)

Rak..... sey..... le mek.....
 den.... ol..... dun... nu bi tâb

Ey şüh-i sertâb ey dürr-i nâyâb
 Raks eylemekden oldun nu bitâb ?
 Derr eyliyorsun mânend-i mehtâb
 Raks eylemekden oldun nu bitâb ?

Şuh - şen
 Sertâb - çok parlak
 Dür - inci
 Nâyâb - bulunmaz
 Di-tâb - güçsüz, yorgun
 Mânend - benzer
 Mehtâb - ay ışığı