

KÜRDİLİ-HICAZKÂR SARKI Güfte: Sadan KALAVAN
- Gümüş tellerle örsem - Berce: Melûhat PARS (ist. 1959)

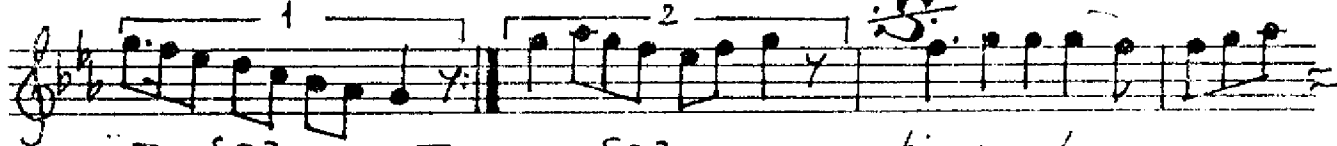
Curcuna



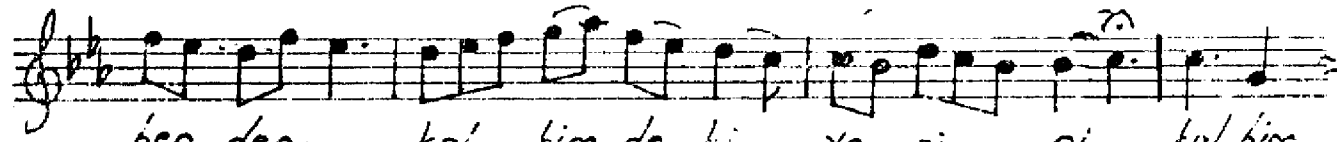
Gümüş teller le... ör. sem. . sa çı. nin. her



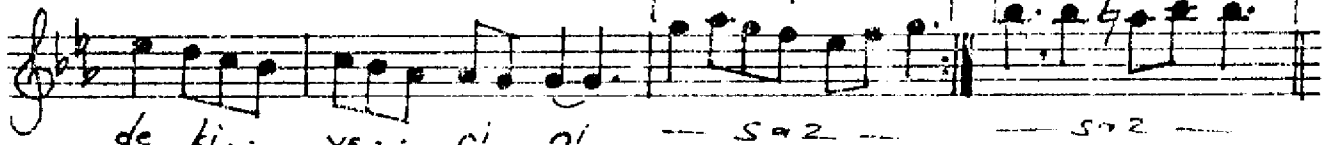
te.. li. ni.. . sa çı. nin. her.. te.. li. ni..



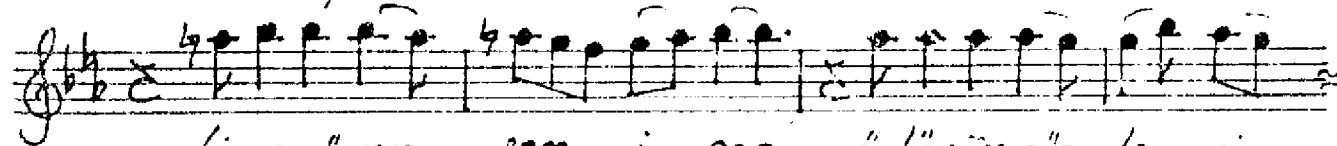
— saz — — saz — — kim se a la. maz..



ben den.. kal.. bim de ki.. ye ri.. ni.. kal bim



de ki.. ye.. ri ni — saz — — saz —



bir an görmez. sem.. i. nan ö lü rüm göz le ri



ni.. . i nan o göz.. le.. ri ni — saz —

B. BUKUT
— 1985 —

Gümüş tellerle örsem saçının her telini
Kimse alamaz benden kalbimdeki yerini
Bir an görmezsem inan ölürüm gözlerini
Kimse alamaz benden kalbimdeki yerini