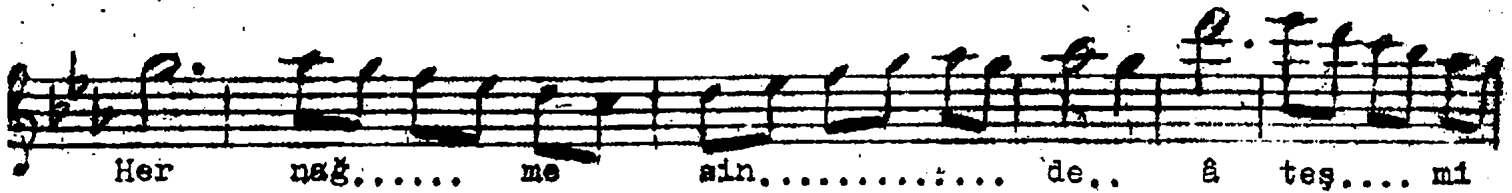
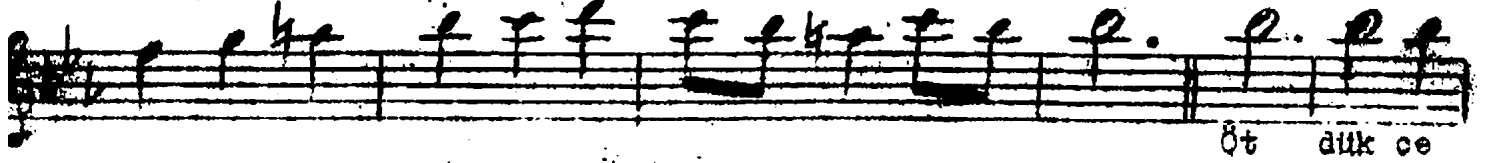
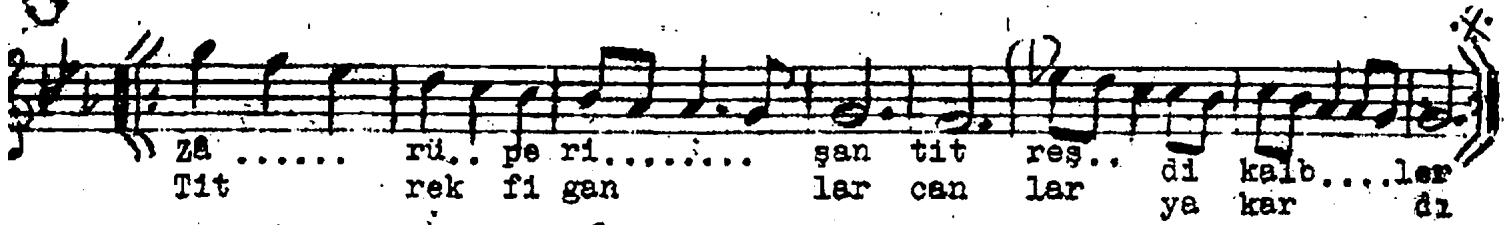


KÜRDİLİHİCAZKÂR ŞARKI

Lem'i Atlı

Sembî

(Aranağmesi)



Nazlandı bülbül güller sarardı,
Zârü perişân titreşti kalbler
Öttükçe bülbül gözler karardı
Her nağesinde âteş mi vardı

(Şon nakarat) Titrek figanlar canlar yakardı.