

Sa na ben kal bi ni ver..... dîn

ey şa fak ten..... lî..... ka

dîn ----SAZ---- ----SAZ----

Se ni meo nun..... gi bi aev

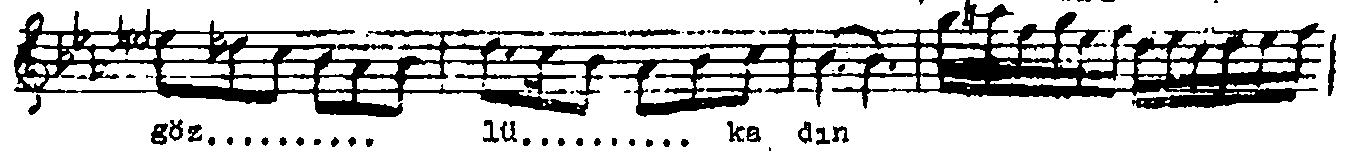
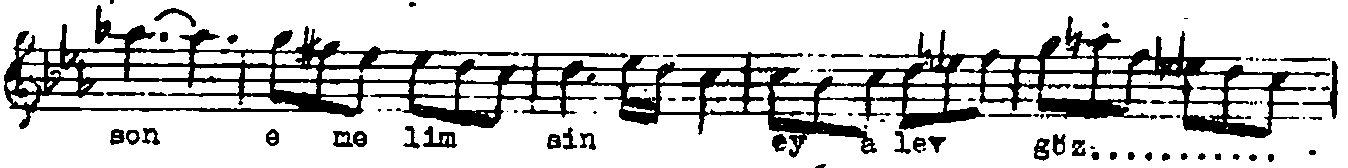
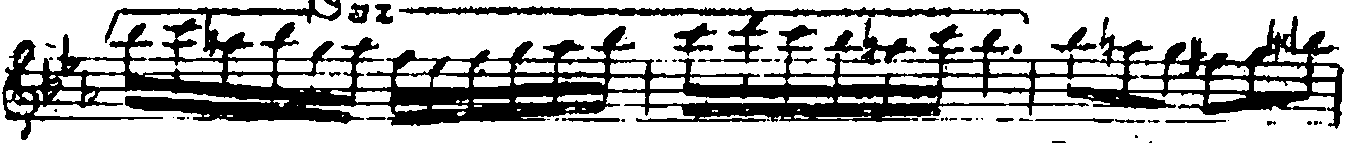
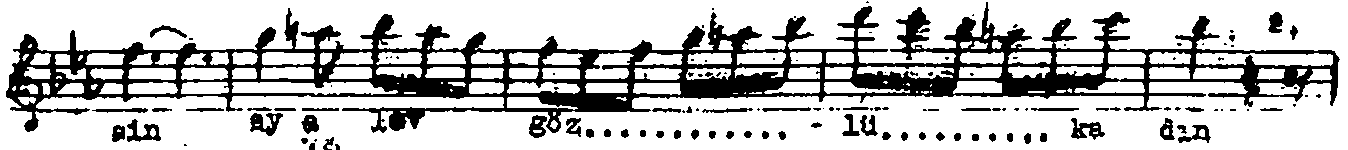
dîn ey ba har yüz..... lû..... ka

dîn se ni meo

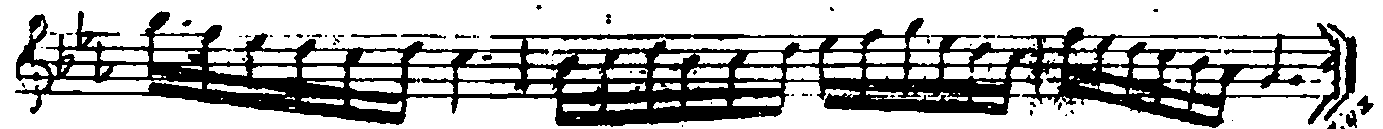
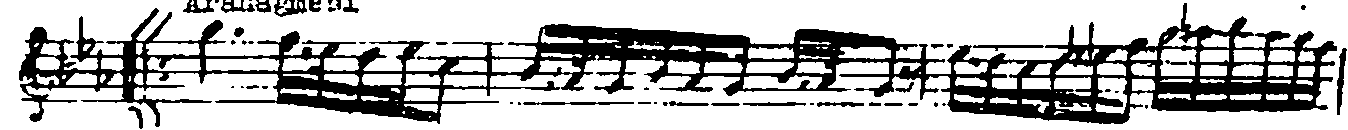
nûn gi bi aev dîn ey ba har yüz

..... lû..... ka dîn

Be nim en..... son..... o me lim.. →



Aranağmesi



Sana ben kalbimi verdim ey şafak tenli kadın
Seni mecnun gibi ucvdim ey bahar yüzü kadın
Benim en son emelimsin ey alev gözlü kadın
Ey şafak tenli bahar yüzü alev gözlü kadın.