

Yürük Semâî

25

MÂRÛB - BÛSÛLİK YÜRÜK SEMÂÎ

Dellîl-sâde İsmail Efendî

(♩ = 100) (Tabt-gâh eyleveli gülşeni sultân-ı neşin)

AH TAH- TI- GÂH EY-- LE- YE- Lİ GÜL-ŞE- Nİ SUL

TÂ-- NI NE- SİM GEL GEL GEL

GEL GEL AH OL- DU ER..

HÂ RI ÇE- MEN TÂ- Bİ' İ FER- MÂ NI NE- SİM

GEL GEL GEL FER.

MÂ- Nİ NE- SİM VAY YAR

YAR GEL İŞ- VE HÂ... ZİM

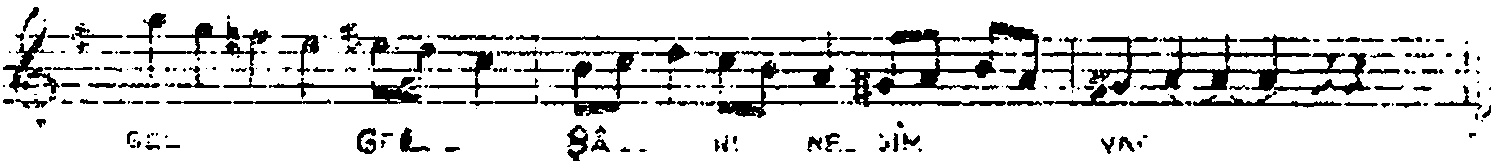
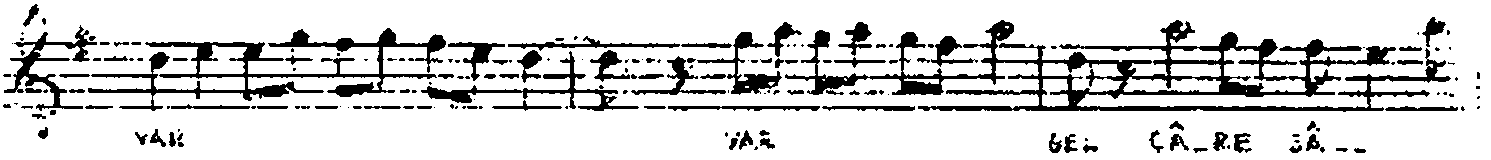
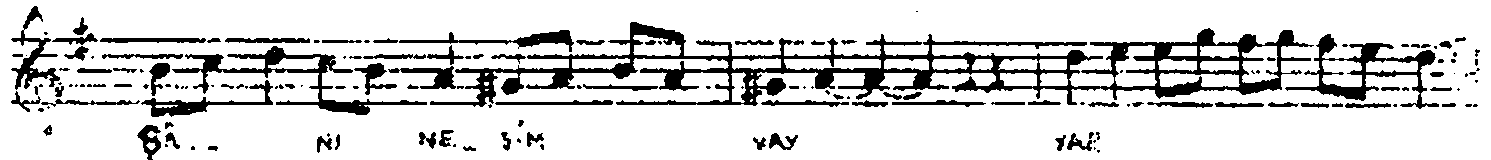
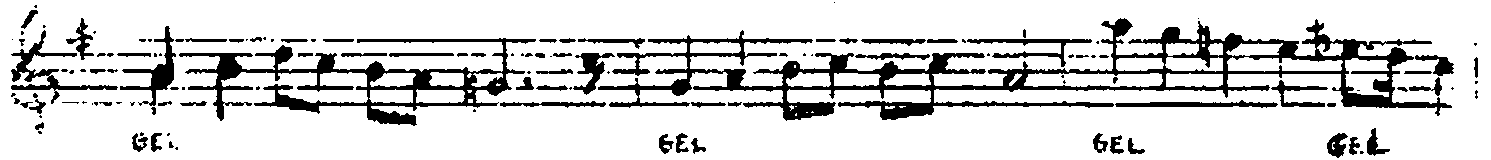
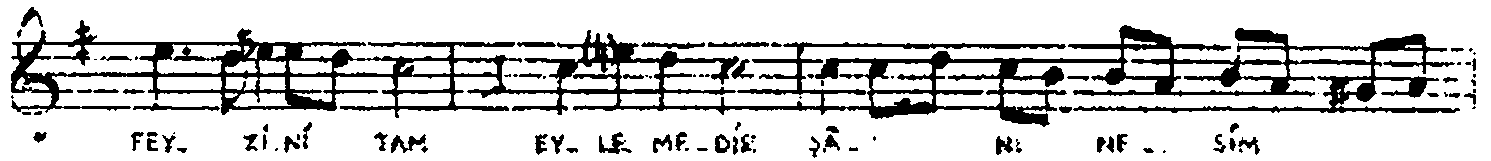
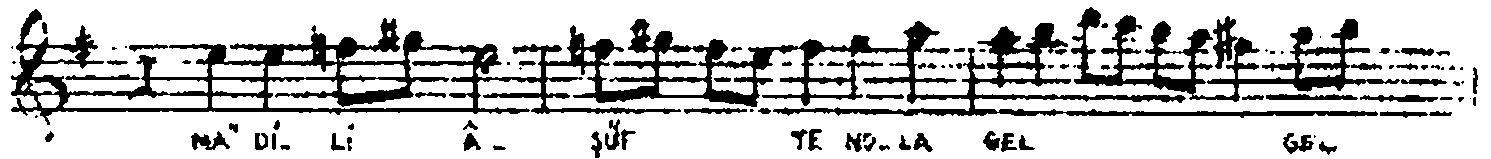
YAR YAR GEL.. VÂ FE JÂ

ZİM AH AZ- Nİ GÜL.. TÂ. RE. SA. NA

MUN- TA- ZİK EH- Lİ VE- TÂ GEL

GEL GEL FER MÂ Nİ NE SİM

VAY MEYÂN DU NİC İŞ VÂR OL SA TUN Gİ



Taht-gân eyleveris gülşeni sultân-ı neâis
 Oıdu ezhâr-ı yemen tâbi'-ı fermân-ı neâin
 Hısse-yâb olsa "Nazîme", dil-i aşûfte n'olsa
 Alome feyzini tav eylesmedir gân-) nesit