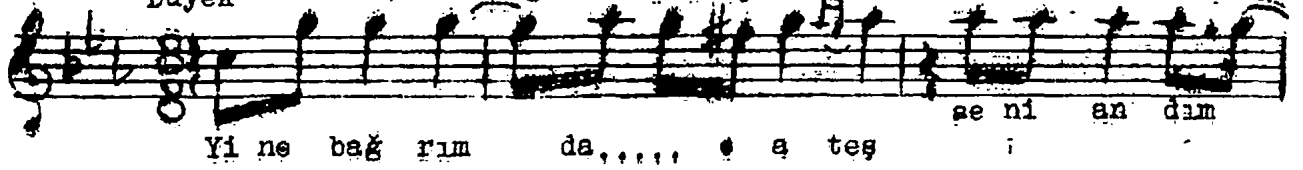


KÜRDİLİHİCAZKAR ŞARKI
(Yine bağrında • ateş)

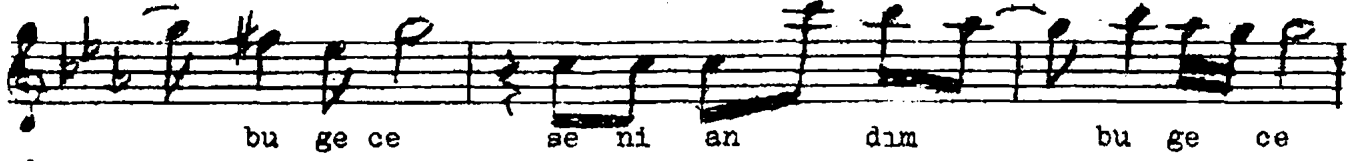
Beste: Kasım İnaltekin

Düyek



Yi ne bağ rım da, • a teş i

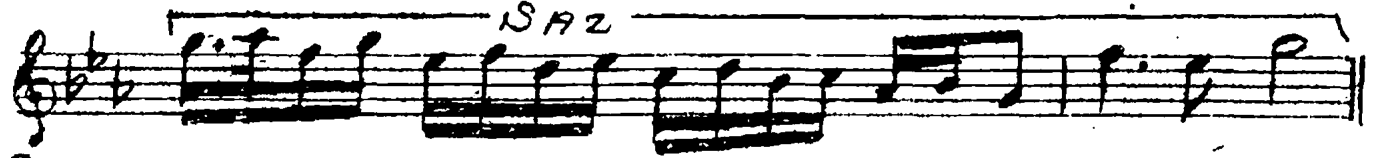
se ni an dım



bu ge ce

se ni an dım

bu ge ce



SAZ



Se ni an dım

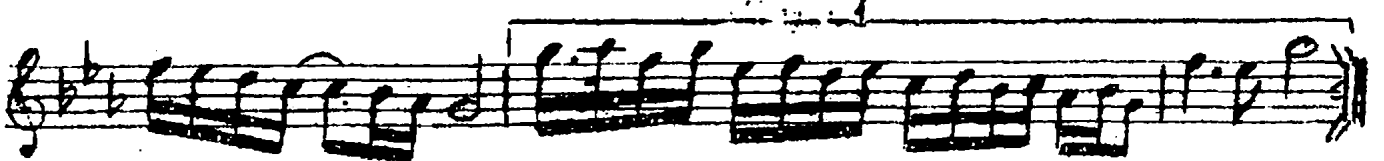
ca ne vim den



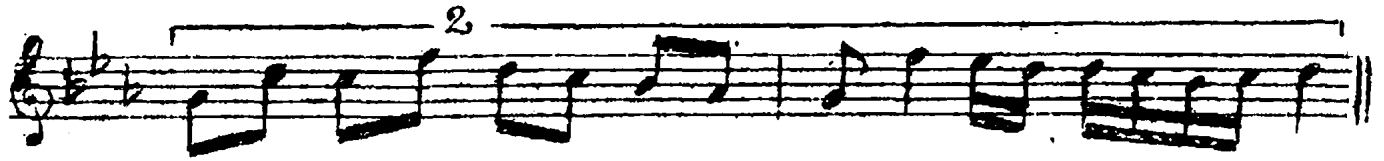
ya ra lan dım

bu ge ce

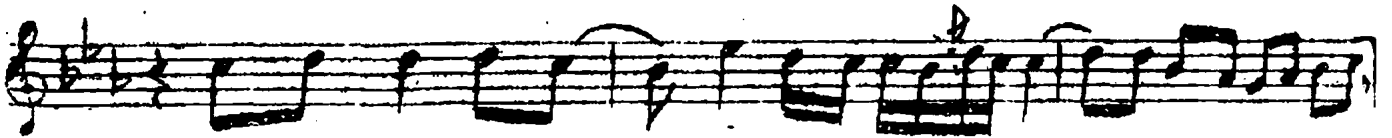
ya ra lan dım



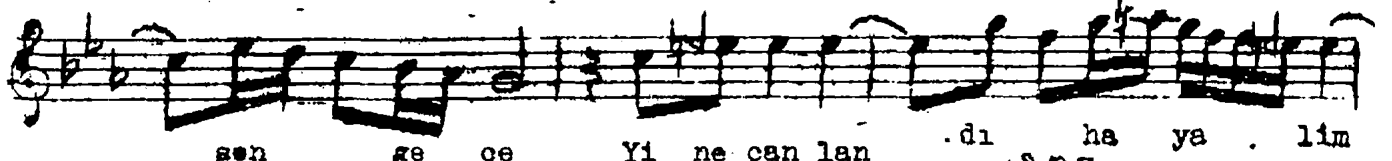
..... bu ge ce



2



Yi ne can lan dı ha ya lim de • son gün



son ge ce Yi ne can lan dı ha ya lim



de • son gün son ge ce



Yine bağrında • ateş seni andım bu gece
Seni andım can evimden yaralandım bu gece
Yine canlandı hayâlimde • son gün son gece
Seni andım can evimden yaralandım bu gece.