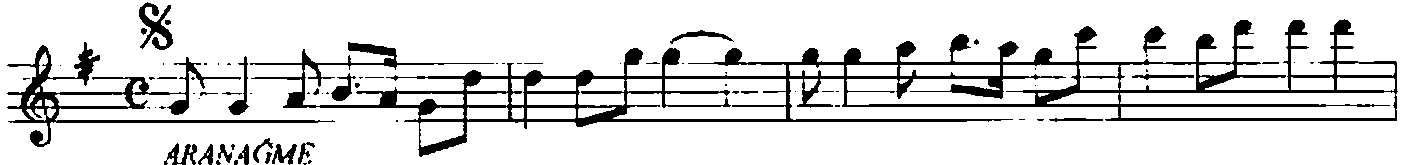


# MAHUR ŞARKI

Beste: Alâeddin YAVAŞÇA  
Güfte: Dr. Sahir DAĞCIOĞLU

Usûl:

"Boğaziçi bir yüzük İstinye onun taşı"



ARANAĞME



BO ĞAZ I ÇI BİR YÜ ZÜK İS TİN YE O NUN TA ŞI



(SAZ.....)



İN SAN OR DA U NU TUR SA ÇI A ĞAR TAN YA ŞI



İN SAN OR DA U NU TUR SA ÇI A ĞAR TAN YA ŞI



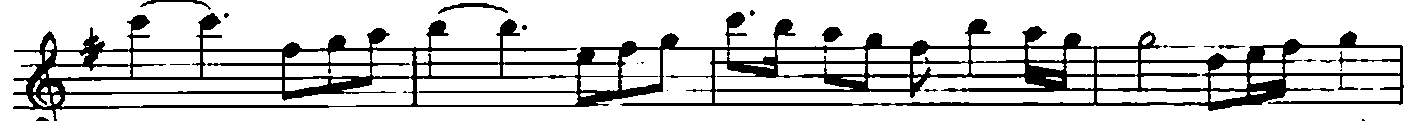
(SAZ.....)



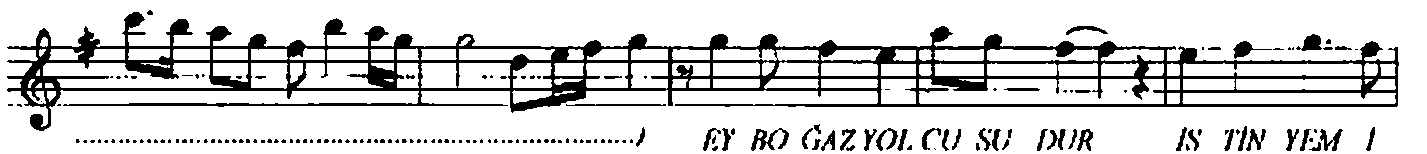
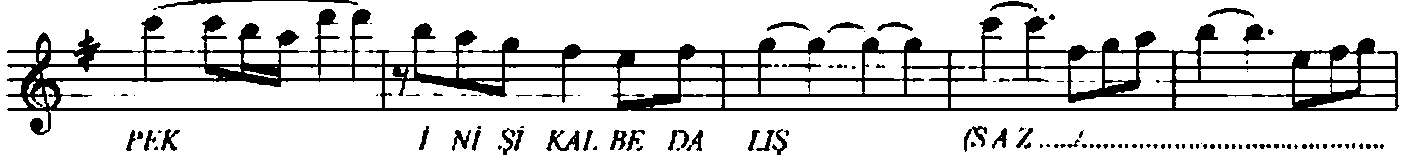
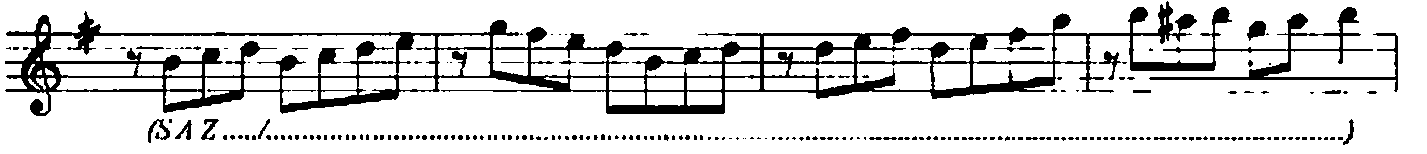
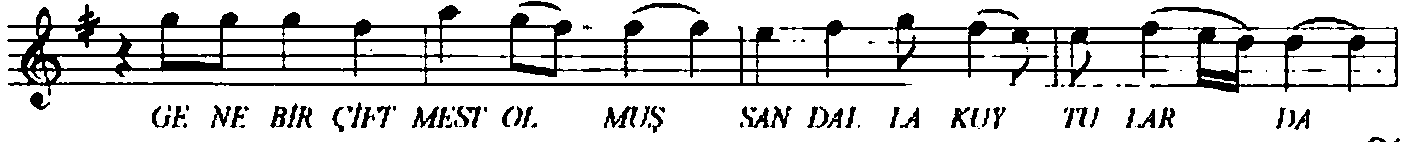
KAH KA HA LAR ŞEN SES LER YAN KI VE RİR SU LAR DA



KAH KA HA LAR ŞEN SES LER YAN KI VE RİR SU LAR DA



(SAZ.....)



Dr.Semra Özgün  
18.01.2004

BOĞAZIÇI BİR YÜZÜK İSTİNYE ONUN TAŞI  
İNSAN ORDA UNUTUR SAÇI AĞARTAN YAŞI  
KAHKAHALAR ŞEN SESLER YANKI VERİR SUJARDA  
GENE BİR ÇİFT MEST OLMUŞ SANDALLA KUYTULARDA

GÜNEŞ GÖNLE ŞEVK VERİR AŞK FİSILDAR DALGALAR  
MARTILAŞAN KALPLERDE İHTİRASLAR YALPALAR  
YOKUŞU SEVDÂLI PEK İNİŞİ KALBE DALIŞ  
EY BOĞAZ YOLCUSU DUR İSTİNYEM İLE TANIŞ