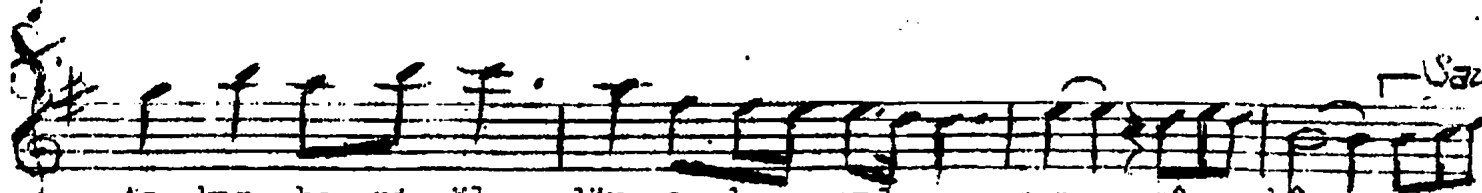
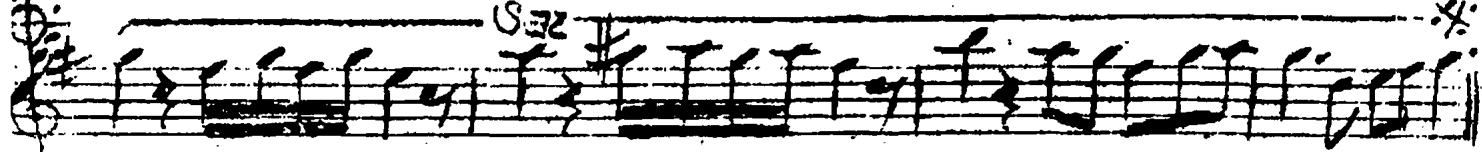


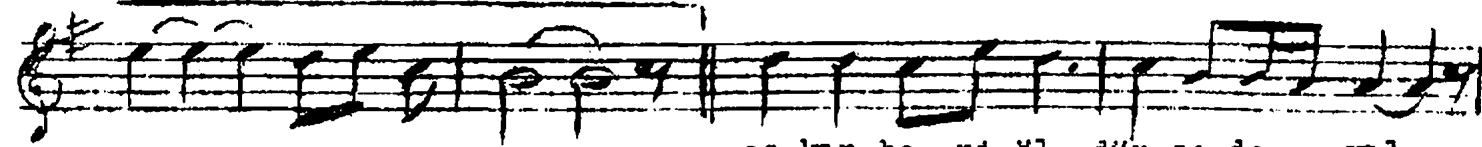
Ben der... di me hiç ça re bul mam sâ



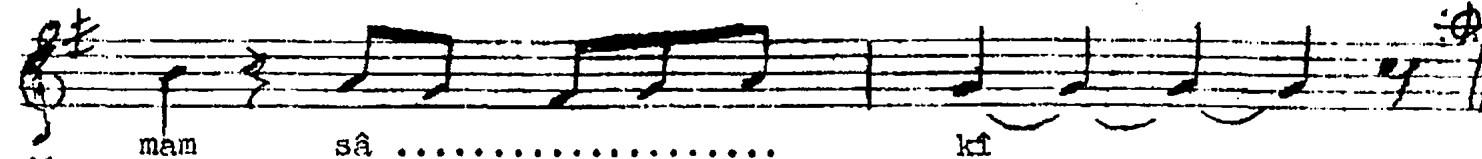
kî ah..... ah..... sâ ... kî



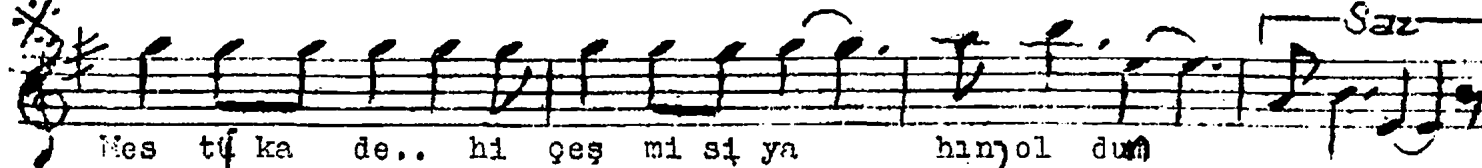
Aş kın be ni öl dür se de yıl... mam sâ kî



aş kın be ni öl dür se de yıl



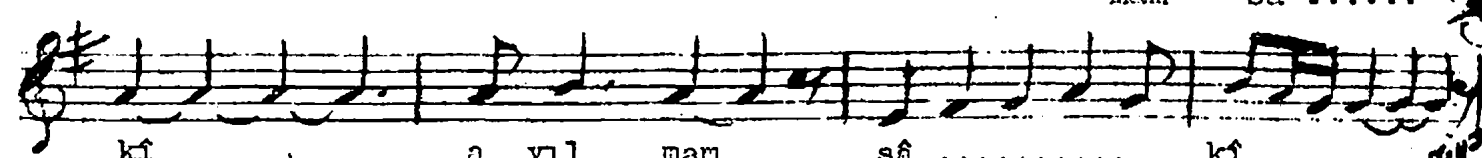
mam sâ kî



Neş tû ka de.. hi çeş mi sı ya han)ol dum



Dol sa ka de hi öm rüm a yıl.. mam sâ



kî a yıl mam sâ kî

Ben derdime hiç çare bulmam sâkî
 Aşkın beni öldürsede yılmam sâkî
 Neştü kadehi geçmi siyahı oldum
 Dolsa kadehi ömrüm ayılmam sâkî...