

MUHAYYER ŞARKI

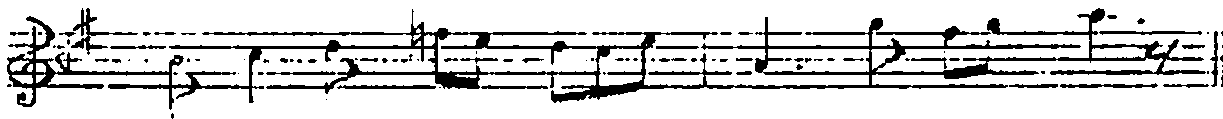
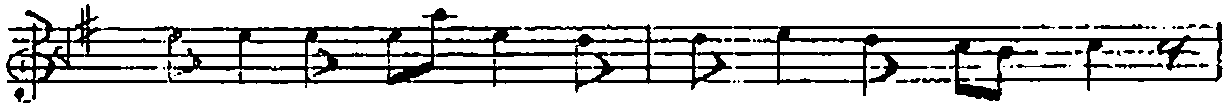
Beste: BAHİRE ALTINTAŞ

AKSAK
(♩ = 200)

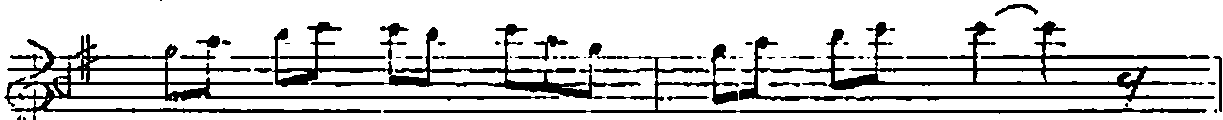
(Çağlayan sular gibi kalplere akışın var) Güfte: ZIYA POLAT



(ARANÇÖME



ÇAĞ LA YAN SU LAR GI Bİ
GÖZ LE RİN SAN KI CEY İAN



KALP LE RE A KI ŞİN VAR
DU DA ÇİN GON .. CA BİR GÜL



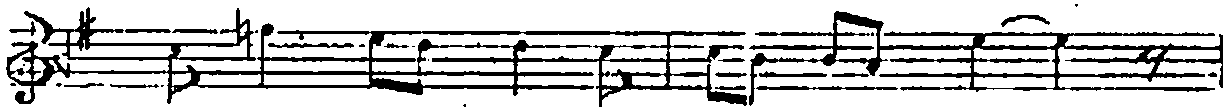
KALP LE RE A KI ŞİN VAR
DU DA ÇİN GON CA BİR GÜL



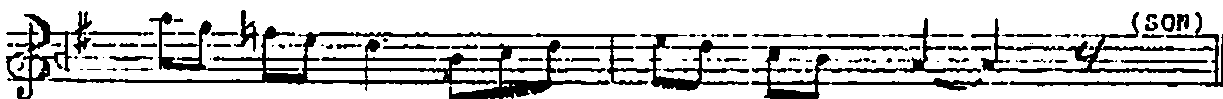
(SAZ



FU SUN KÂR GÖZ LE RİN LE
MİS KO KAN YA NAK .. İA RİN

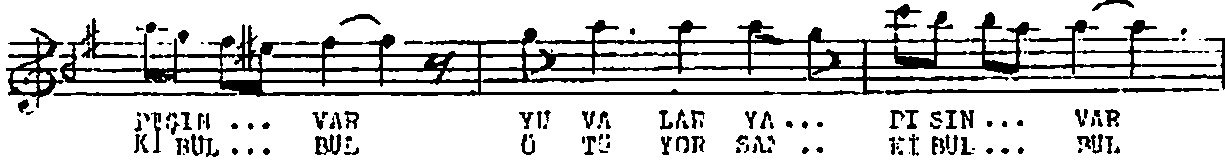
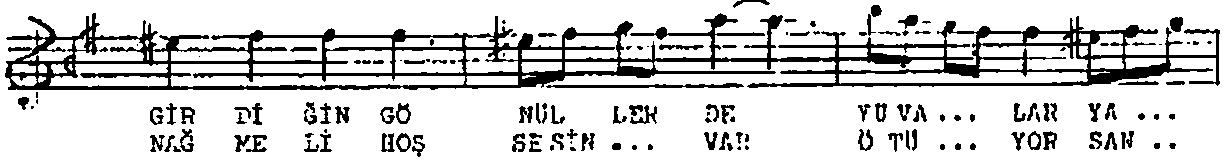


NE TAT LI BA KI ŞİN VAR
ME NEK ŞE LA LE SUN DÜL



NE TAT LI BA KI ŞİN VAR
ME NEK ŞE İA LE SUN DÜL

(SON)



ÇAĞLAYAN SULAR GİBİ KALPLEŞE AKIŞIN VAR
FUSUNKAR GÖZLERİNLE, NE TATLI HAKIŞIN VAR
GİRDİĞİN GÖNÜLLERDE, YUVALAR YAPIŞIN VAR
FUSUNKAR GÖZLERİNLE, NE TATLI HAKIŞIN VAR

GÖZLERİN SANKİ CEYLÂN, DUDAĞIN GONCA BİR GÜL
MİS KOKAN YANAKLARIN, MENEKŞE, LÂLE, SUNBÜL
NAĞMELİ HOŞ SESİN VAR, ÖTÜYOR SANKİ BÜLBÜL
MİS KOKAN YANAKLARIN, MENEKŞE, LÂLE, SUNBÜL...

(ZİYA POLAT)