

MAHÛR ŞARKİ

ETMEDİN ASLÂ TERAHUM PEK ÇOK ÜZDÜN CÂNIMI

SÖZ ve MÜZİK:
LEYLA SAZ

AĞIR AKSAK

♩ :78



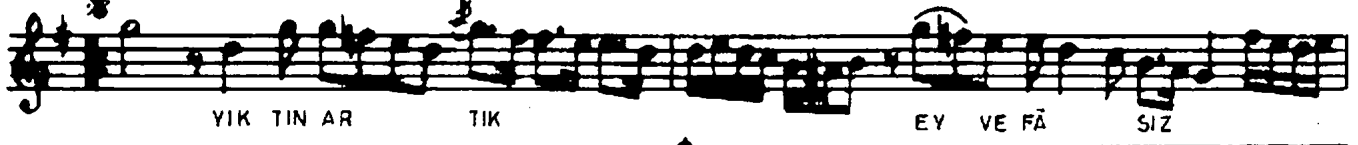
ET MEDİN AS

LÂ TE RAH HUM



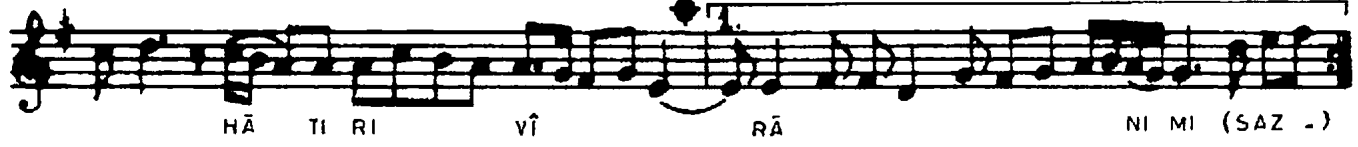
PEK ÇOK ÜZ DÜN CÂ

NI MI (SAZ)



YIK TIN AR TIK

EY VE FÂ SIZ



HÂ TI RI VÎ

RÂ

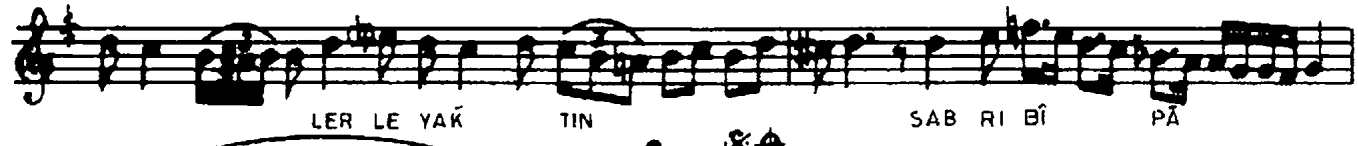
NI MI (SAZ -)



RA

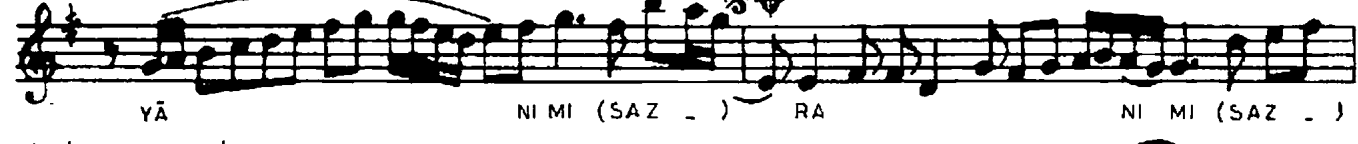
NI MI

MÛT HİŞ Â TEŞ



LER LE YAK TIN

SAB RI BÎ PÂ



YÂ

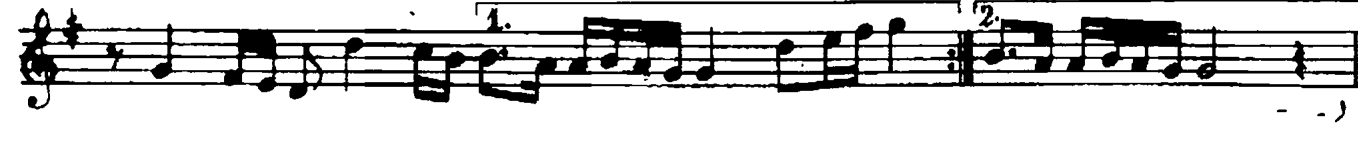
NI MI (SAZ -)

RA

NI MI (SAZ -)



(SAZ -)



ETMEDİN ASLÂ TERAHUM PEKÇOK ÜZDÜN CÂNIMI
YIKTIN ARTIK EY VEFÂSIZ HÂTİR-I VÎRÂNIMI
MÛTHİŞ ÂTEŞLERE YAKTIN SABR-I BÎ-PÂYÂNIMI
YIKTIN ARTIK EY VEFÂSIZ HÂTİR-I VÎRÂNIMI

Y. CAVGA