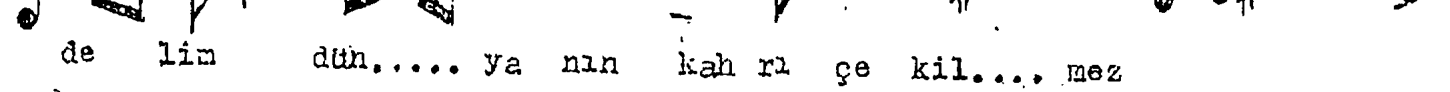
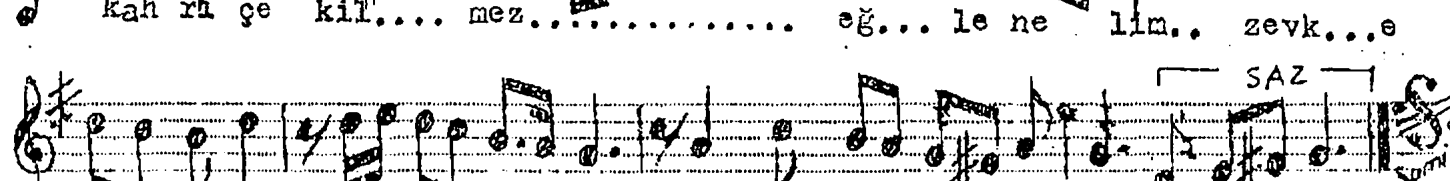
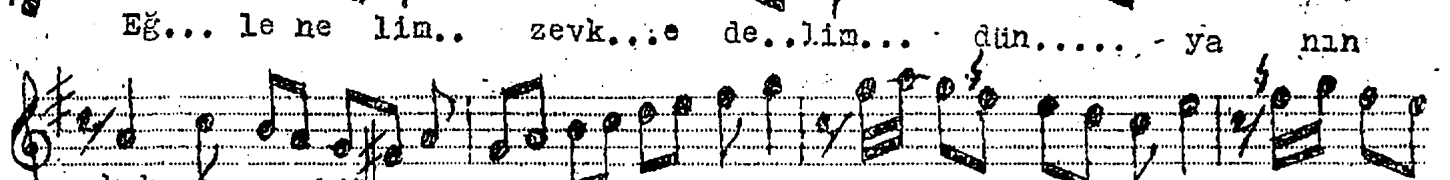
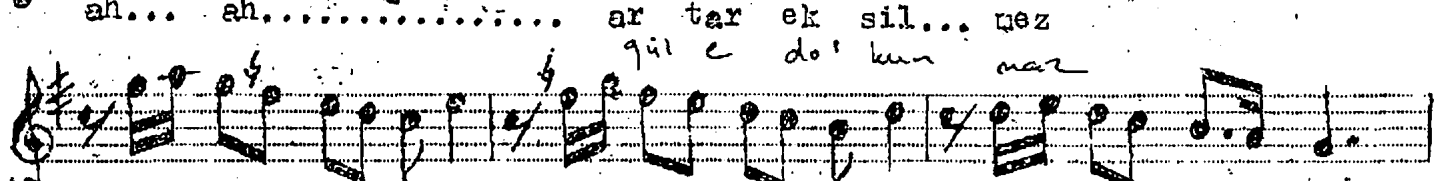
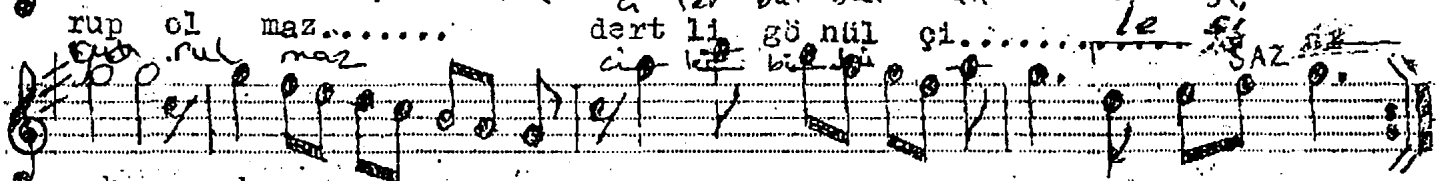
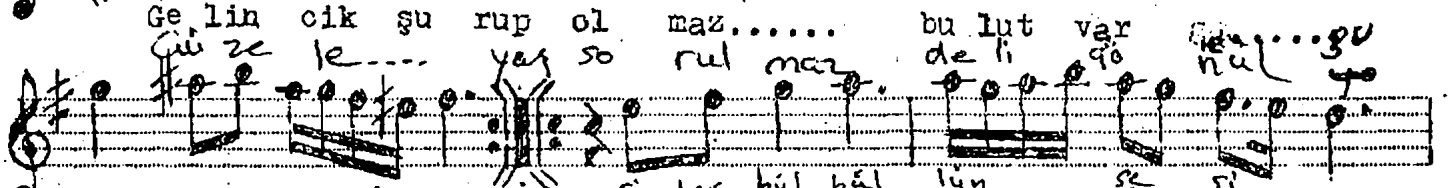
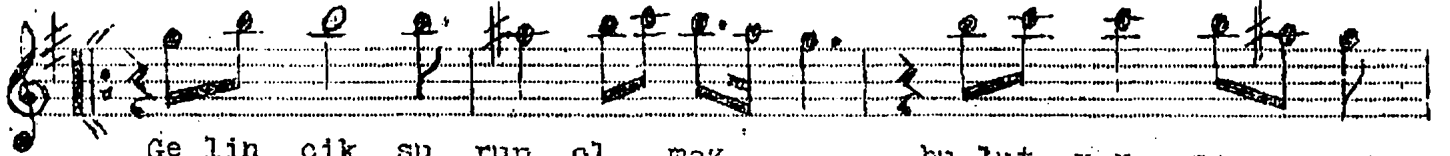
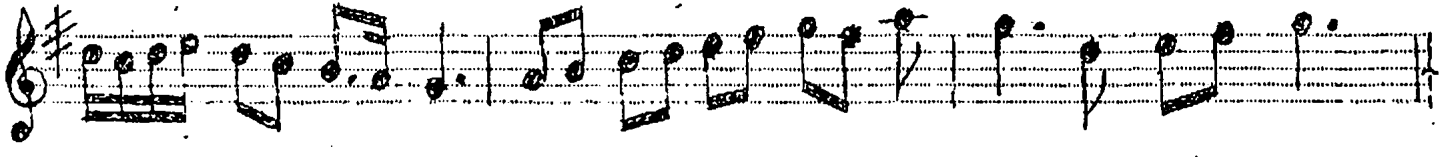
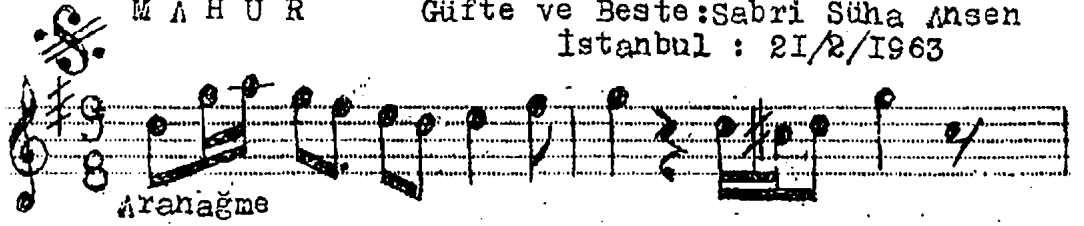


Aksak
yürükçe

M A H U R

Güfte ve Beste: Sabri Süha Ansen
İstanbul : 21/2/1963



1 Gelinoik şurup olmaz
Bulut var gurup olmaz
Dertli gönül çilesi
Ah ah artar eksilmez
Eğlenelim zevk edelim
Dünyanın kahrı çekilmez

2 Güzele yaş sorulmaz
Deli gönül yorulmaz
Çiler bülbülün sesi
Ah-ah güle dokunmaz
Eğlenelim zevk edelim
Dünyanın kahrı çekilmez