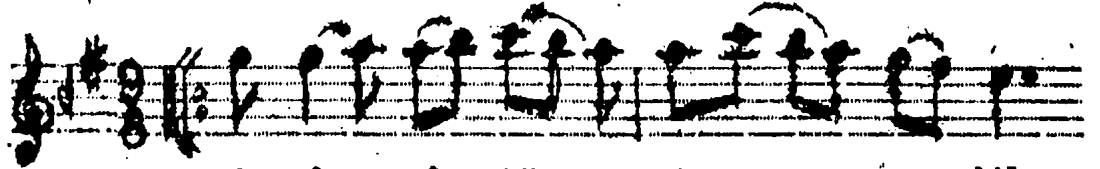


Serâpâ hüsn-ü ansın dilsitansın nâz perversin

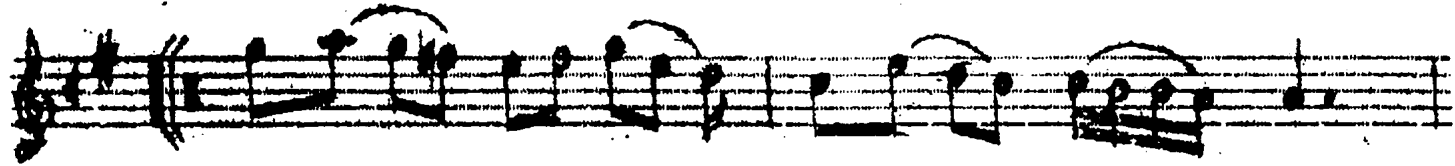
AKSAK



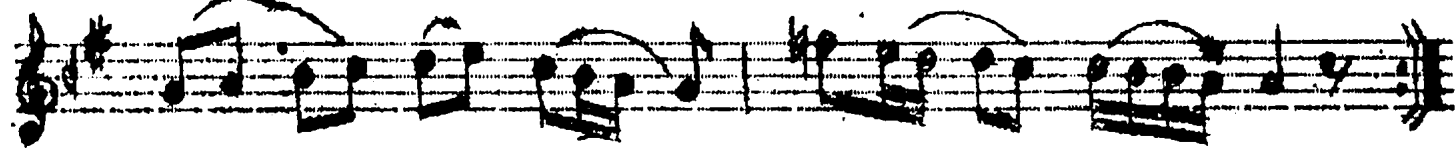
Se râ pâ hüs nt an sin dil



si tau sâ hüz per ver sin sin



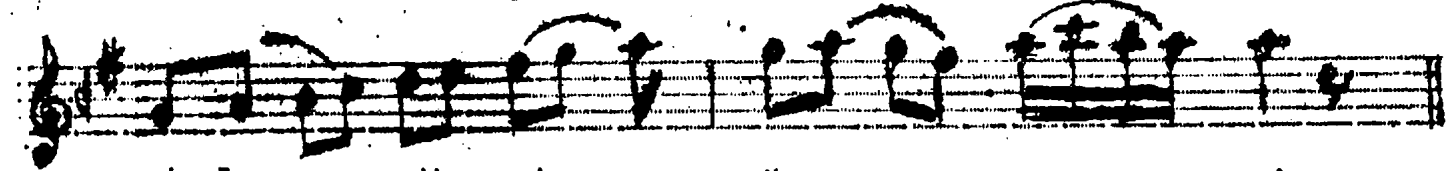
Ci vâ ni mih ri ban sâ şub



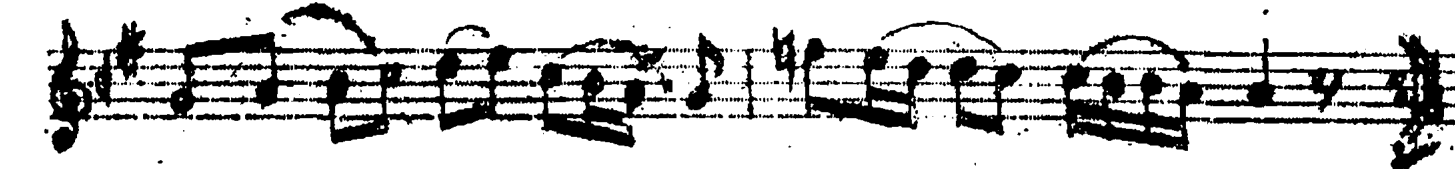
sun nâ zeu de dil ber sin



Na zi rin yok ci han da hüs



ni le mih ri mü nev ver sin

Ba hâ ol sez sa na câ her nâ
Mü cev her sin mü cev her decep pâ ki ze gev her sin
de gil ru hi mu sav ver sin

SERÂPÂ HÜSN-Ü ANSIN DİLSİTANSIN NÂZ PERVERSİN
 CİVAN-I MİHRİBANSIN ŞUHSUN NÂZENDE DİLBERSİN
 NÂZİRİN YOK CİHANDA HÜSNİLE MİHRİ MÜNEVVERSİN
 BAHÂ OLMUZ SANA CÂNA ACEP PAKİZE GEVHERSİN
 MÜCEVHERSİN MÜCEVHER DE DEĞİL RUH-I MUSAVVERSİN