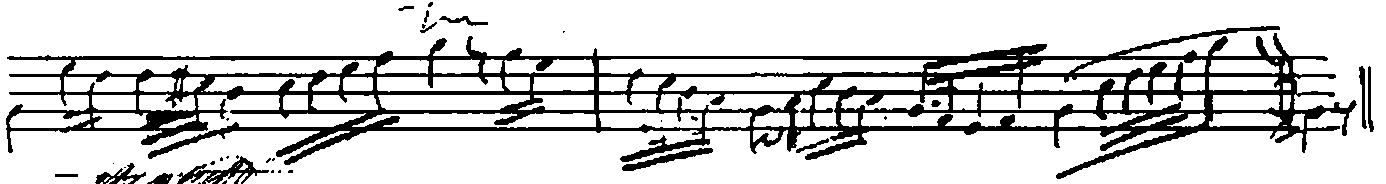


Mahur Loğremasi Tamburi Sürri Taray Beste Tarihi

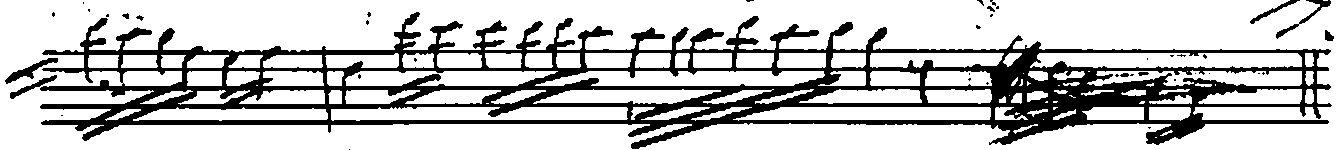
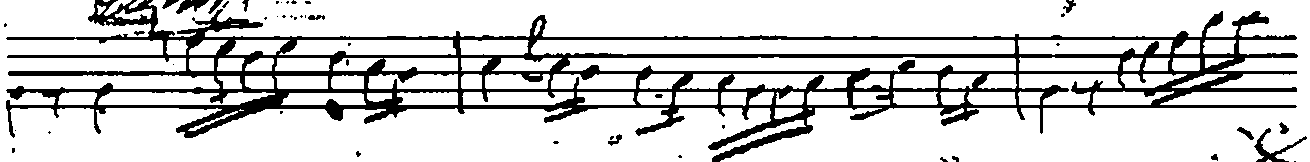
1932  
1916



Hand 1



Hand 2



Hand 3



Hand 4

Yürükler 4



Ömer Köse

Semai niy mabadi

A handwritten musical score for 'Semai niy mabadi'. The score is written on ten staves. The first staff begins with a treble clef, a key signature of one sharp (F#), and a 4/4 time signature. The music consists of a melody line and a bass line. The melody line features various note values including quarter, eighth, and sixteenth notes, along with rests and slurs. The bass line primarily uses chords, many of which are marked with a '4' above them, indicating a four-part harmony. The score concludes with a double bar line and a fermata over the final note.

J. Tuan