

MÂHÛR SAZ SEMÂÎSÎ

SÛRE: 4', 20"

♩ = 132 AKSAK SEMÂÎ

MÛZİK: KÂMURAN YARKIN

1. HANE

Musical notation for the first hane, consisting of four staves of music. The notation includes various rhythmic values, accidentals, and a fermata at the end of the fourth staff.

2. HANE

Musical notation for the second hane, consisting of two staves of music. The notation includes triplets and a fermata at the end of the second staff.

3. HANE

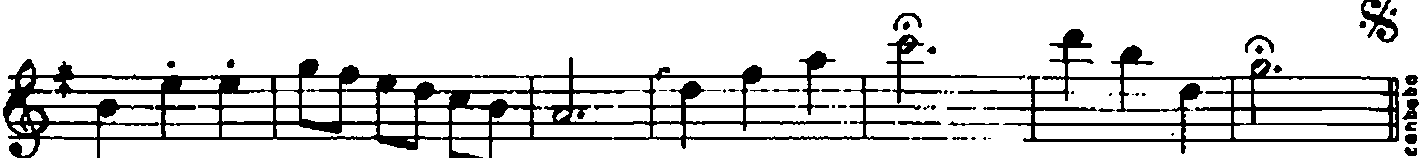
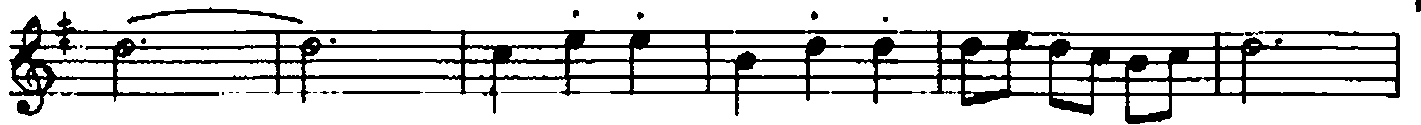
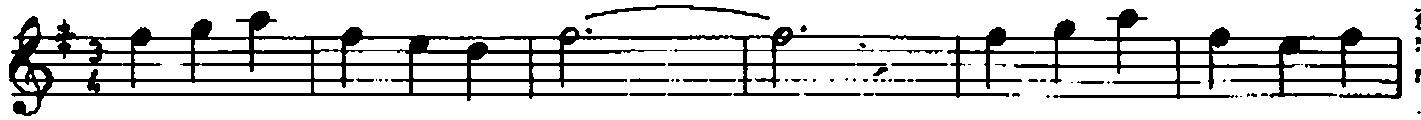
Musical notation for the third hane, consisting of two staves of music. The notation includes triplets and a fermata at the end of the second staff.

♩ = 335 4. HANE DEVR-İ TURAN

Musical notation for the fourth hane, consisting of two staves of music. The notation includes various rhythmic values and accidentals.



♩ = 192 SEMÂİ



AĞIRLAŞACAK



cenbebo