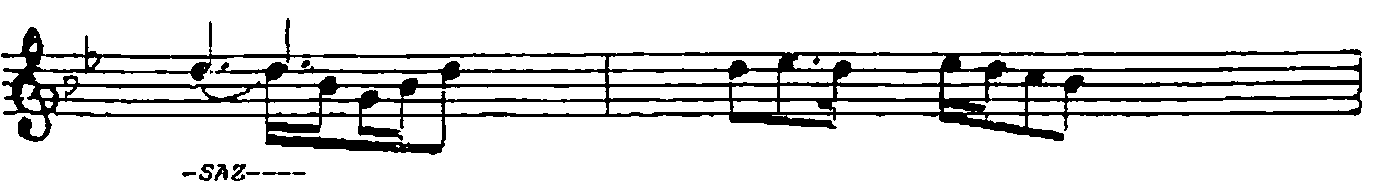
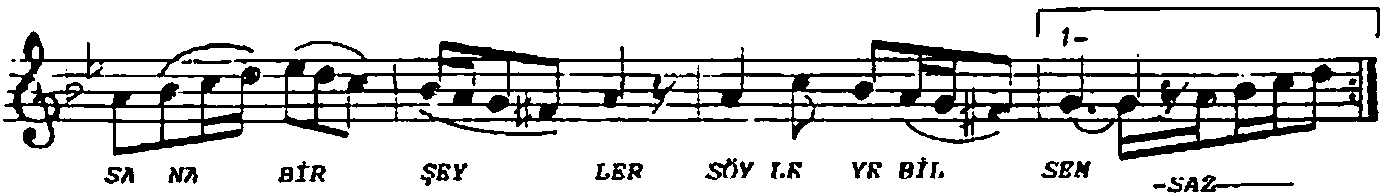
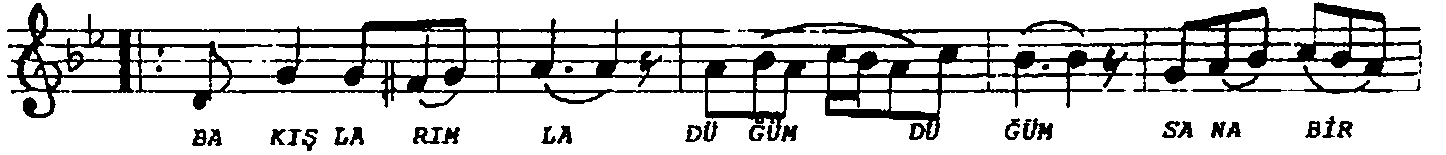
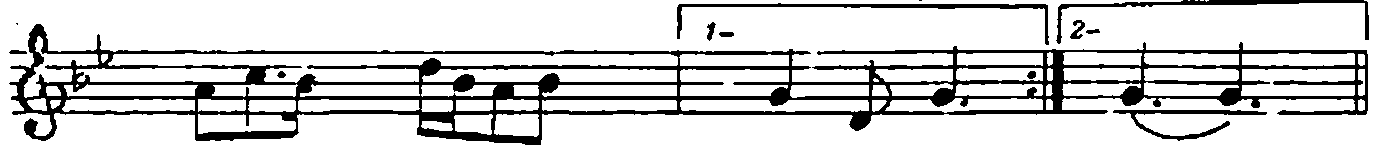
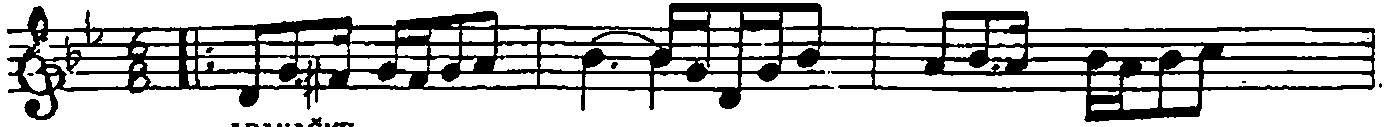


♩ = 132

NİHAVEND ŞARKI
-BAKIŞLARINLA DÜĞÜN DÜĞÜN-

MÜZİK: EROL BAŞARA
SÖZ : FEYZİ HALICI

USÛLÜ: YÜRÜK SEMÂİ



-SAZ-
HA Nİ NE Bİ LE YİM MA SAL GI Bİ
ŞAV KI YAN ÇI ÇEK Lİ BİR DAL GI Bİ
BİR O KUN MA MIŞ AR ZU HAL GI Bİ
SA NA BİR ŞEY LER
SÖY LE YE BİL SEM -SAZ- SEM

BAKIŞLARIMLA DÜĞÜN DÜĞÜM
SANA BİR ŞEYLER SÖYLEYEBİLSEM
SABAHLARA KADAR DÜŞÜNDÜĞÜM
SANA BİRŞYLER SÖYLEYEBİLSEM
HANİ NE BİLEYİM MASAL GİBİ
ŞAVKIYAN ÇİÇEKLİ BİR DAL GİBİ
BİR OKUNMAMIŞ ARZUHAL GİBİ
SANA BİRŞEYLER SÖYLEYEBİLSEM