

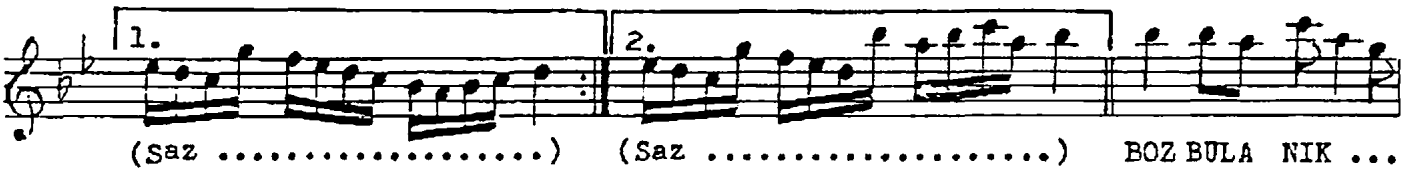
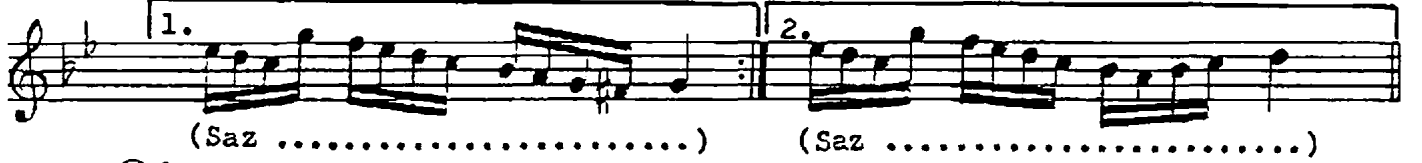
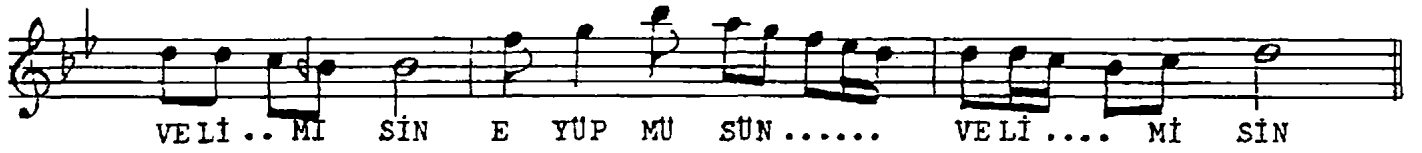
NİHAVEND ŞARKI

Müzik: Kâsım İNALTEKİN
Söz: Fuat TOLGA

DÜYEK

(Aşkın cevrimni çekmeye Eyüp müsün Veli misin)

(♩ = 132)



AŞKIN CEVRİNİ ÇEKMEYE EYÜP MÜSÜN VELİ MİSİN ?
OTUR KÖŞENDE EY GÖNLÜM DİVANE Mİ DELİ MİSİN?
BOZ BULANIK AKIYORSUN YOKSA BAHAR SELİ MİSİN?
(Fuat TOLGA)