

NIHÂVEND ŞARKI

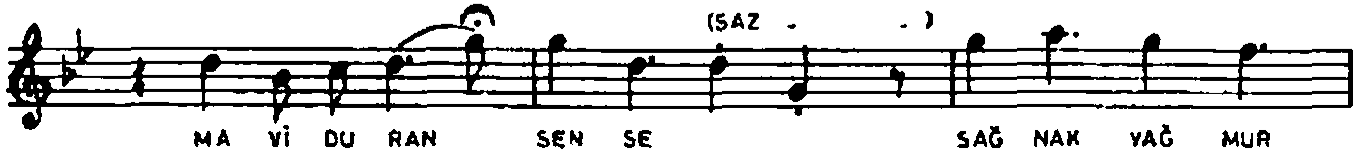
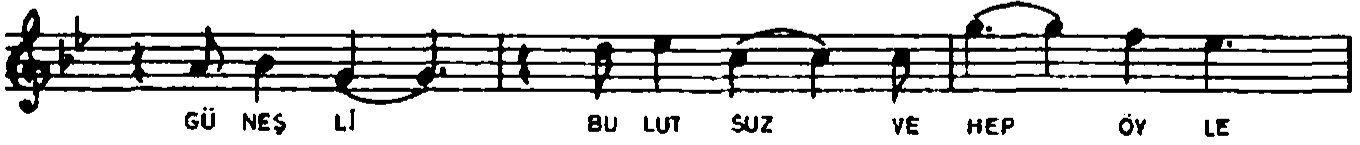
BEN SENİ İLKBAHAR GÖKLERİ GİBİ İSTERİM

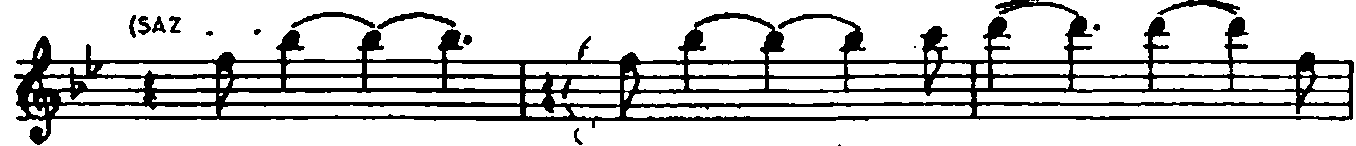
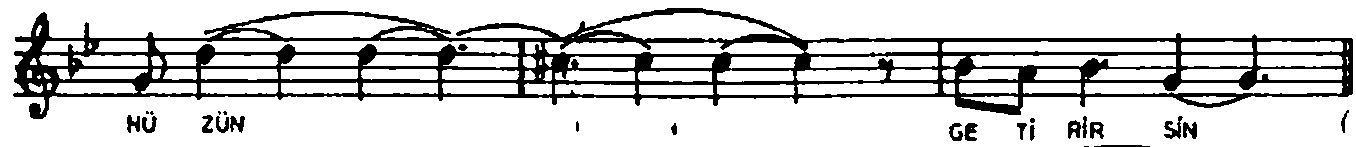
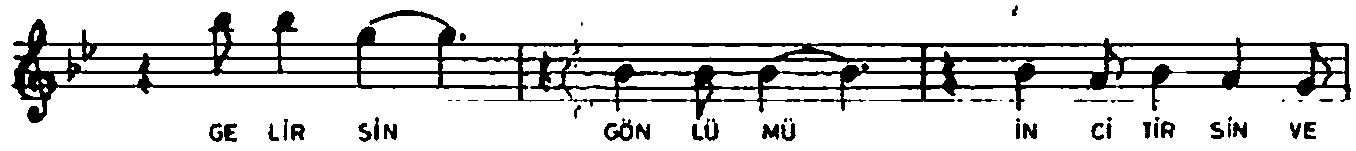
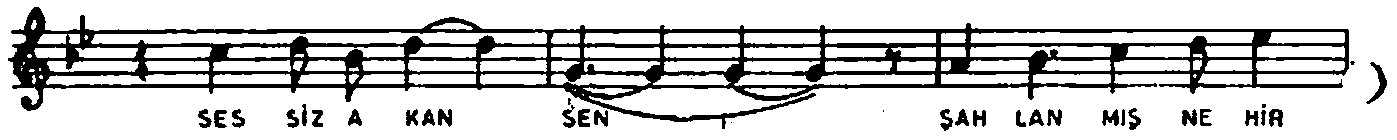
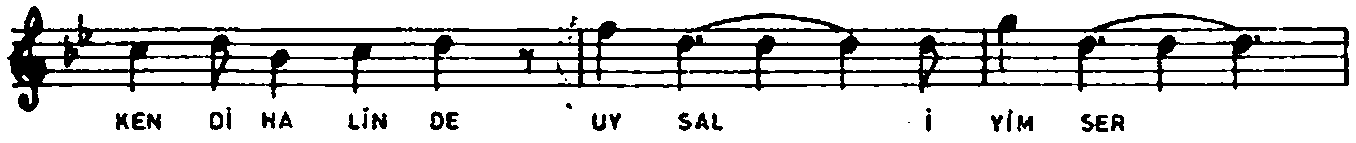
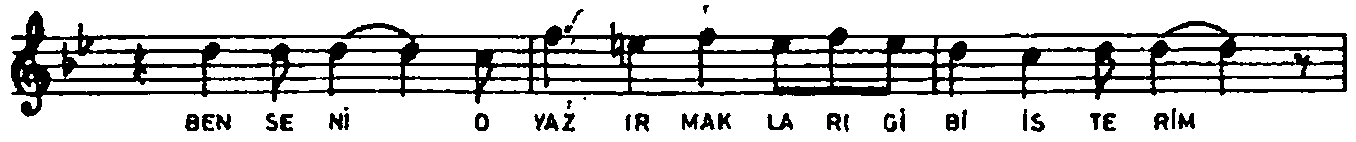
USÛLÜ: CURCUNA

♩.200

MÜZİK: SELAHATTİN İÇLİ

SÖZ: SAHİN ÇANDIR





12452

SÜT Lİ MAN SEN OK YA NUS LAR GI
Bİ DAĞ BO YU KÖ PÜK KÖ PÜK DAL GA LAR LA
GE LİR SİN GÖN LÜ MÜ İN Cİ TİR SİN VE
HÜ ZÜN GE Tİ RİR SİN

y.cavga

NOT: KONUŞUR GİBİ İCRASI TERCİH OLUNUR.

BEN SENİ İLKBAHAR GÖKLERİ GİBİ İSTERİM
GÜNEŞLİ, BULUTSUZ VE HEP ÖYLE MAVİ DURAN
SENSE, SAĞNAK YAĞMURLAR GİBİ SİSLİ KARANLIK
ÖFKELERLE GELİRSİN
GÖNLÜMÜ İNCİTİRSİN VE HÜZÜN GETİRİRSİN

BEN SENİ O YAZ IRMAKLARI GİBİ İSTERİM
KENDİ HALİNDE UYSAL, İYİMSER, SESSİZ AKAN
SEN, ŞAHLANMIŞ NEHİRLER GİBİ COŞKUN, GÖZÜ PEK
TAŞKINLARLA GELİRSİN
GÖNLÜMÜ İNCİTİRSİN VE HÜZÜN GETİRİRSİN

BEN SENİ EYLÜL DENİZLERİ GİBİ İSTERİM
KUYTU BİR KOYA ŞÖYLE UZANMIŞÇA SÜT LİMAN
SEN, OKYANUSLAR GİBİ DAĞ BOYU KÖPÜK KÖPÜK
DALGALARLA GELİRSİN
GÖNLÜMÜ İNCİTİRSİN VE HÜZÜN GETİRİRSİN

