

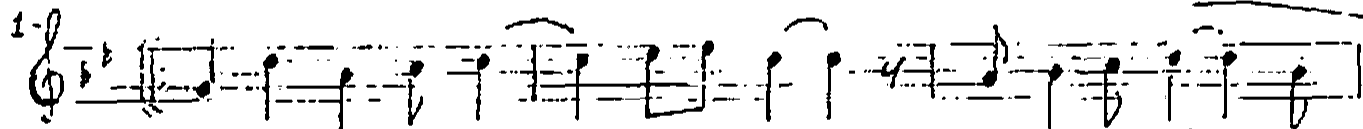
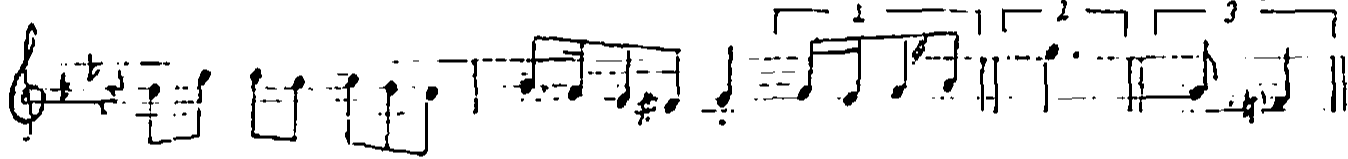
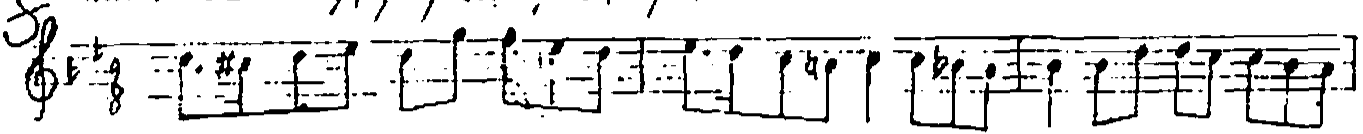
NIHAVEND

Musik: AKIN ÖZKAN

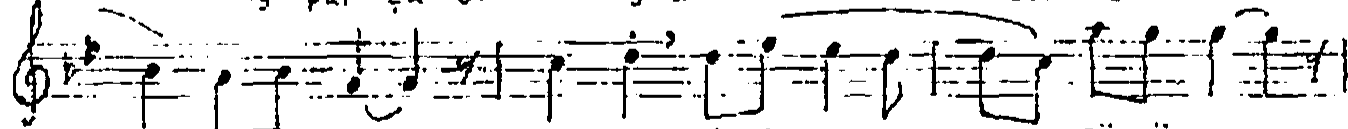
Aksak 2/4

Ay parçası Yüzlük

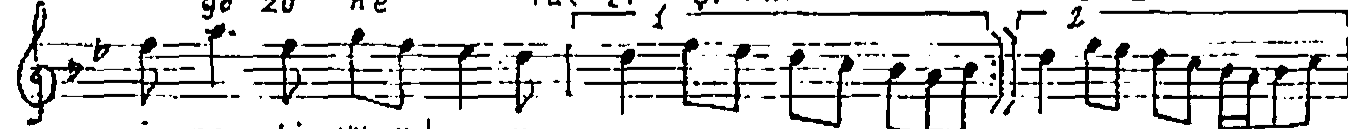
Söz: Sami Derintuna



- Ay par ç a sı yü zü ne o sür me Li



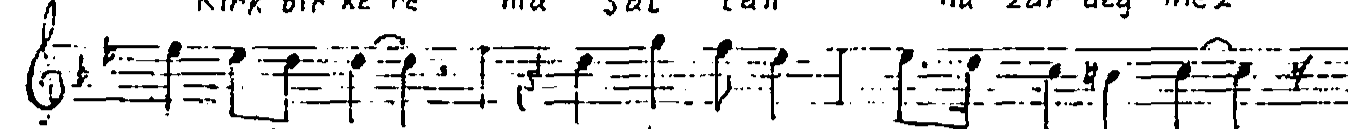
gö zü ne tat lı ş i rin sö zü ne



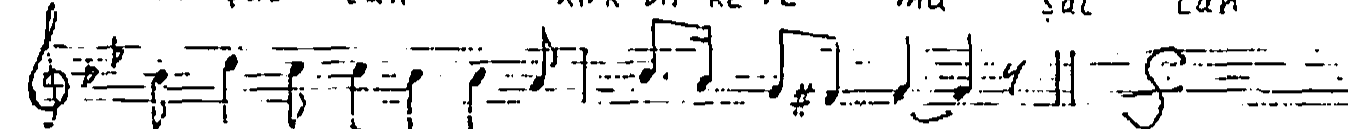
i nan ki vu rul mu ş um ( - - saz - - - ş um ( - - saz - -



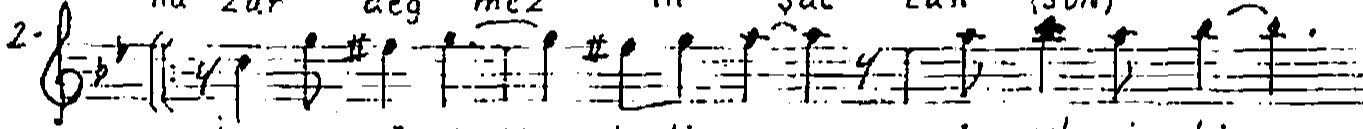
- Kır k bir ke re ma ş al Lah na zar değ mez



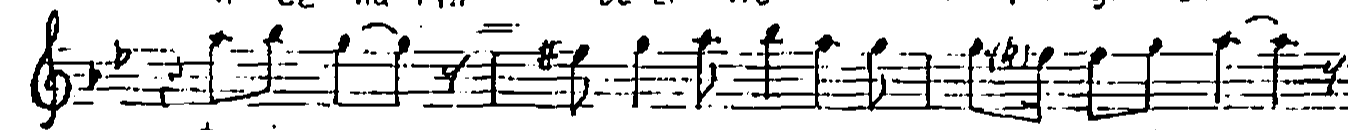
in ş al Lah kır k bir ke re ma ş al Lah



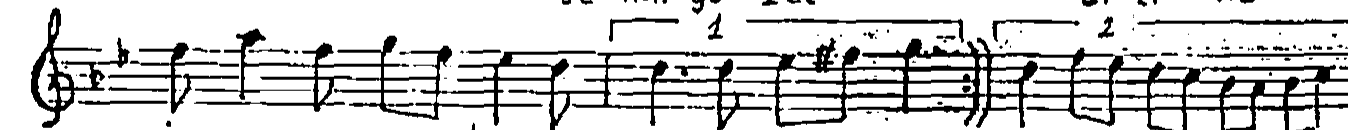
na zar değ mez in ş al Lah (son)



in ce nā rin - be li ne i pek gi bi



te ni ne se nin gü zel di li -ne



i nan ki vu rul mu ş um ( - - saz - - ) ş um ( - - saz - - )

Ya na gi nin a li na du da gi nin  
ba li na Tan rim böy le ku lu na  
i nan ki vu rul mu şum ( - - ş a 2 - - ) şum ( - - ş a 2 - - )

22.7.1993

1

Ay parçası yüziine  
O sızıneli gözüne  
Tatlı, şirin söziine  
İnan ki vurulmuşum

Kurt bir here mäsalleh  
Nayar değmez insalleh

2

İnce, narin beline  
İpek gibi tenine  
Şirin güzel diline  
İnan ki vurulmuşum

(Nakarat)

3

Yanağın alına  
Dudagın bahına  
Tavrim böyle kuluna  
İnan ki vurulmuşum

(Nakarat)