

NIHAVEND
AKSAK

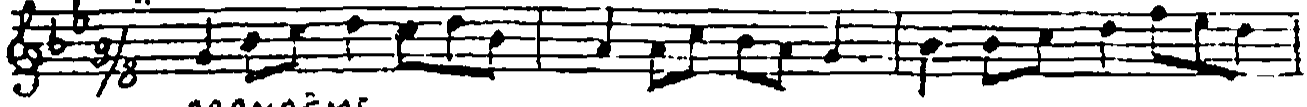
NIHAVEND ŞARKI

MÜZİK : ERDEM AUCU

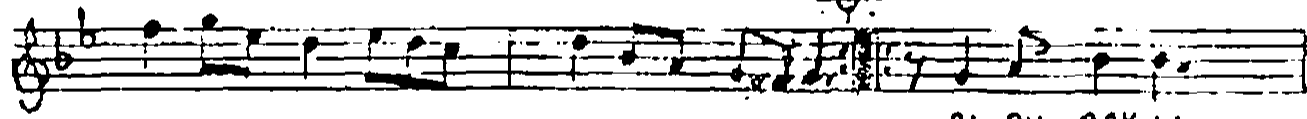
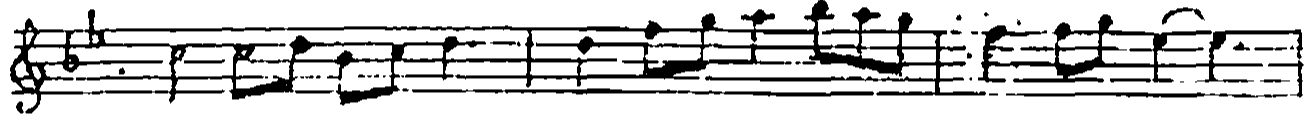
♩ : 2 3 4

AL DUDAKLI BAHAR GÖZLÜ

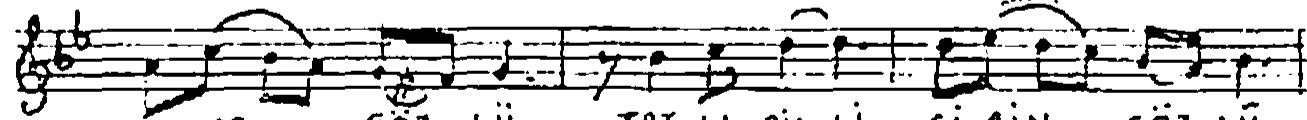
SÖZ. : CELAL ÇETİN



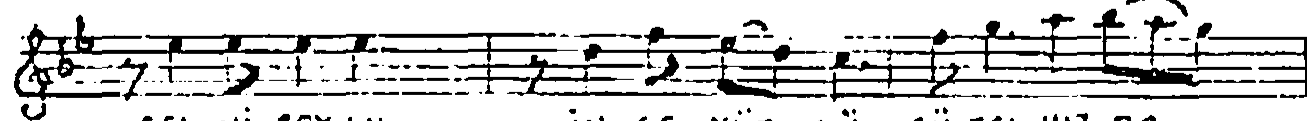
ARANAĞME



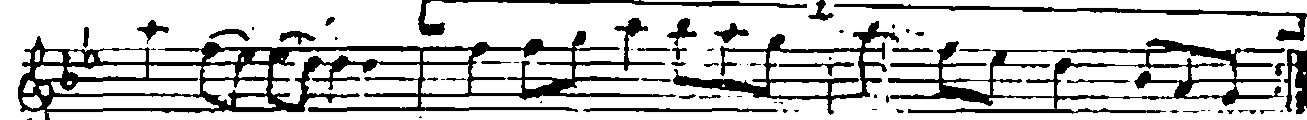
AL DU DAK LI



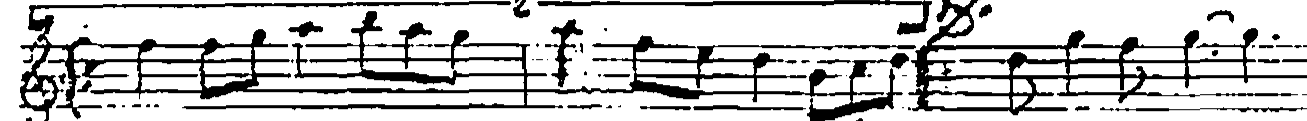
BA HAR GÖZ LÜ TAT LI DİL LI Şİ RİN SÖZ LÜ



SEL Vİ BOY LU İN CE YÜZ LÜ GÜ ZEL KIZ DA..



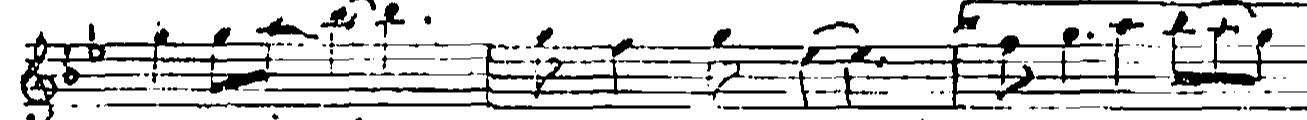
GÖNLÜM KAL DI SÖZ



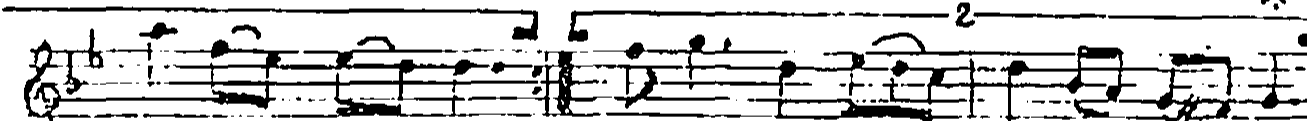
SÖZ SU LAR GI Bİ



HEP ÇAĞ LA YAN YA RE LE Rİ HEP SİZ LA YAN

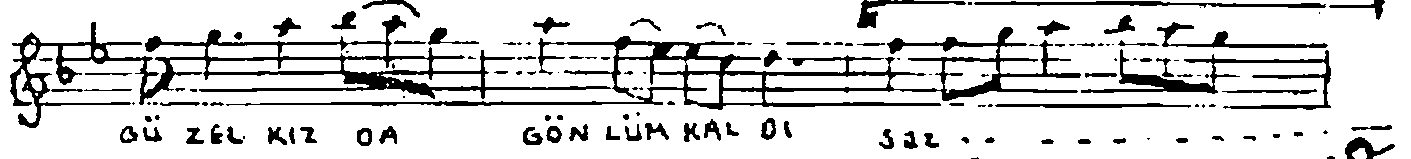
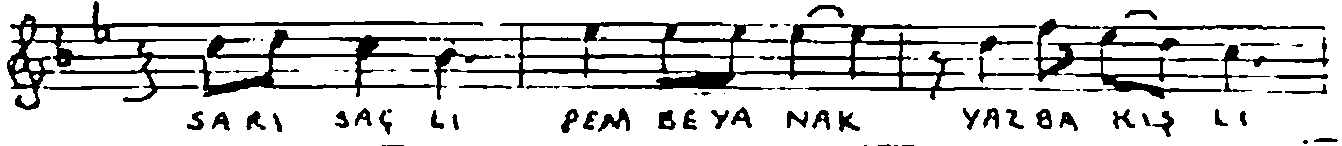


AŞ RI İ ÇİN ÇOK AG LA YAN GÜ ZEL KIZ DA



GÖN LÜM KAL DI GÜ ZEL KIZ DA GÖN LÜM KAL DI

MÜZİK : ERDEM AUCU
SÖZ. : CELÂL ÇETİN



TATLI DİLLİ ŞİKİN SÜZÜ
SELVİ BOYLU İNCE YÜZLÜ
GÜZEL KIZDA GÖNLÜM KALDI."

SULAR GİBİ HEP ÇAĞLAYAN
YARELERİ HEP SIZLAYAN
AŞKI İÇİN ÇOK AĞLAYAN
GÜZEL KIZDA GÖNLÜM KALDI.

ZARİF PARLAK KE MAN KAŞ LI
NARİN ENDAM SARI SAÇ LI
PENBE YANAK YAZ BAKIŞ LI
GÜZEL KIZDA GÖNLÜM KALDI.