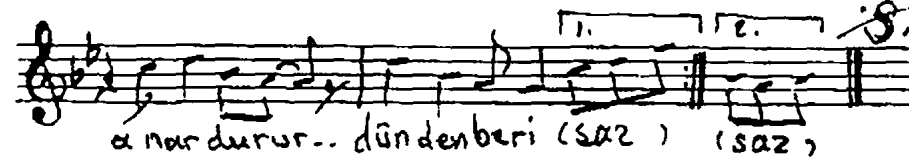
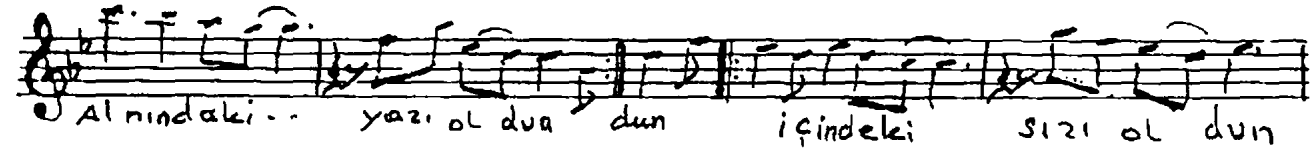
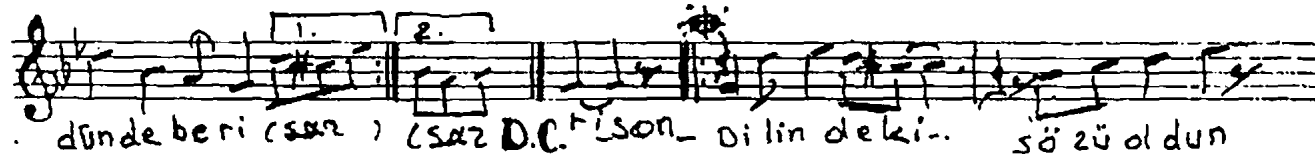
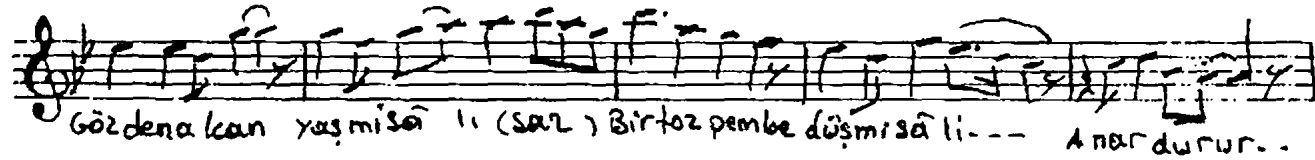
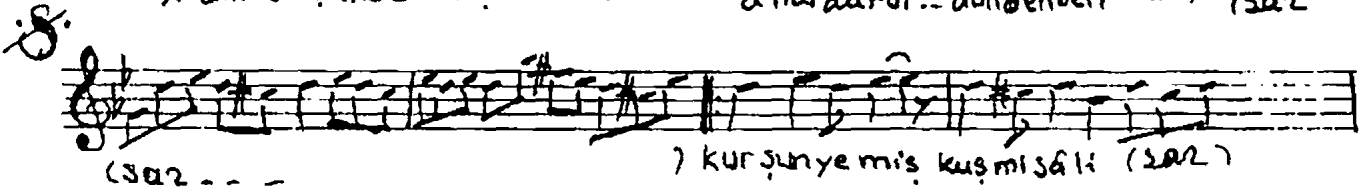
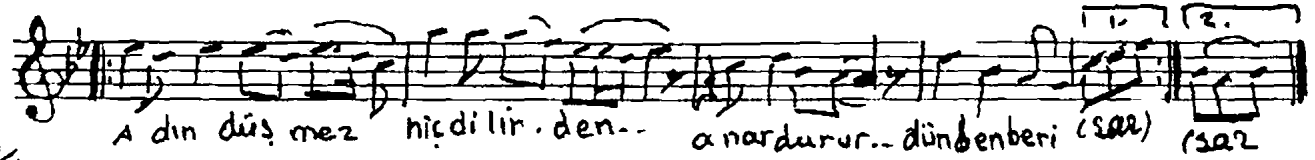
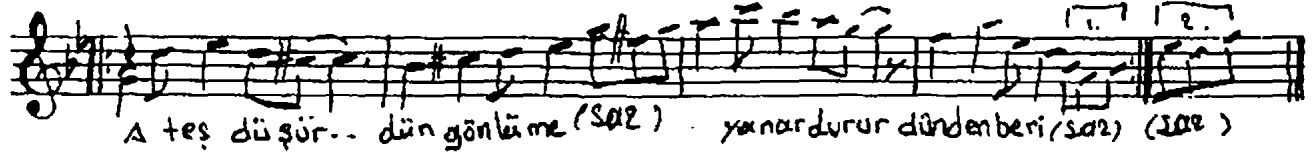
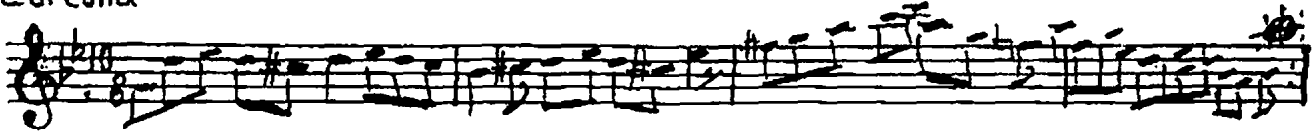


- NİHAVEND ŞARKI -
ATEŞ DÜŞÜRDÜN GÖNLÜME

MÜZİK: BİLGE ÖZGEN
SÖZ: SADIK ATAY

Curcuna



Ateş düşürdün gönlüme
Yanar durur dünden beri
Adın düşmez hiç dilinden
Anar durur dünden beri

Kurşun yemiş kuş misâli
Gözden akan yaş misâli
Birtöz pembe düş misâli
Anar durur dünden beri

Dilindeki sözü oldun
Alnındaki yazı oldu
İçindeki sızı oldu
Anar durur dünden beri

Sadık Atay