

SÜRE :

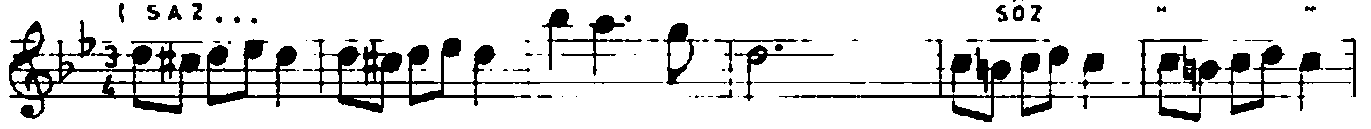
# NIHÂVEND FANTEZİ

(ALEV Mİ SÖYLE NEDİR BENİ BÖYLESİ YAKAN)

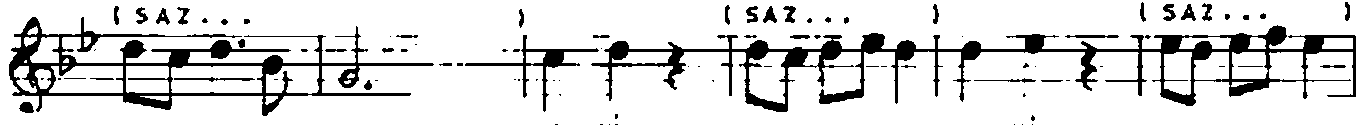
♩ = 120

SEMÂÎ

MÜZİK ABDÜLKADİR GÖRMEN  
SÖZ



A. LEV. Mİ SÖY. LE NE. DİR



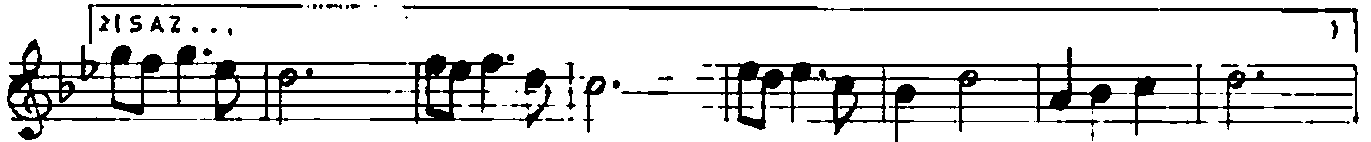
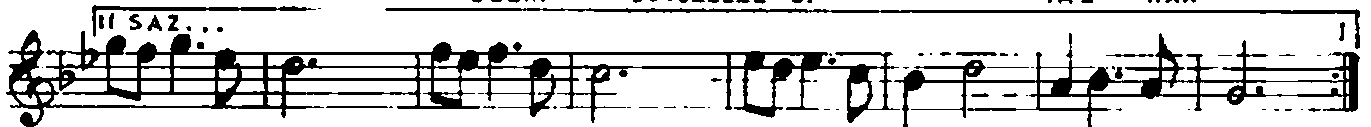
BE. Nİ BE. Nİ



BE. Nİ BÖY. LE. Sİ YA. KAN

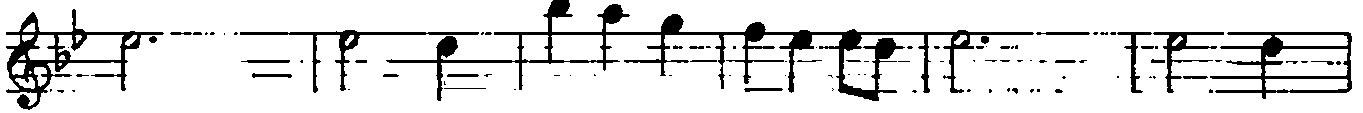


BE. Nİ BÖY. LE. LE Sİ YA. KAN

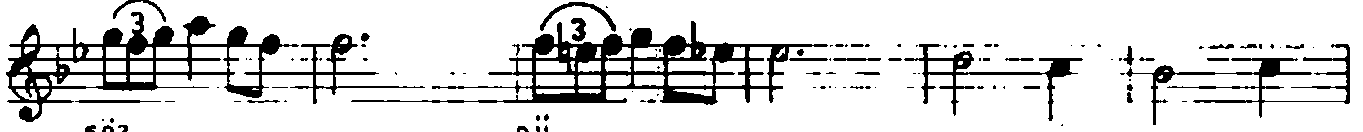


QY. SA. Kİ BİR ÇİFT. Sİ

( SAZ... )



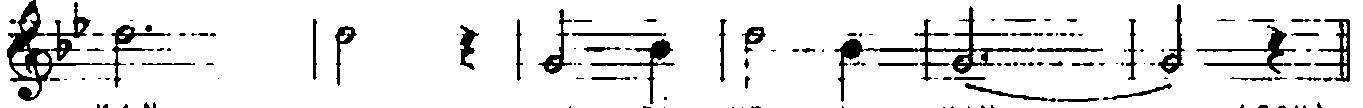
YAH



GÖZ -

DÜ

KAL - BI - ME A

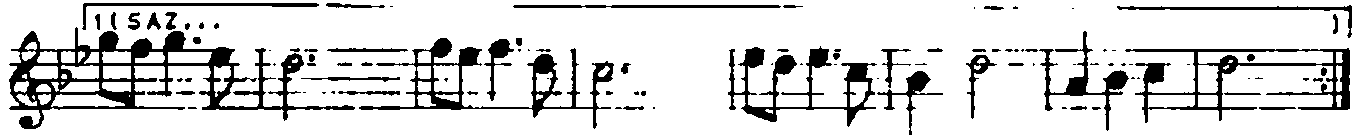


KAN

KAL - BI - ME A

KAN

(SON)



1 (SAZ...)

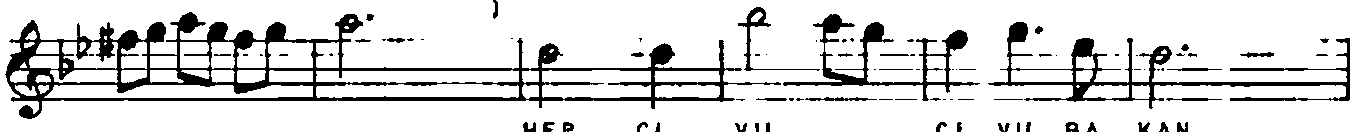


2 (SAZ...)



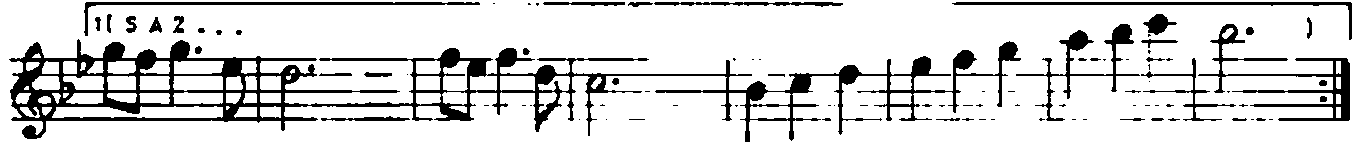
HER ZAL - MAN

NEŞ - E DO - LU

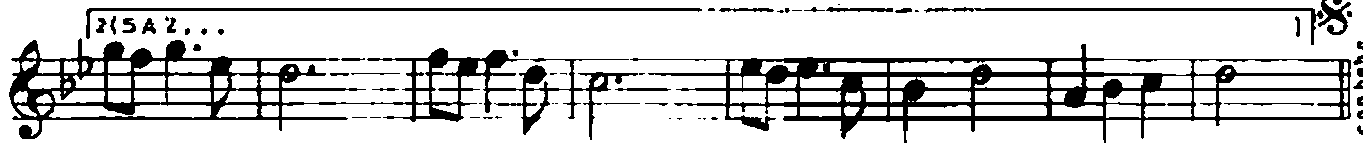


HEP - Cİ - VİL

Cİ - VİL BA - KAN



1 (SAZ...)



2 (SAZ...)

ALEV Mİ SÖYLE NEDİR BENİ BÖYLESİ YAKAN,  
OYSA Kİ BİR ÇİFT SİYAH GÖZDÜ KALBİME AKAN  
HER ZAMAN NEŞ'E DOLU HEP CİVİL CİVİL BAKAN,  
SİMSİYAH GÖZLERİNDİ O GÜN KALBİME AKAN.

ABDULKADIR GÖKMEN

ANKARA 1979