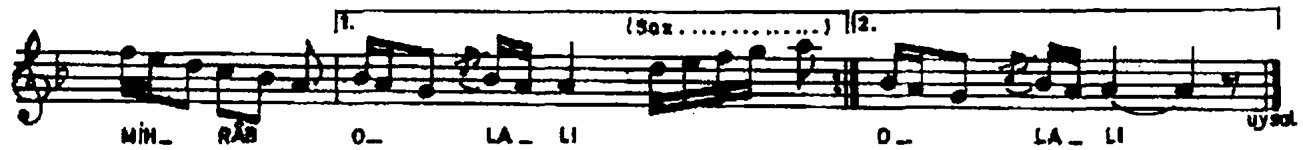
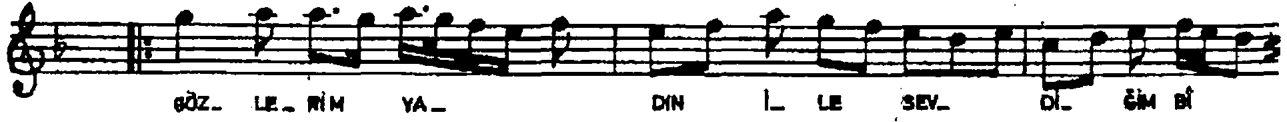
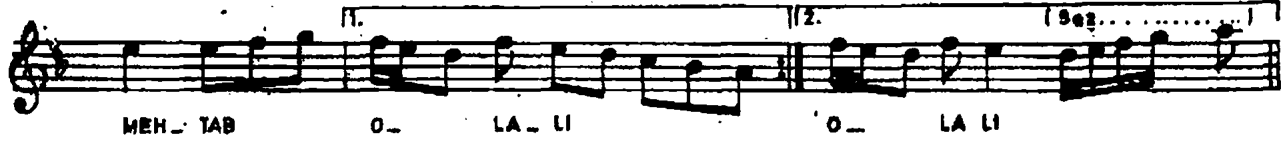


MUHAYYERKÜRDİ ŞARKI

MÜSEMME

(GELMEDİN BİR GECECİK BAĞIMA MEHTAB OLALI)

NEBİ LOĞLU
İSMAIL HAKKI BEY



GELMEDİN BİR GECECİK BAĞIMA MEHTAB OLALI
GÖZLERİN YADIN İLE SEYDİĞİN BİHAB OLALI
HANGİ MİHRABA BAKIP SECDEYE VARSAM BİLEMEM
KAŞLARIN BAŞKASININ AŞKINA MİHRAB OLALI.