

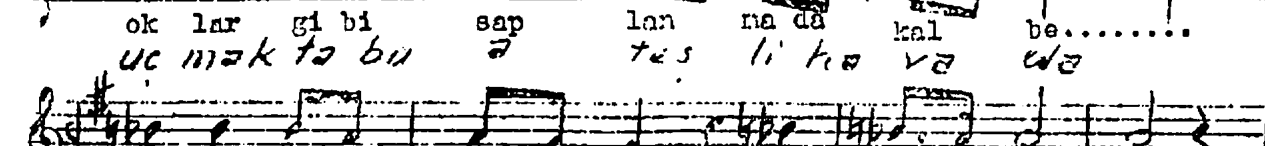
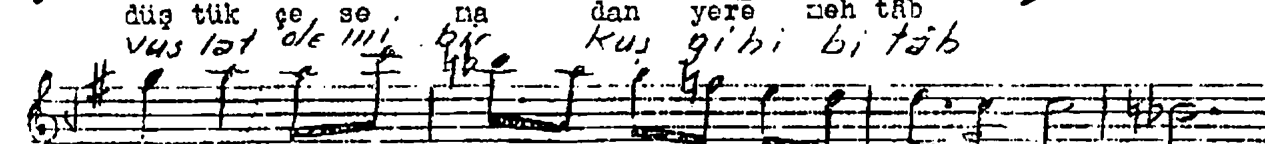
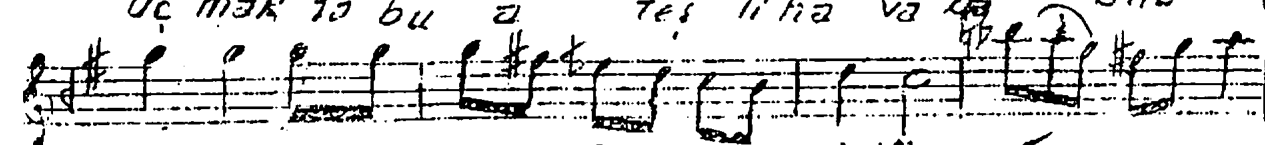
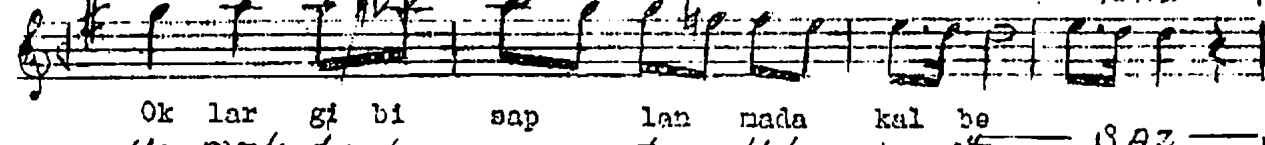
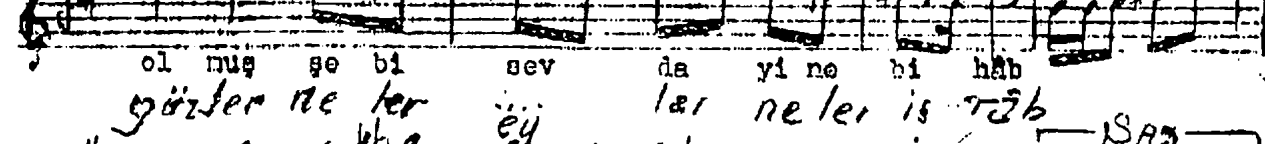
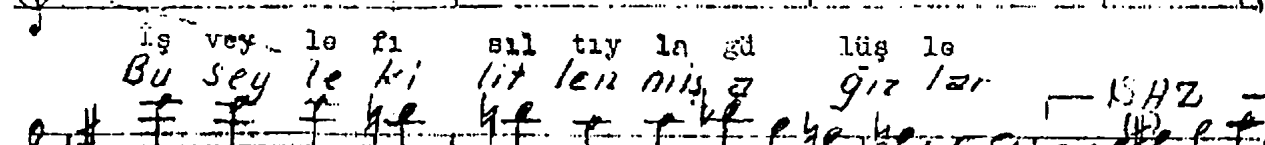
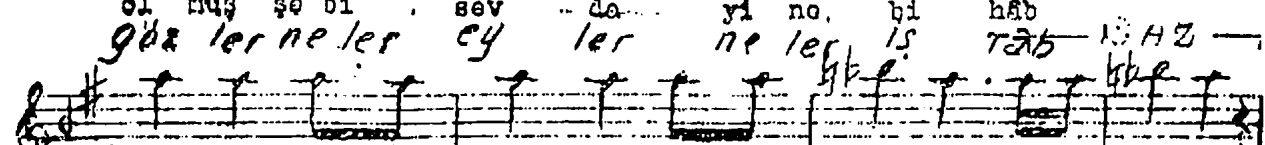
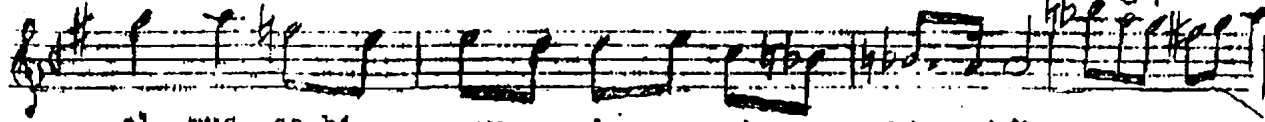
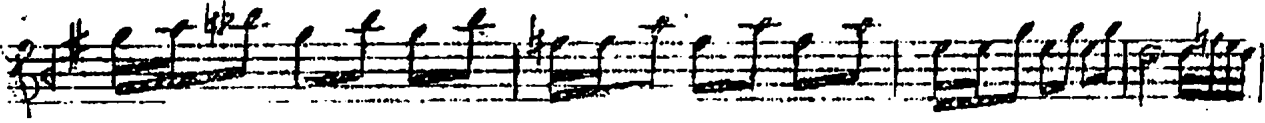
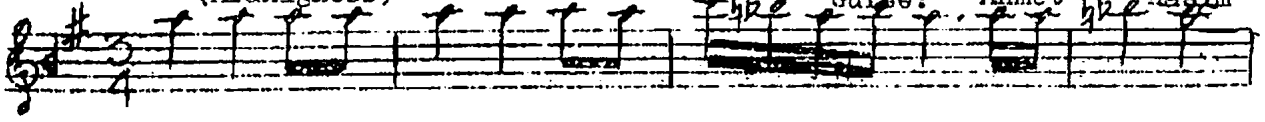
Semâi

(Aranağmesi)

MUHAYYER KÜRDİ ŞARKI

Beste: Dr. Selahaddin İçli

Güfte: Ahmet Hasim



İş veyle fıslıtyla gülüşle
Olmuş şeb-i sevda yine bihâb
Oklar gibi saplanmada kal

Buseyle kilitlenmiş ağızlar
Gözler neler evler neler işâb