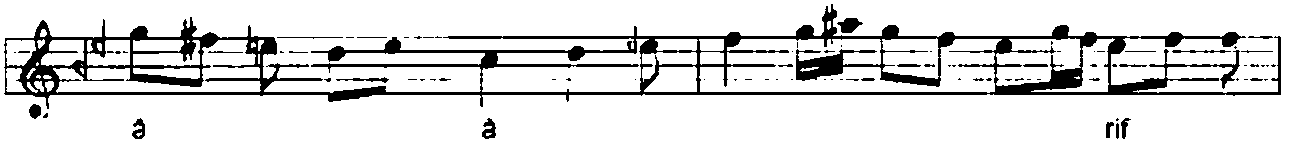
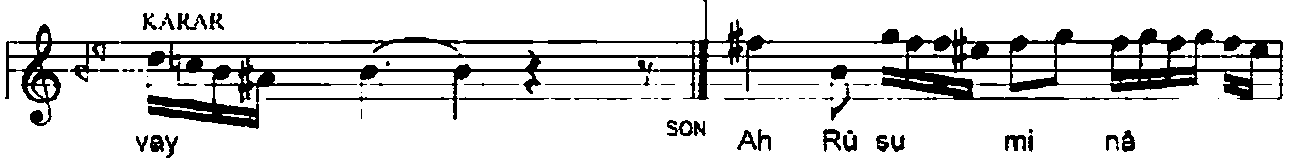
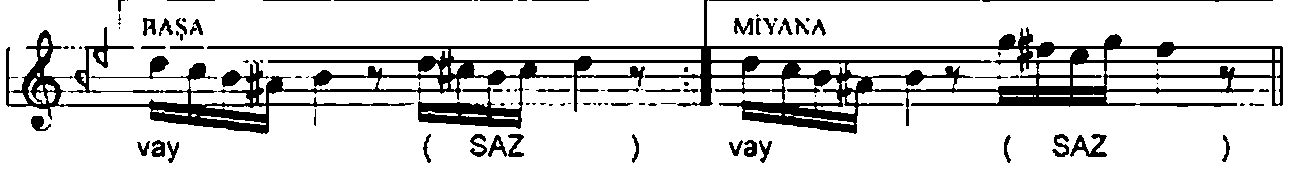
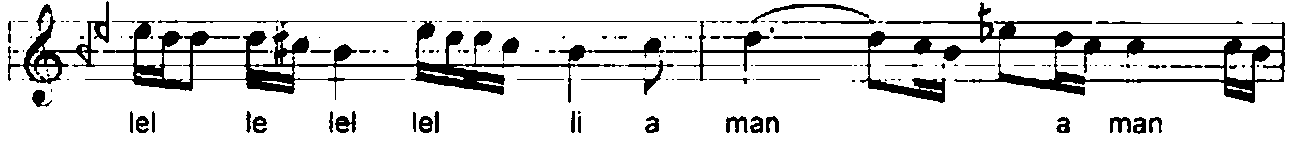
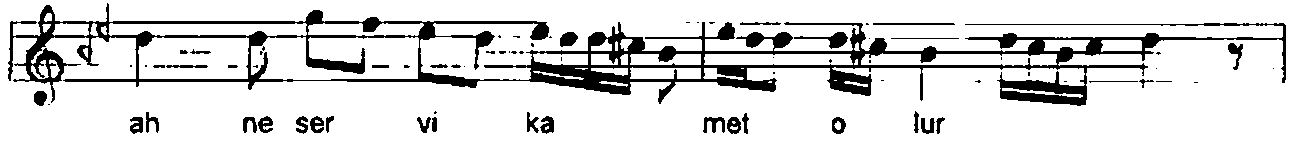
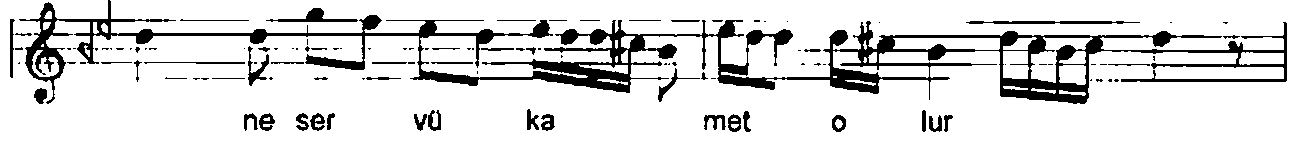
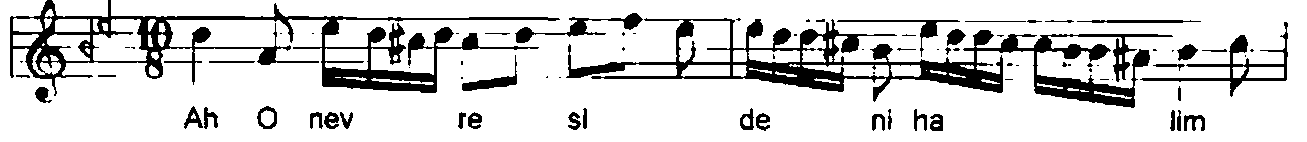


MÜSTEAR AĞIR SEMÂÎ

O nevreside nihâlim ne serv-ü kâmet olur

USÛL: AKSAK SEMAÎ

BESTE: EYYÛBÎ EBUBEKİR AĞA



ah â rif be li be li ye lel le

lel le lel ye lel le lel le lel lel li a

man a man ez ber le miş

â rif (SAZ)

Ah O dil ru bâ yı go rür sün

ka ti kı ya met o lur

ah ka ni kı ya met o lur

be li be li ye lel le lel le lel ye lel le

lel le lel lel li a man a man

ah ka ti kı ya met o lur vay

O nevrside nihâlim ne serv-ü kâmet olur
 Benim hayâl-i dilim meşrebimce âfet olur
 Rûsûm-u nâzî tamam ezber eylemiş ârif
 O dilrubâyı görürsün kani kıyamet olur