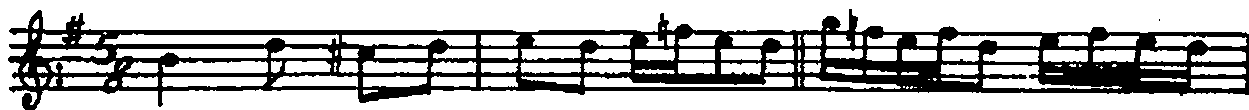


# SAZ SEMAISI

FENNI B.

1 oi HANE

Müstere



4 OÜ HANE

The first section of the music consists of four staves. The first staff begins with a treble clef, a key signature of one sharp (F#), and a 4/4 time signature. The melody is composed of eighth and quarter notes, with some notes beamed together. The second and third staves continue the melodic line, featuring various rhythmic patterns and some notes with slurs. The fourth staff concludes the section with a double bar line.

VALS

The second section of the music, labeled 'VALS', consists of five staves. The first staff begins with a treble clef, a key signature of one sharp (F#), and a 3/4 time signature. The melody is characterized by a waltz-like feel with a mix of eighth and quarter notes. The second and third staves continue the melodic line, with some notes beamed together. The fourth and fifth staves conclude the section with a double bar line. The fifth staff has a small decorative flourish at the end.