

NEVESER PEŞREV

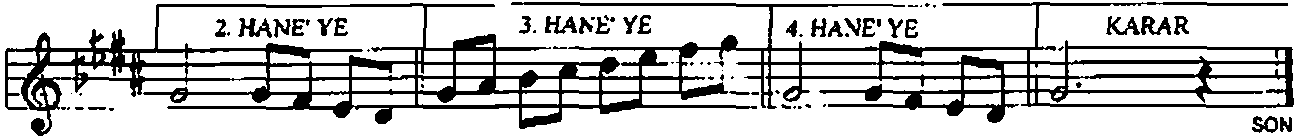
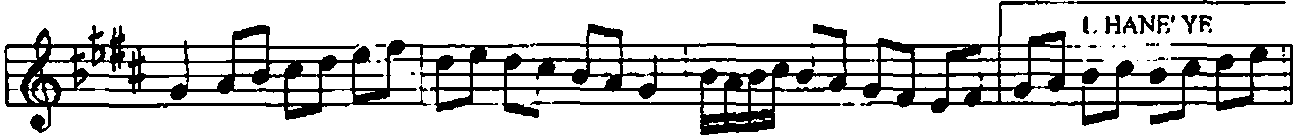
USÛL: BEREFŞAN

BESTE: TANBURI NUMAN AĞA

Birinci Hane



Mülâzime 



İkinci Hane



Uçuncü Hane

The first staff of the 'Uçuncü Hane' section contains a single line of music. It begins with a treble clef, a key signature of one flat and one sharp (B-flat and F-sharp), and a 4/4 time signature. The melody consists of a series of eighth and sixteenth notes, with several flats (B-flat, E-flat, A-flat) placed above the notes. The staff concludes with a double bar line and a repeat sign.

Dördüncü Hane

The first staff of the 'Dördüncü Hane' section contains a single line of music. It begins with a treble clef, a key signature of one flat and one sharp (B-flat and F-sharp), and a 4/4 time signature. The melody consists of a series of eighth and sixteenth notes, with several flats (B-flat, E-flat, A-flat) placed above the notes. The staff concludes with a double bar line and a repeat sign.