

Neveser Saz Semâisi

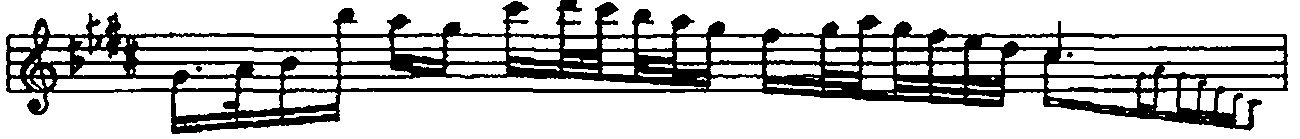
Aksak semâi

Necdet Yaşar

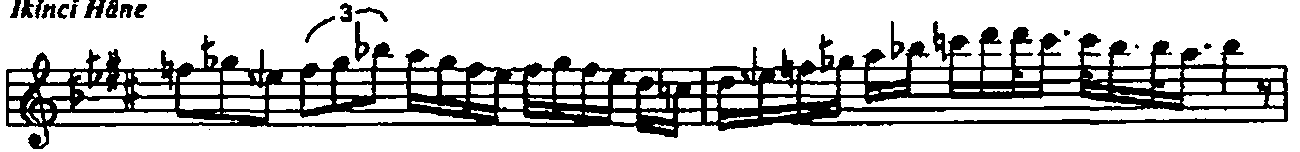
Birinci Hâne



Mulâzime %



İkinci Hâne



Neveser Lazsem. (2)

N. Yaşar

Oçuncü Hâne



Musical notation for the first section, Oçuncü Hâne. It consists of two staves of music in a treble clef, key signature of one sharp (F#), and 2/4 time signature. The first staff contains a series of eighth and sixteenth notes. The second staff continues the melody with several triplet markings (indicated by a '3' above the notes) and ends with a double bar line and a repeat sign (§).

Dördüncü Hâne



Musical notation for the second section, Dördüncü Hâne. It consists of eight staves of music in a treble clef, key signature of one sharp (F#), and 2/4 time signature. The first staff is labeled 'Sengin Semâî' and contains a series of eighth and sixteenth notes. The subsequent staves feature complex rhythmic patterns with numerous triplet markings (indicated by a '3' above the notes). The section concludes with a double bar line and a repeat sign (§).

rit..