

USÛLU SEMAÎ

SÛRE = 4'

♩ = 168

NIHÂVEND ŞARKI

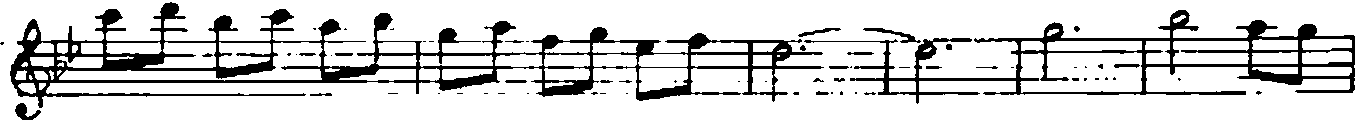
(SÖYLEYENLE SÖYLEYEN DİL, HEPSİ BİR)

SÖZ : ABBAS DEMİRTAS

MÜZİK AVNİ ANIL



Aranağme ...



SOY LE TEN LE SÖY LE YEN DİL HEP Sİ BİR



(Saz) LEY LÂ SİY LA MEC NU NUV



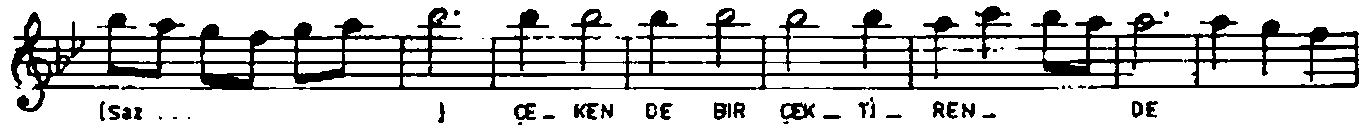
LA HEP Sİ BİR (Saz) LEY LÂ SİY LA MEC NU



NUV LA HEP Sİ BİR (Saz)



ÇE KEN DE BİR ÇEK Tİ REN DE HEP Sİ BİR



(Saz) ÇE KEN DE BİR ÇEK Tİ REN DE



HEP Sİ BİR (Saz) BİR OL MA SA NE O

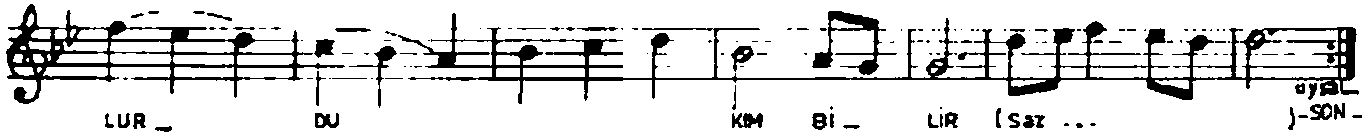
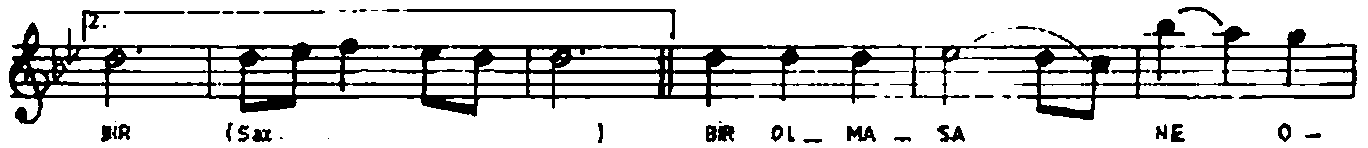
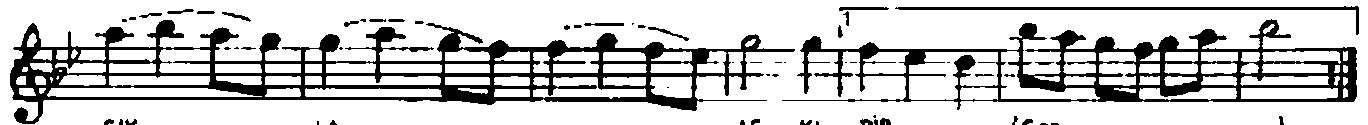
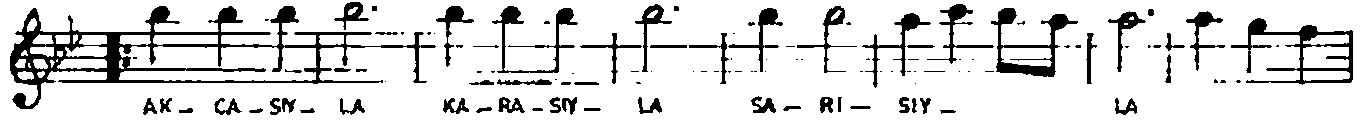
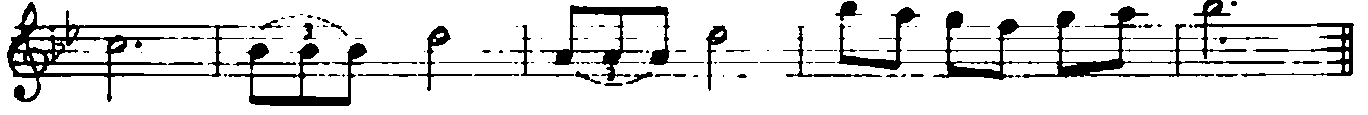
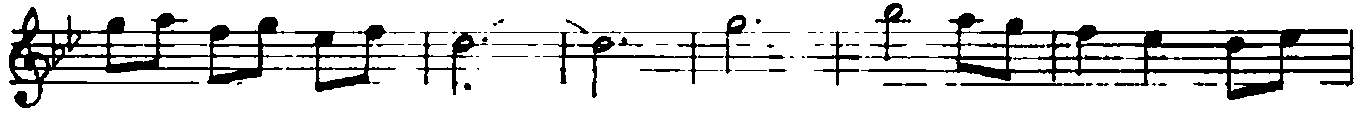


LUR DU KİM Bİ LİR (Saz)



Aranağme ...

NİHÂVEND ŞARKI
(SÖYLETENLE SÖYLEYEN DİL HEPSİ BİR)
(Sahife - 2)



SÖYLETENLE SÖYLEYEN DİL HEPSİ BİR.
LEYLÂSILA MECNUNUYLA HEPSİ BİR
ÇEKENDE BİR ÇEKİRENDE HEPSİ BİR
BİR OLMASA NE OLURDU KİMLİR
AKÇASIYLA, KARASIYLA, SARISIYLA İNSAN BİR
YAĞAN YAĞMUR, AKAN İRMAK, DERYA DENİZ HEPSİ BİR
MECNUNUNDA EMELİ BİR, LEYLÂSILA AŞKI BİR
BİR OLMASA NE OLURDU KİM BİLİR ?

Abbas Demirtaş