

# NIHÄVEND ŞARKI

DÜYEK

ÖNDE MUHTEŞEM BİR KOY  
ARKADA KÜSKÜN BİR GÖL

SÖZ ve MÜZİK: ORHAN KIZILSAVAŞ

SÖNE : 3\*45"

♩:128

SAZ



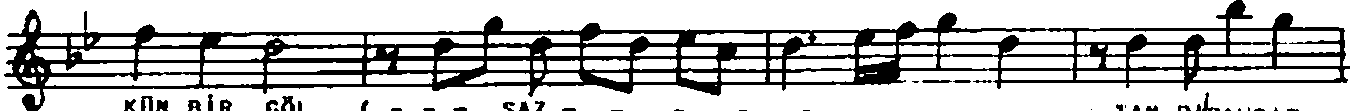
ÖN DE MUH TE



ŞEM BİR KOY AR KA DA KÜS KÜN BİR GÖL ( - -SAZ - - - - )



ÖN DE MUH TE ŞEM BİR KOY AR KA DA KÜS



KÜN BİR GÖL ( - -SAZ - - - - ) TAN RİSAL BİR



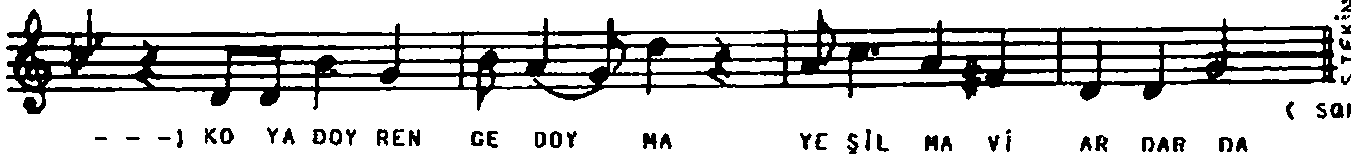
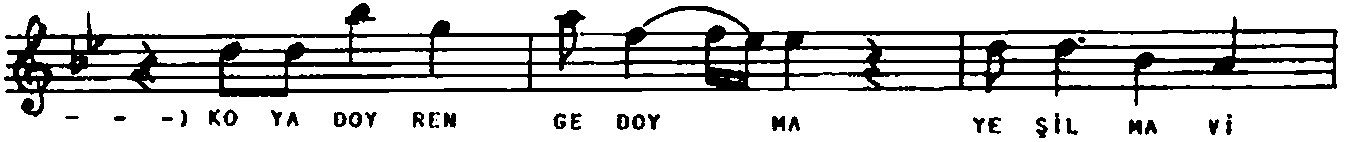
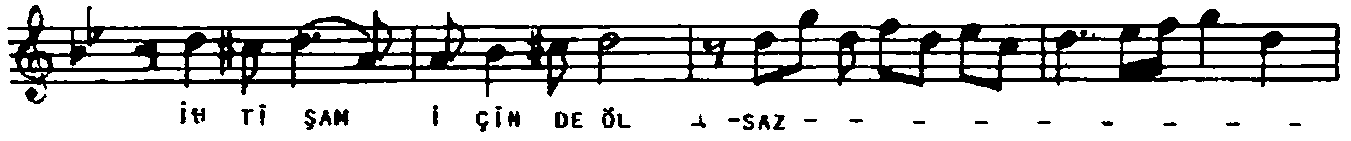
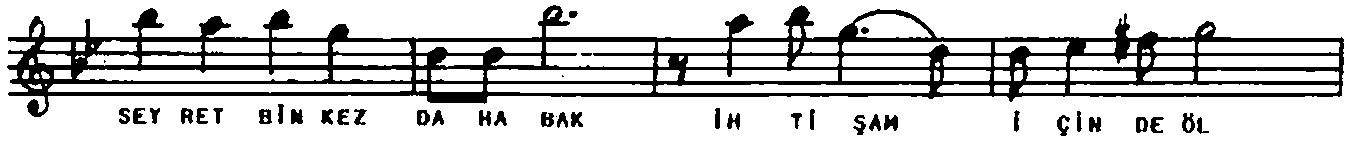
GÜ ZEL LİK RAK SE Dİ YOR SU LAR DA ( - -SAZ - - - - )



TAN RİSAL BİR GÜ ZEL LİK RAK SE Dİ YOR



SU LAR DA ( - -SAZ - - - - )



STERİN

ÖNE MUHTEŞEM BİR KOY, ARKADA KÜSKÜN BİR GÖL  
TANRISAL BİR GÜZELLİK RAKSEDİYOR SULARDA  
SEYRET, BİN KEZ DAHA BAK... İHTİŞAM İÇİNDE ÖL  
KOYA DOY, RENGE DOYMA...YEŞİL, MAVİ ARDARDA.