

NIHÄVEND ŞARKI

USÛL : DÜYER

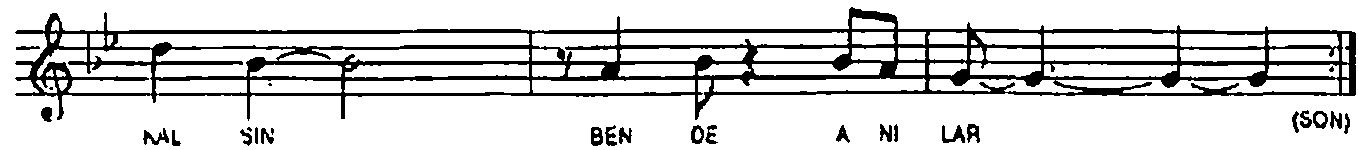
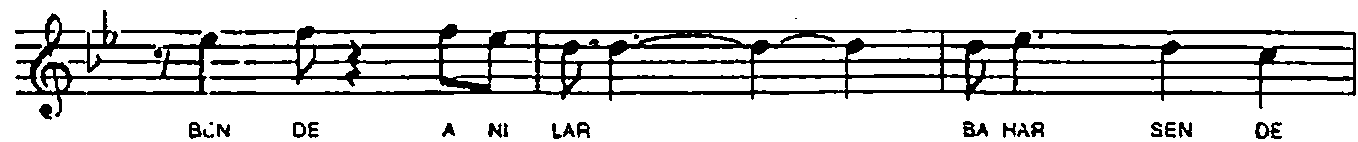
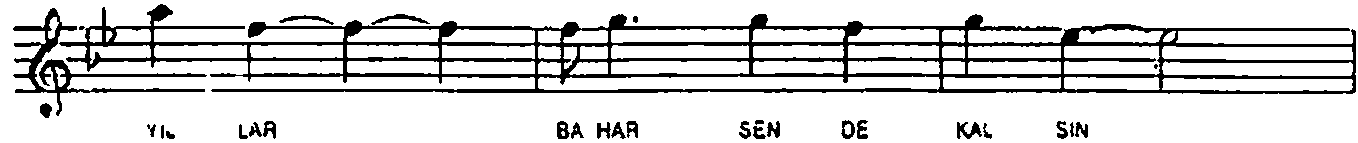
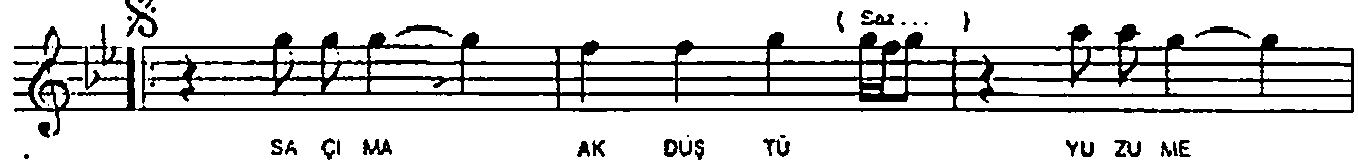
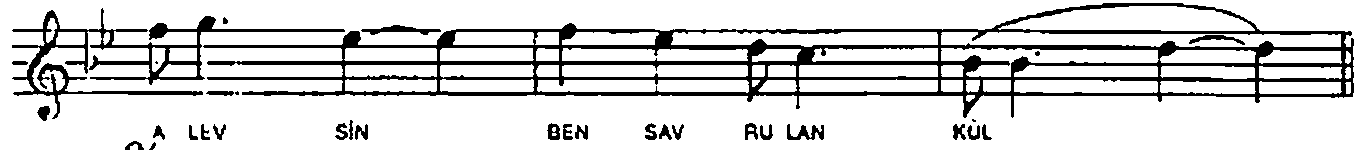
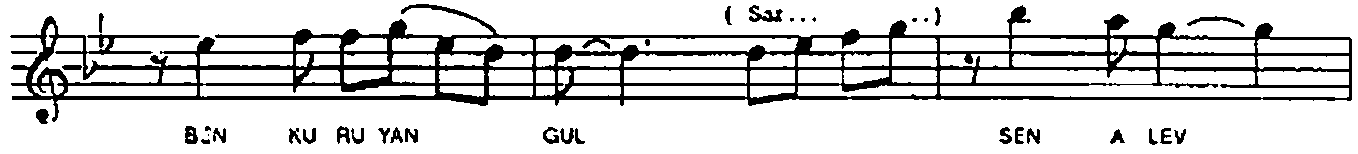
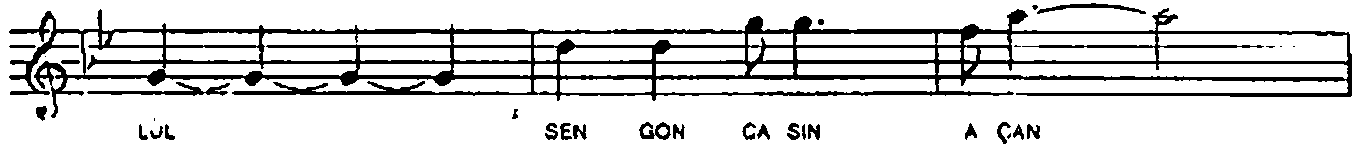
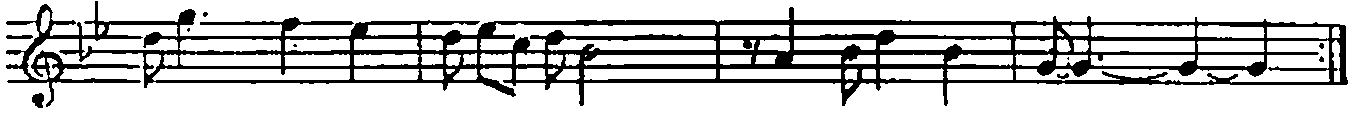
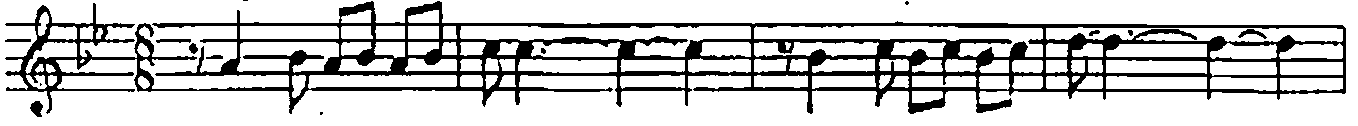
SEN NİSANSIN DAHA, BEN SARI EYLÛL

MÛZİK : METE CEVÄHİR

SÖZ : BEKİR MUTLU

♩ 144

Aranöme



(Saz ...)

Gİ DEN LER GEL MEZ LER AR TIK BEK LE

ME KAL MA SIN HÂ TI RAM

(Saz ...)

RE SİM İS TE ME EL VE DÂ

Dİ YO RUM SA KIN KAL DE ME

SEN NİSANSIN DAHA, BEN SARI EYLÜL
 SEN GONCASIN AÇAN, BEN KURUYAN GÜL
 SEN ALEV ALEVSİN, BEN SAVRULAN KÜL
 SAÇIMA AK DÜŞTÜ, YÜZÜME YILLAR
 BAHAR SENDE KALSIN, BENDE ANILAR

GİDENLER GELMEZLER ARTIK BEKLEME
 KALMASIN HÂTIRAM RESİM İSTEME
 ELVEDÂ DİYORUM SAKIN KAL DEME
 SAÇIMA AK DÜŞTÜ, YÜZÜME YILLAR
 BAHAR SENDE KALSIN, BENDE ANILAR