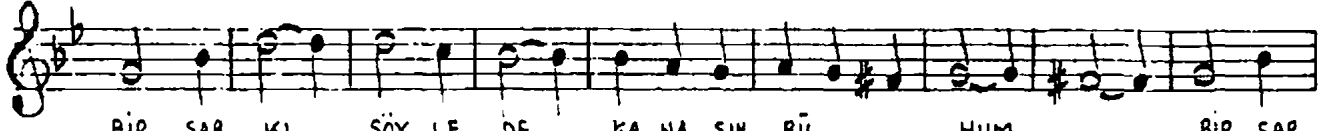
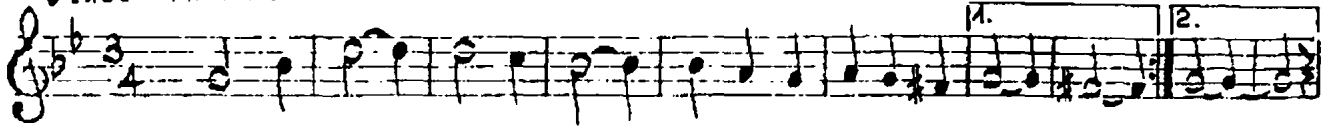


NIHAVEND ŞARKI
BİR ŞARKI SÖYLEDE

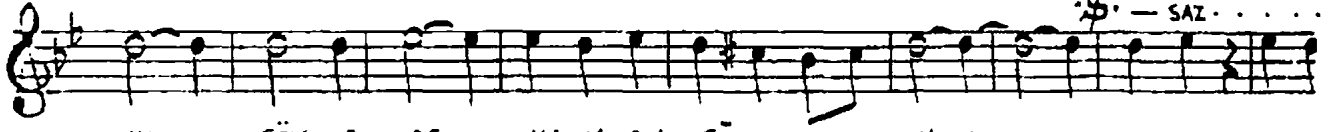
MÜZİK : ZEKİ MÜREN

SEMÂİ

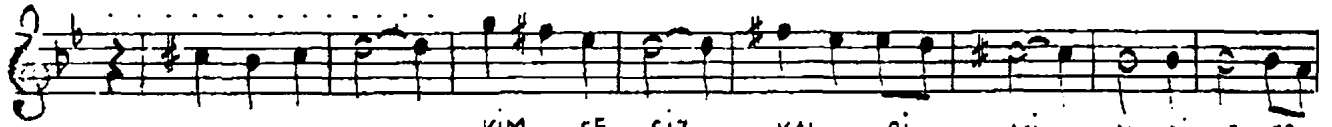
156 ARANAĞME



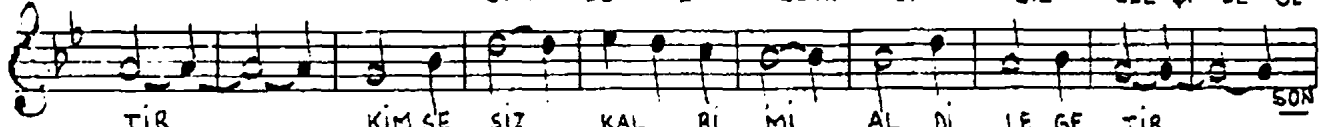
BİR ŞAR KI SÖY LE DE KA NA SIN RÜ HUM BİR ŞAR



KI SÖY LE DE KA NA SIN RÜ HUM



KİM SE SİZ KAL Bİ Mİ AL DI LE GE
GÖN LÜ ME ZEVK DE GİL GEL Çİ LE GE



TİR TİR KİM SE SİZ KAL Bİ Mİ AL DI LE GE TİR
— SAZ. — GÖN LÜ ME ZEVK DE GİL GEL Çİ LE GE TİR



İ NAN SEN Gİ DE Lİ



AŞ KİM GÜ RÜ RUM İ NAN SEN SİN BE NİM



AŞ KİM GÜ RÜ RUM

FERİT SİDAL PLAKTAN NOTASINI YAZDI.

BİR ŞARKI SÖYLEDE KANASIN RÜHÜM
KİMSESİZ KALBİMİ AL DİLE GETİR
(İNAN SEN GİDELİ AŞKIM GÜRÜRÜM
İNAN SENSİN BENİM AŞKIM GÜRÜRÜM)
GÖNLÜME ZEVK DEĞİL GEL ÇİLE GETİR