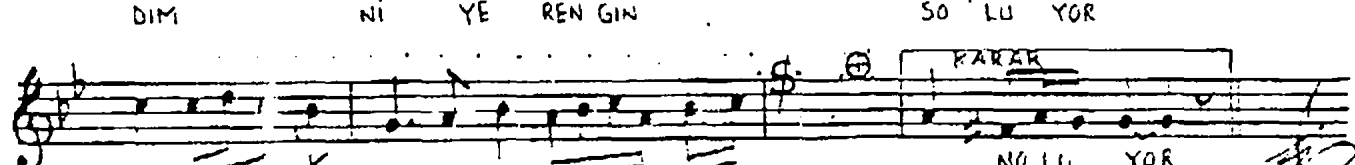
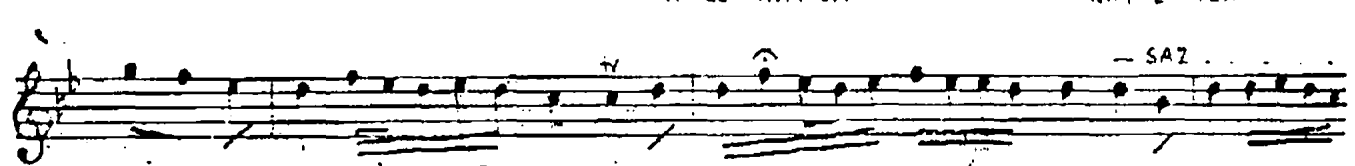
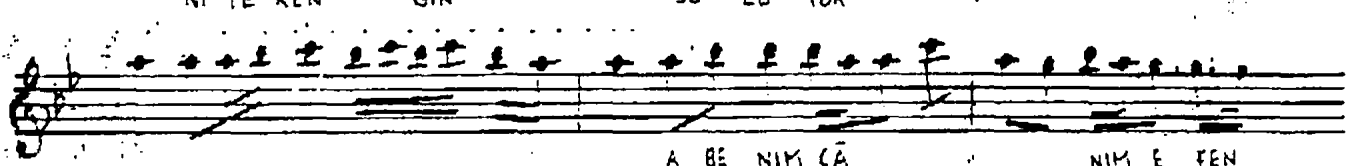
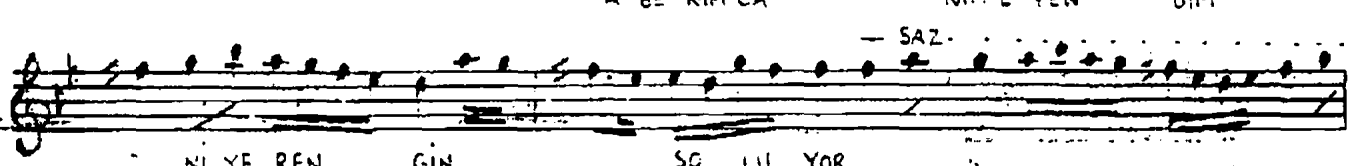
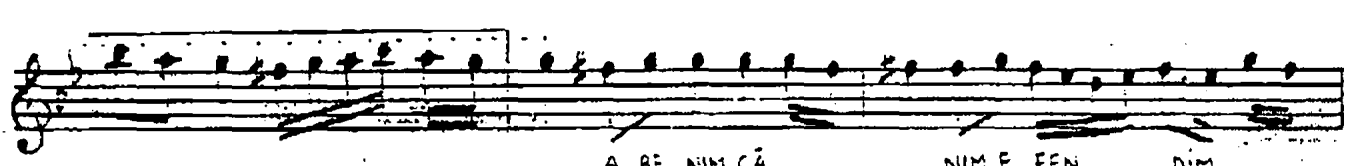
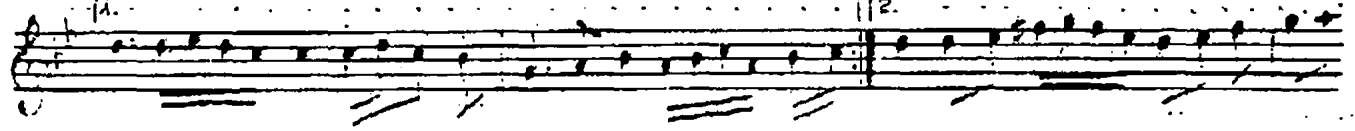
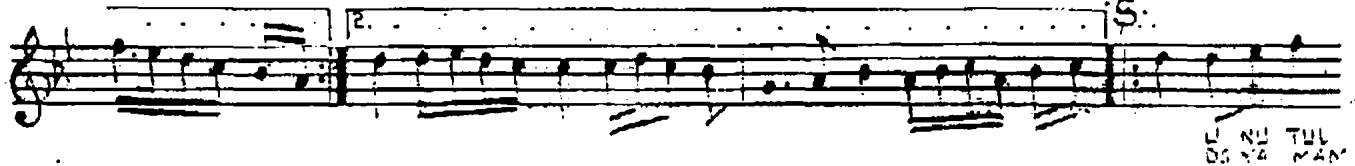
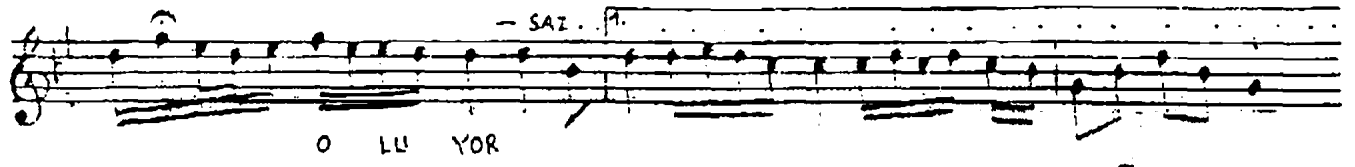
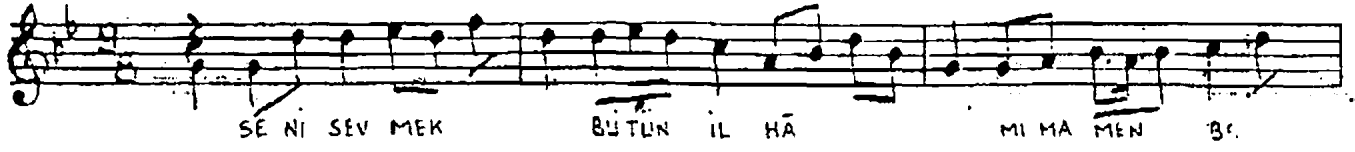


NIHAVEND SARKI  
SENI SEVMEK BÜTÜN İLHÂMIMA

MÜZİK : ALÂEDDİN YAVASÇA  
SÖZ : ARIF RÜŞTÜ GÖRGÜN

AKSAK  
♩ : 144



SENI SEVMEK BÜTÜN İLHÂMIMA MENBA OLUYOR  
UNUTULMAZ EBEDİ HAZİLE GÖNLÜM DOLUYOR  
A BENİM CANIM ETENDİM NİYE RENGİN SOLUYOR  
DOYAMAM BEZMİNE HÂLÂ BANA BİLMEM NÖLUYOR

FERİT SİDAL PLÂKTAN  
NOTASINI YAZMIŞTIR.