

♩ = 88
USÛLÜ: SOFYAN

NİHAVEND FANTEZİ
-HER GÖNÜL BİR SEVGİ YAŞAR-

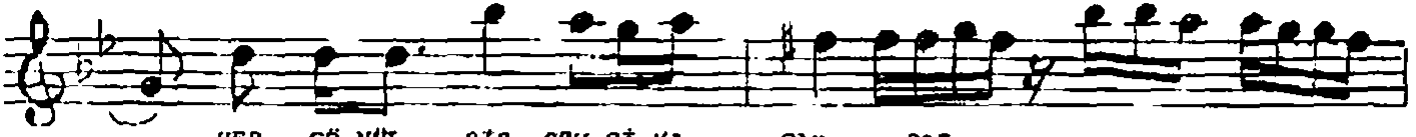
MÜZİK: SUPHİ İDRİSOĞLU
SÖZ : MEHMET CEM YİĞİT



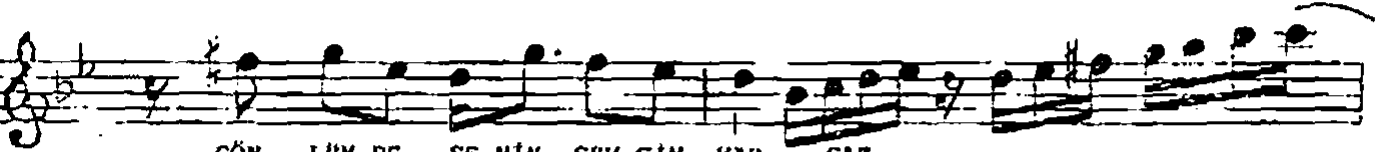
HER GÖNÜL BİR SEVGİ YAŞAR -SAZ----



GÖN LÜM DE SE NİN SEVGİN VAR -SAZ----



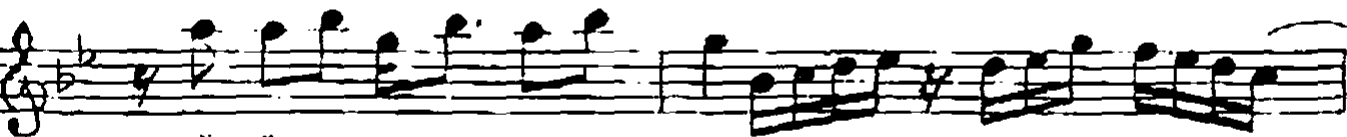
HER GÖNÜL BİR SEVGİ YAŞAR -SAZ----



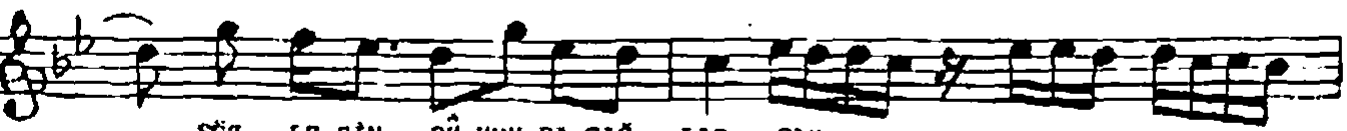
GÖN LÜM DE SE NİN SEVGİN VAR -SAZ----



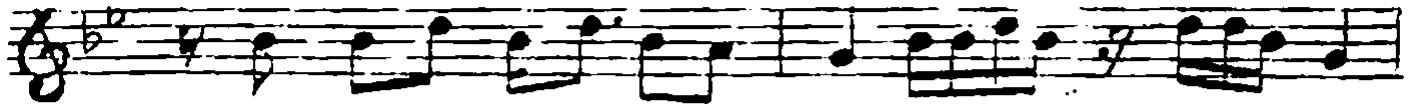
SÖZ LE RİN RÛ HUN DA ÇAĞ LAR -SAZ----



GÖN LÜM DE SE NİN SEVGİN VAR -SAZ----



SÖZ LE RİN RÛ HUN DA ÇAĞ LAR -SAZ----



GÖN LÜM DE SE NİN SEV GİN VAR -SAZ-----

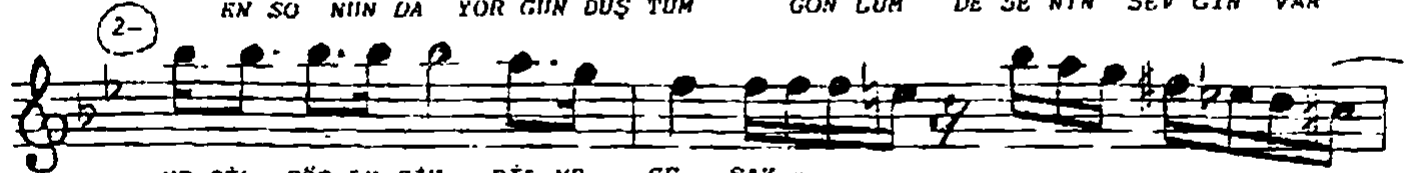


SEV Gİ DE HEP SA NA KOŞ TUM KA NAT LAN DIM DAĞ LAR AŞ TIM



EN SO NİN DA YOR GÜN DÜŞ TUM GÖN LÜM DE SE NİN SEV GİN VAR

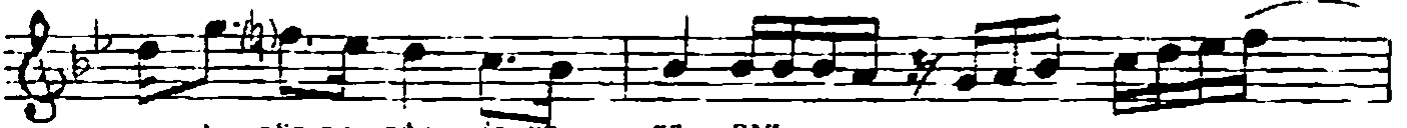
D.C
(SON)



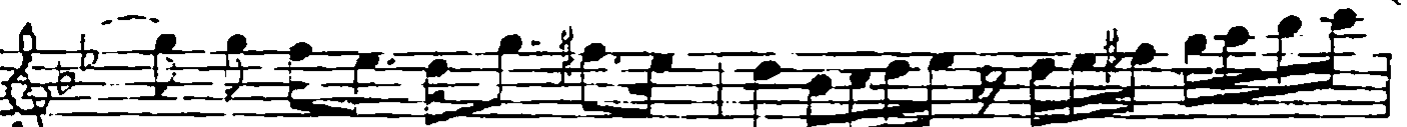
YE ŞİL GÖZ LİK RİN BİL ME CE -SAZ-----



SAÇ LA RIN KA RAN LİK GE CE -SAZ-----



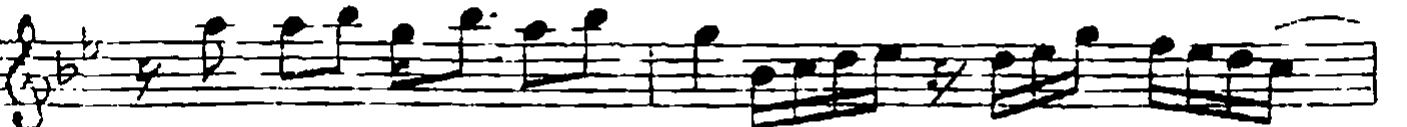
YE ŞİL GÖZ LE RİN BİL ME CE -SAZ-----



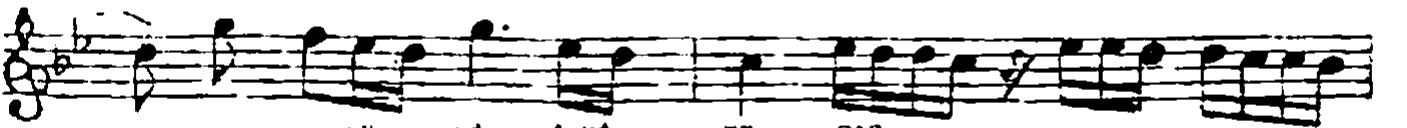
SAÇ LA RIN KA RAN LİK GE CE -SAZ-----



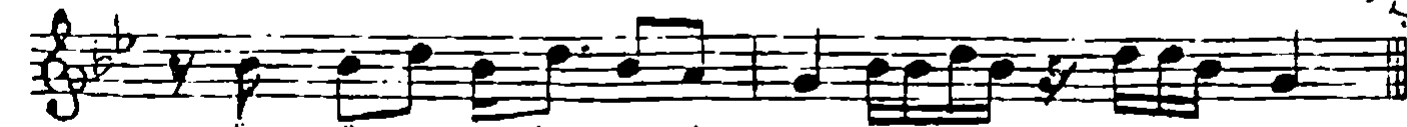
AN LA GÜ ZE LİM İ Yİ CE -SAZ-----



GÖN LÜM DE SE NİN SEV GİN VAR -SAZ-----



AN LA GÜ ZE LİM İ Yİ CE -SAZ-----



GÖN LÜM DE SE NİN SEV GİN VAR -SAZ-----

ERDENLİ

HER GÖNÜL BİR SEVGİ YAŞAR
GÖNLÜMDE SENİN SEVGİN VAR

SEVGİDİR HEP SANA KOŞTUM
KANATLANDIM DAĞLAR AŞTIM

YEŞİL GÖZLERİN BİLMECE
GÖZLERİN BİLMECE