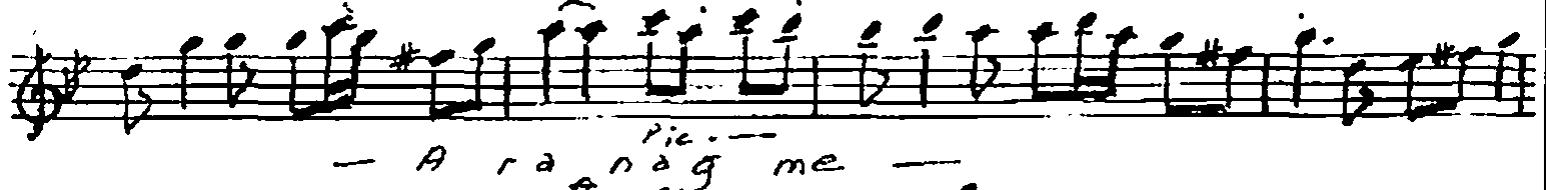
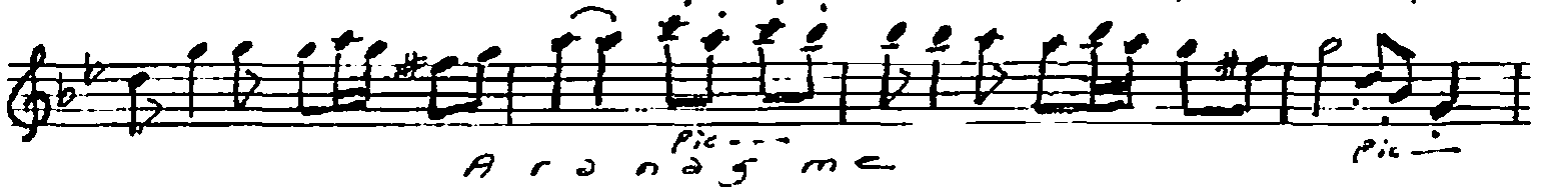
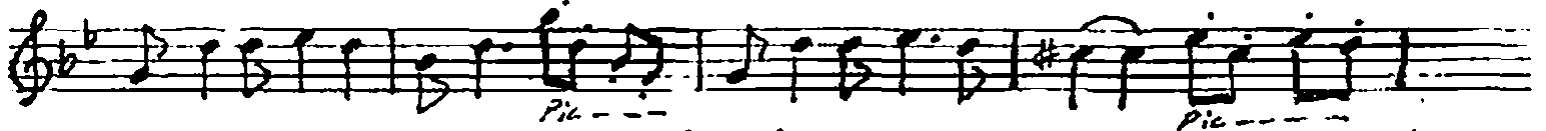
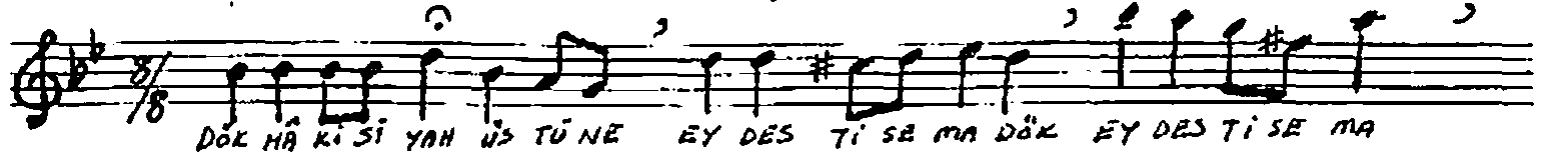


Usulü - Düyek

♩ = 200

NIHAVEND  
(Kıy Eğileri)

MÜKİ NİLGÜN DEMİRAG  
SÖZ: CENAP ŞAHABETTİN

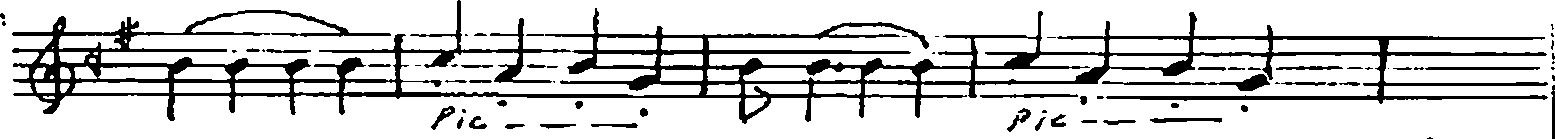




KAP LA DI' DIR DE RİN SÜ KÜ TA YERİ KARLAR - SAZ -



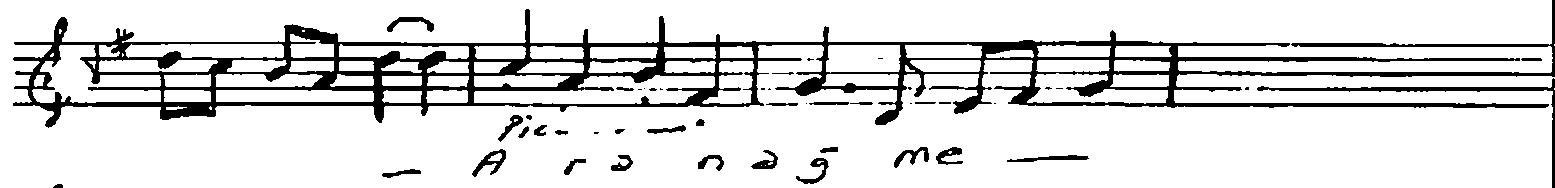
KI SES SİZ GE DEM BE DEM DEM BE DEM AĞ LAR - SAZ -



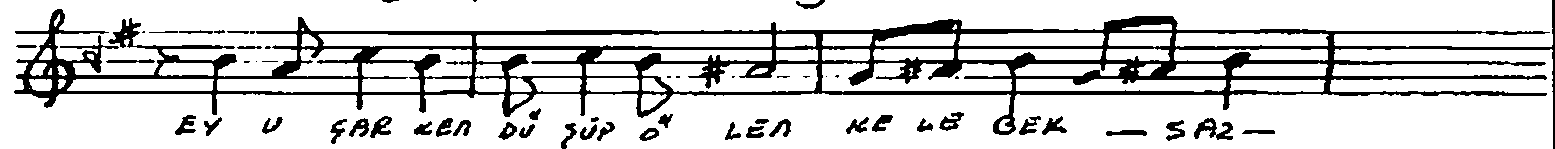
Pic - - - Pic - - -



Pic - - - Pic - - -



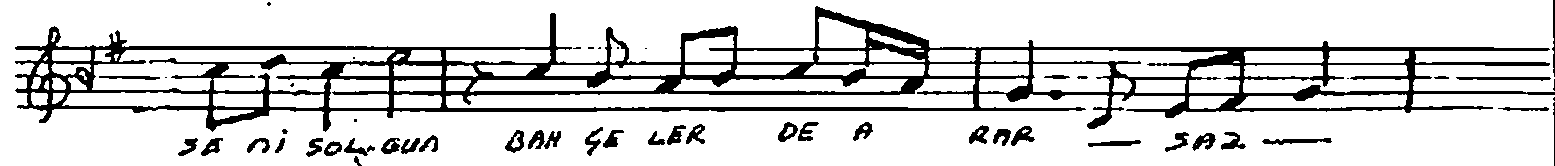
Pic - - - A r a n a g me -



EY U ŞAR KEN DÜ ŞÜP ÖN LEN KE LE GEK - SAZ -



BİR BE YAZ - ME LİK KANA DI GI Bİ İÇER - SAZ -



SA Nİ SÖL GÜN BAH ŞE LER DE A RAR - SAZ -



Pic - - - Pic - - -



Pic - - - Pic - - -



Pic - - - A r a n a g me -



SEN A ŞAR KEN Yİ NE Şİ ÇEK LER ÜS TÜN DE

U FA CIL · BİR Gİ ÇEK Lİ YEL PA ZE Gİ Bİ

EY SÖ NEARUH ŞİM Dİ SE NİN ÜS TÜN DE

BAŞ LA Dİ NAZ LI NAZ LI UŞ MA YA KAR LAR

Kİ SE MA DAN DÜ ŞER DÜ ŞER AÇ LAR — SAZ —

*Pic.* — A ra na ş me — *Pic.*

UŞ TUNUZ GİT Tİ NİZ SİZ LER DE EY KUŞ LAR — SAZ —

KÜ GÜ CÜK BE. YAZ BAŞ LI BAY KUŞ LAR Gİ Bİ KAR — SAZ —

Sİ Zİ DAL LAR DA — SAZ — LÂ NE LER DE A RAR —

SERBEST Des tin de ey se mâ i şî tâ tû de tû de dir

Ber gi se men, — SAZ — ce nâ hi ke bû ter — SAZ —

Se hâ bi ter Dâ key se mâ re vâ nî tâ bi at gû nû de dir

Se hâ bi ter Dâ key se mâ re vâ nî tâ bi at gû nû de dir

hâ ki si'ya'hin üstü na sâ fi sü kü fe ler

KAR E MELLER <sup>1</sup>Gi BI -SAZ- GÖK TEN -SAZ- YA Eİ YOR -SAZ-

KAR HER TA RAFTA <sup>2</sup>-SAZ- HA YÂ LIM Gİ Bİ KO ŞU YOR -SAZ-

KAR HER TA RAFTA -SAZ- HA YÂ LIM Gİ Bİ KO ŞU YOR -