

MÜZİK: ALİ BASTURKÇÜ  
SÖZ: M. SADULLAH ÖZTÜ

Düyek

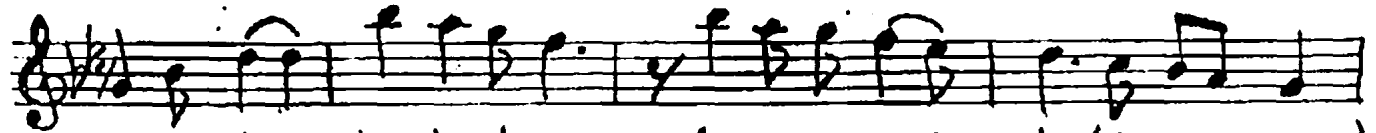
NİHAİYEND ŞARKE

HASRETİN BİR DAMLA YAŞ GÖZPİNARIMDA

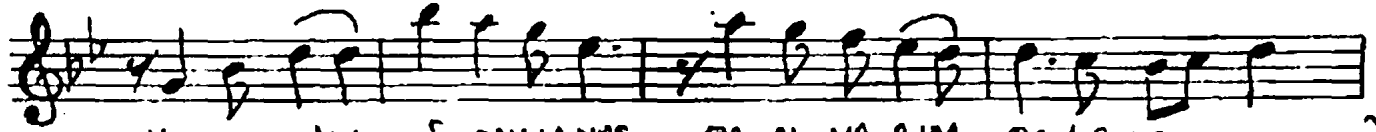
$\text{♩} = 128$



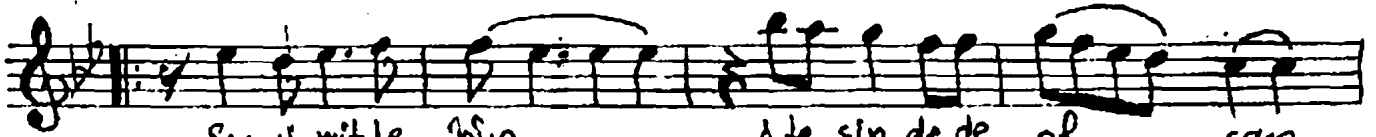
- SAZ -



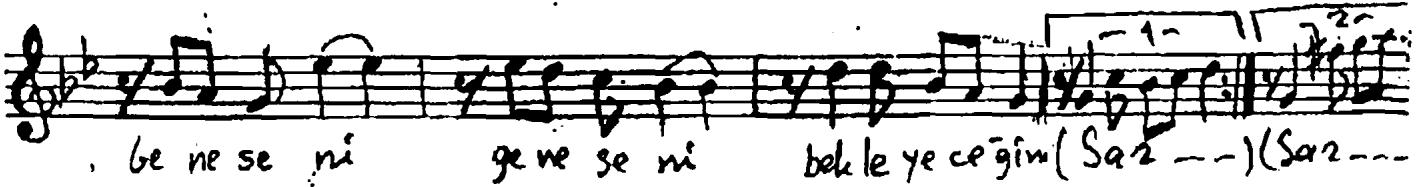
Has re tin bir dam la yaş göz pi na rim da (Saz ----)



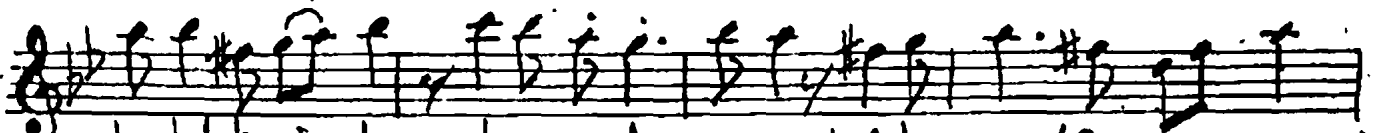
HAS RE TIN BİR DAM LA YAŞ. GÖZ Pİ NA RIM DA (SAZ ----)



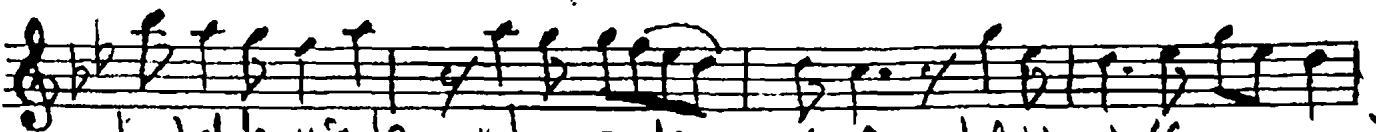
San ı mıt le rin ö te sin de de ol san



ge ne se ni ge ne se ni bekle ye ce ğim (Saz ---) (Saz ---)



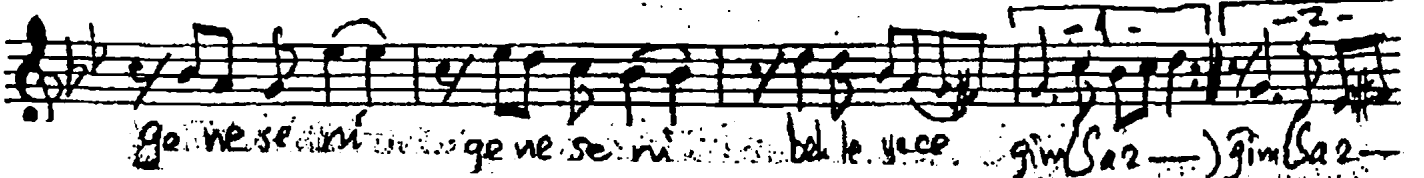
bu bekle yiş te yet me se de gü cü kal bi min (Saz ----)



bu bekle yiş te yet me se de gü cü kal bi min (Saz ----)



Ru hu mun son suz lu ğun da sonsuz lu ğun da (Saz ----)



ge ne se ni ge ne se ni bekle ye ce ğim (Saz ---) ğim (Saz ---)