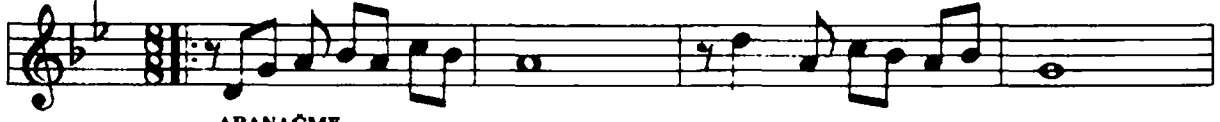


**NIHÁVEND ŞARKI**  
(BİTMEMİŞ GİBİ)

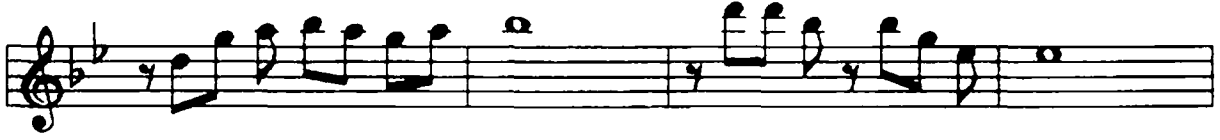
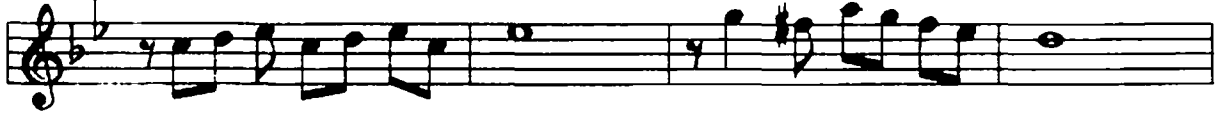
MÜZİK : DURSUN KARACA  
SÖZ : SAADET VURAL

USÛLÜ : DÜVEK

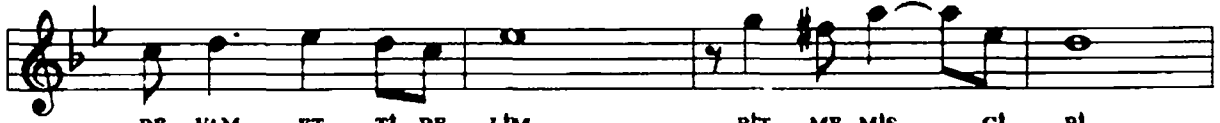
♩ = 192



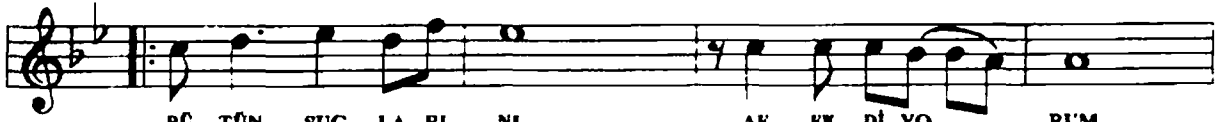
ARANAĞME



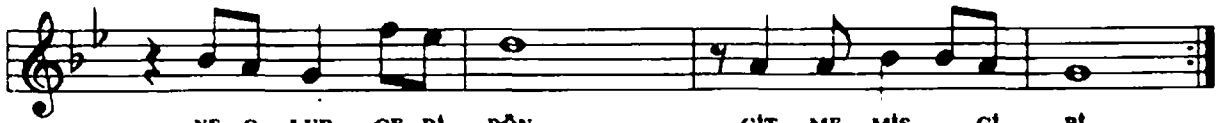
SE NİN LE BU AŞ KI KAL DI ĞI YER DEN



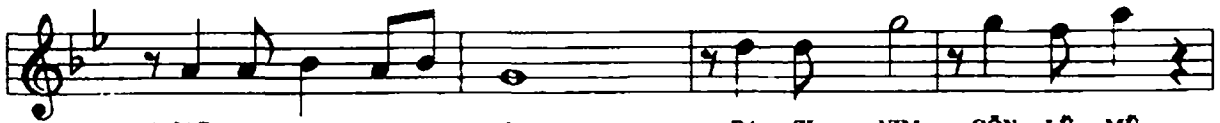
DE VAM ET Tİ RE LİM BİT ME MİŞ Gİ Bİ



BÜ TÜN SUÇ LA RI NI AF FE Dİ YO RUM

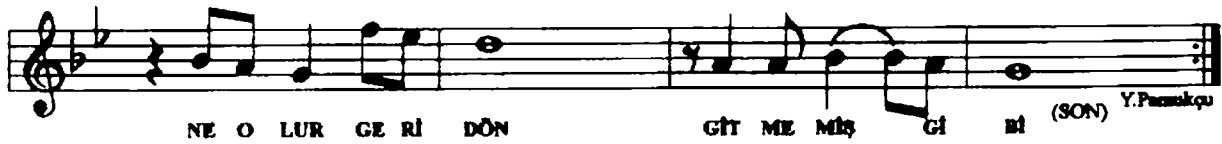
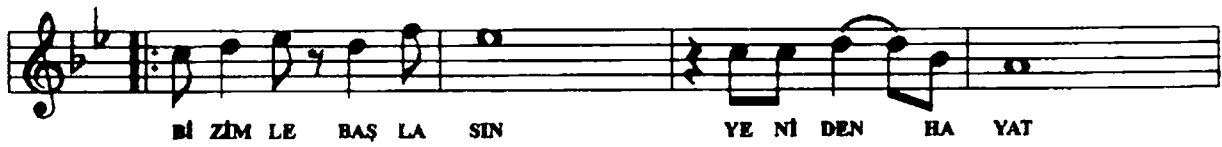
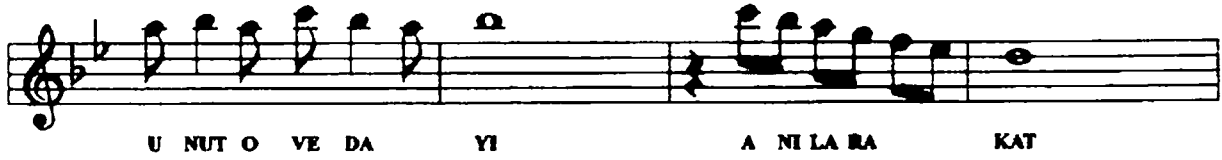
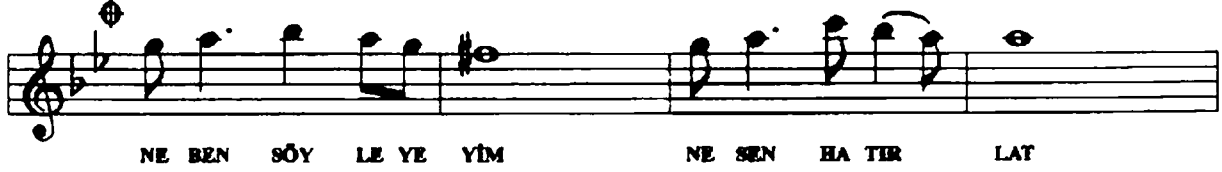
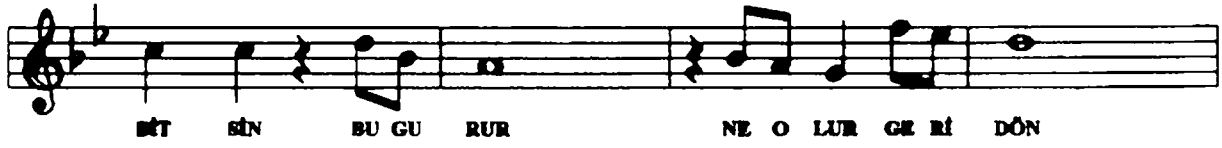
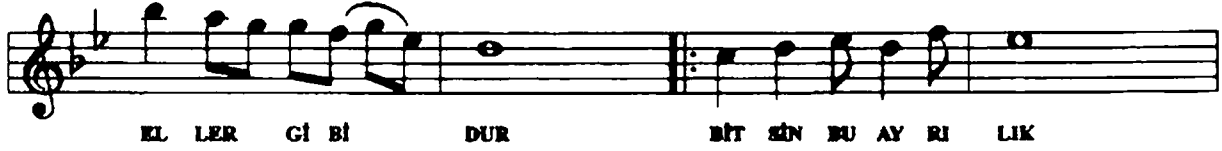
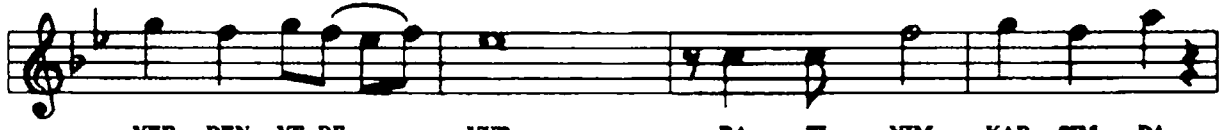


NE O LUR GE Rİ DÖN GİT ME MİŞ Gİ Bİ



( SAZ ..... ) RA ZI YIM GÖN LÜ MÜ

## Nihâvend Şarkı (2.Sayfa)



SENİNLE BU AŞKI KALDIĞI YERDEN  
DEVAM ETTİRELİM BİTMEMİŞ GİBİ  
BÜTÜN SUÇLARINI AFFEDİYORUM  
NE OLUR GERİ DÖN, GİTMEMİŞ GİBİ

RAZİYİM GÖNLÜMÜ YERDEN YERE VUR  
RAZİYİM KARŞIMDA ELLER GİBİ DUR  
BİT SİN BU AYRILIK, BİT SİN BU GURUR  
NE OLUR GERİ DÖN GİTMEMİŞ GİBİ

NE BEN SÖYLEYİYİM NE SEN HATIRLAT  
UNUT O VEDAYI, ANILARA KAT  
BİZİMLE BAŞLASIN YENİDEN HAYAT  
NE OLUR GERİ DÖN, GİTMEMİŞ GİBİ