

Makam : NİHÂVEND

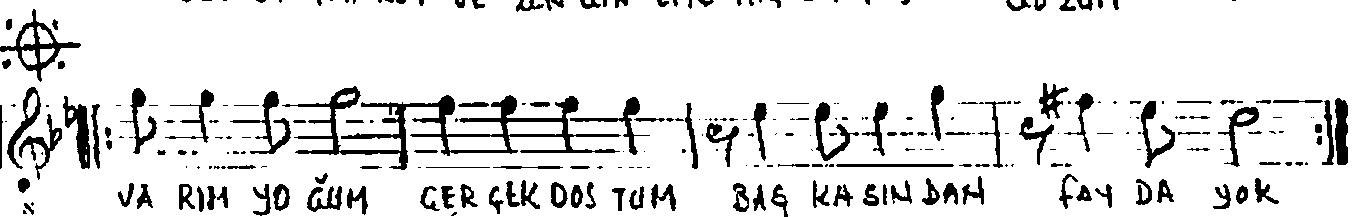
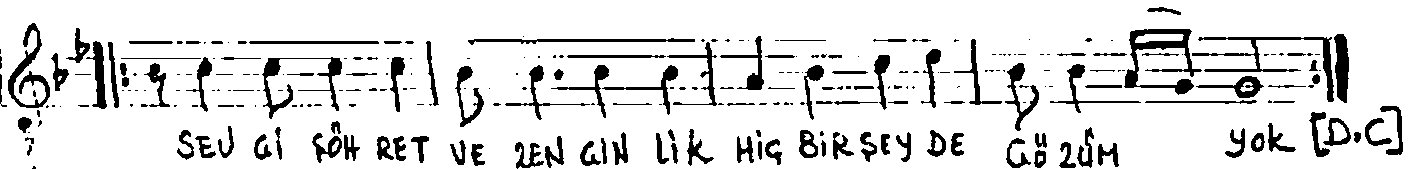
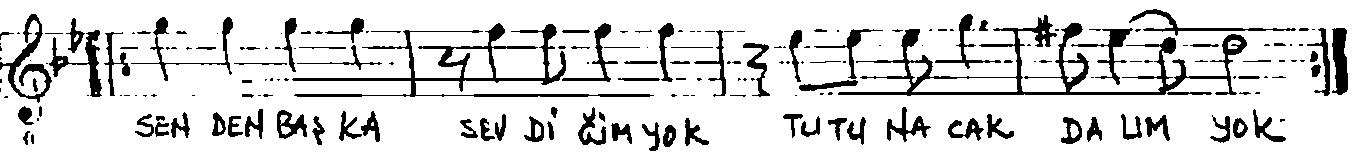
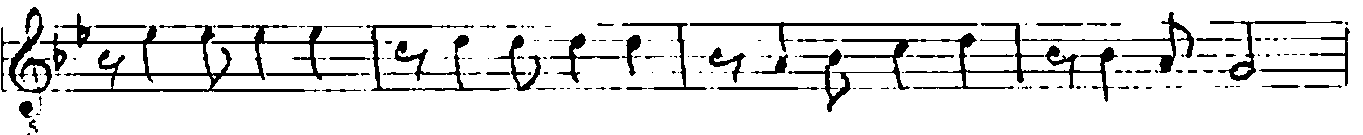
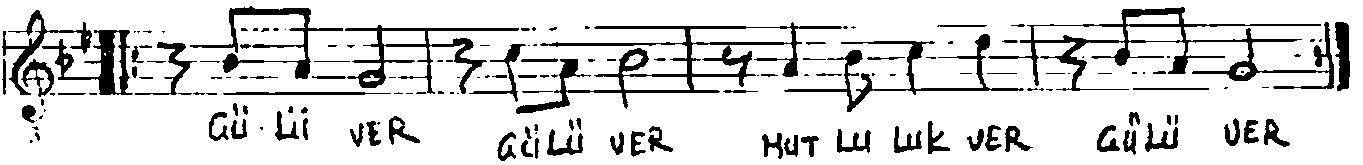
Söz : ...TÜLAY ARICI.

Usul : DÜHEK

GÜLLÜVER

Müzik : ...TÜLAY ARICI.

Süre :



TA DİM Tİ ZİM VAR SA SENSİN BAŞ KA BİR Dİ LE GİM YOK

GÜ LÜ VER GÜ LÜ VER MUT LU LUK VER GÜ LÜ VER

HİÇ HA BİR SİZ AN SI ZİN GEL MUT LU LUK VER GÜ LÜ VER [SON]