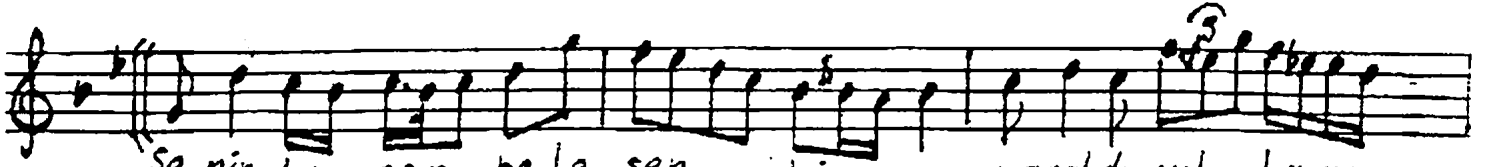
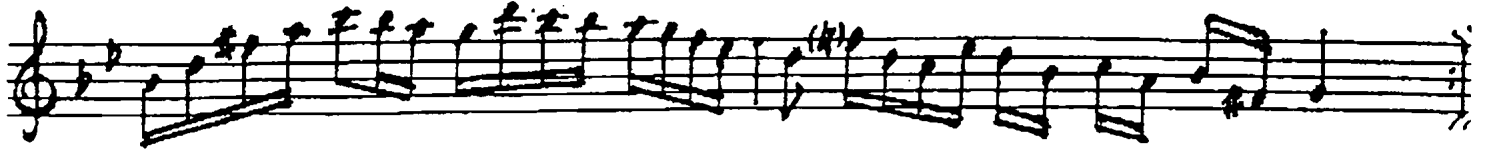


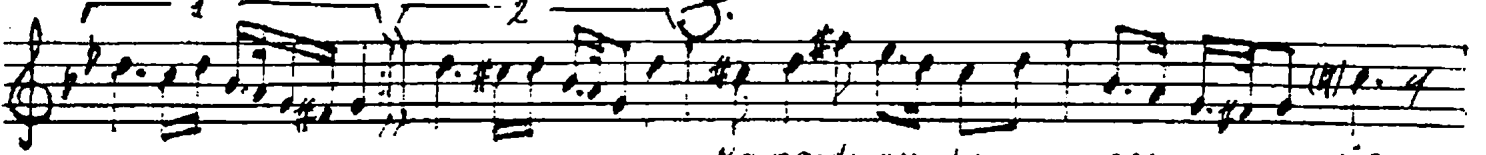
Düzyek d. 120

Nihavend

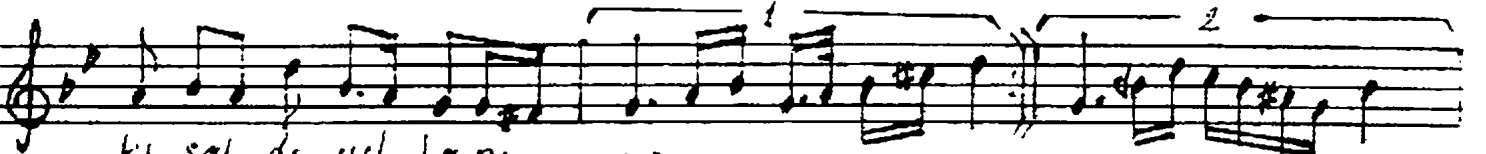
Söz: Mehmet Tücan Yaran
Müşk: AKIN ÖZKAN



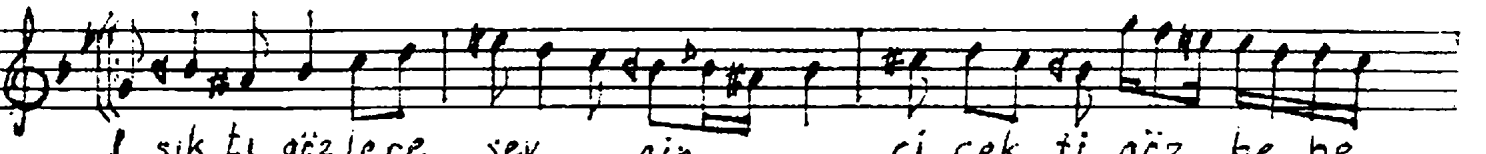
Se nin Le pem be Le şen bir masaldı yıl La rı



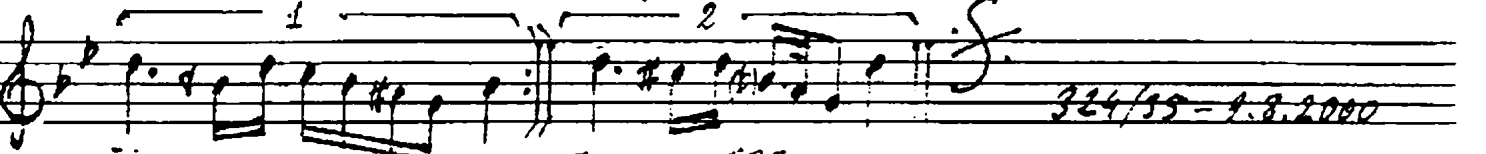
miz — SAZ — miz — SAZ — Karardı ay La rı sen si z



ki sal dı yıl La rı miz — SAZ — SAZ



İ şık tı göz Lere sev ğin çi çek ti göz be be



ğın — SAZ — ğın — SAZ —

324/35-1.8.2000

SENİNLE PEMBELEŞEN BİR MASALDI YILLARIMIZ

KARARDI AYLARI SENSİZ, KISALDI YILLARIMIZ

İŞIKTI GÖZLERE SEVGİN, ÇİÇEKTI GÖZBEBEĞİN

KARARDI AYLARI SENSİZ, KISALDI YILLARIMIZ