

NIHÂVEND ŞARKI

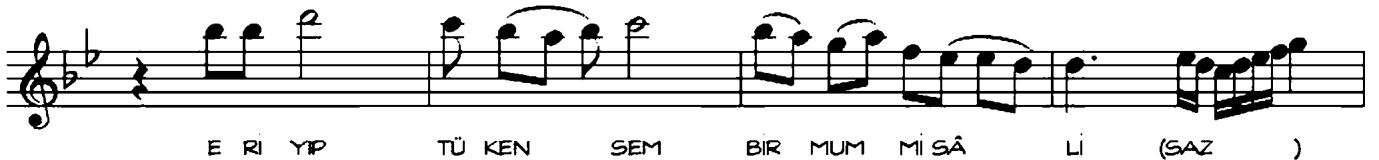
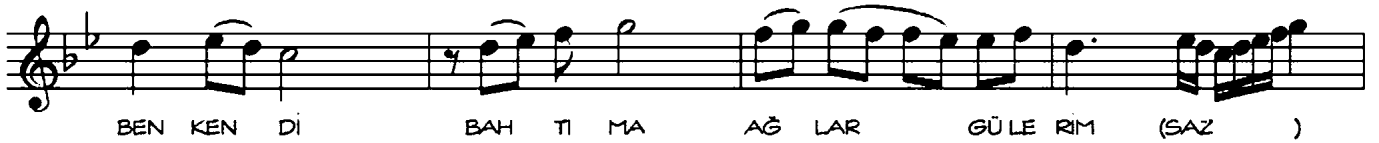
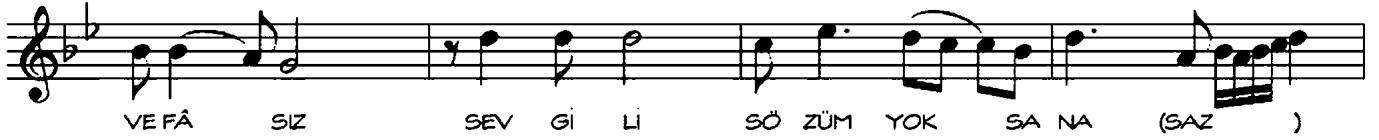
VEFÂSIZ SEVGİLİ SÖZÜM YOK SANA

USÛLÜ : DÜMEK

♩ = 200

MÜZİK : FÂRUK ŞAHİN
SÖZ : YALÇIN BENLİCAN

ARANAĞME

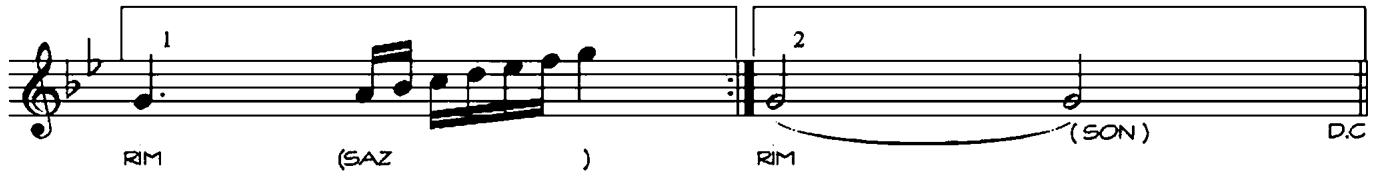




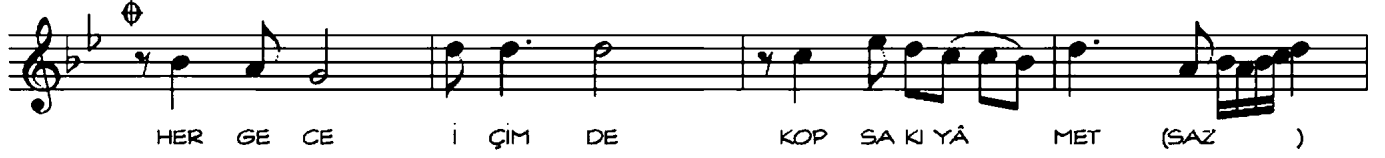
Â Şİ ĞA YA KI ŞİR AŞ KIN ME LÂ Lİ (SAZ)



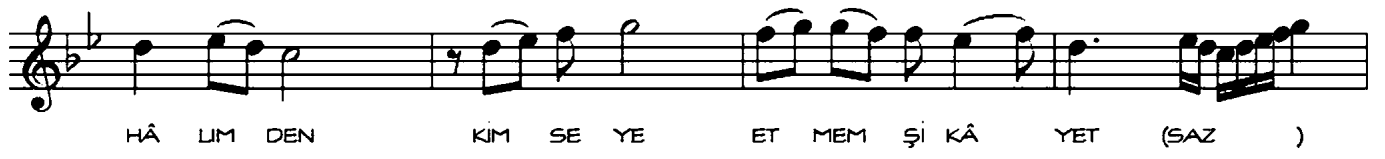
BEN KEN DIM YA NA RIM KEN DIM SÖ NE



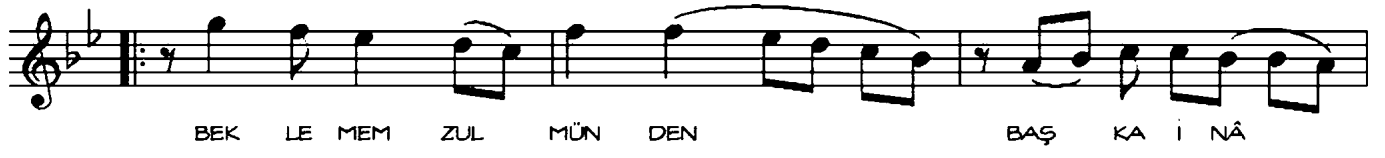
RIM (SAZ) RIM (SON) D.C



HER GE CE İ ÇİM DE KOP SA KI YÂ MET (SAZ)



HÂ LIM DEN KİM SE YE ET MEM Şİ KÂ YET (SAZ)



BEK LE MEM ZUL MÜN DEN BAŞ KA İ NÂ



YET (SAZ) BEN KEN DIM YA NA RIM



KEN DIM SÖ NE RİM (SAZ) RİM

VEFÂSIZ SEVGİLİ SÖZÜM YOK SANA
BEN KENDİ BAHTIMA AĞLAR GÜLERİM
SER VERİR SİR VERMEM BİR BAŞKASINA
BEN KENDİM YANARIM KENDİM SÖNERİM

HER GECE İÇİMDE KOPSA KIYÂMET
HÂLİMDEN KİMSEYE ETMEM ŞİKÂYET
BEKLEMEM ZULMÜNDEN BAŞKA İNÂYET
BEN KENDİM YANARIM KENDİM SÖNERİM

ÜSTÜME GİYİNSEM CÜMLE VEBÂLİ
ERYİP TÜKENSEM BİR MUM MİSÂLİ
ÂŞİĞA YAKIŞIR AŞKIN MELÂLİ
BEN KENDİM YANARIM KENDİM SÖNERİM