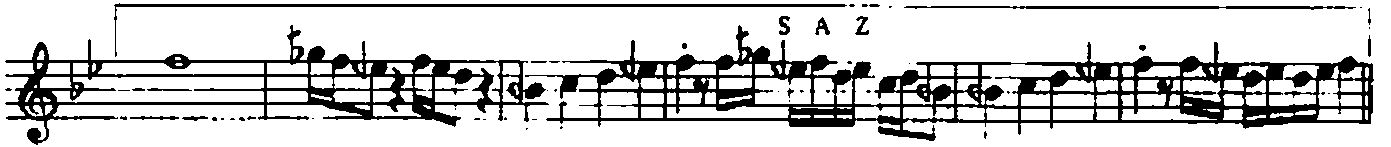
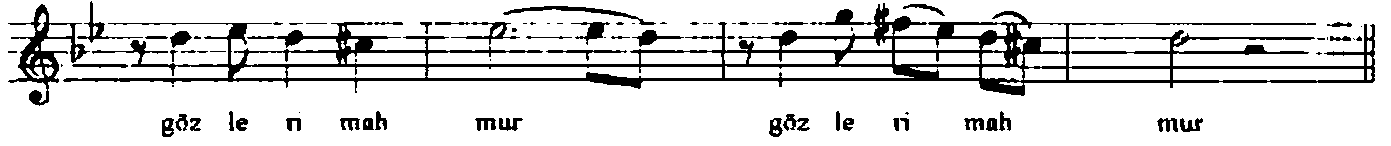
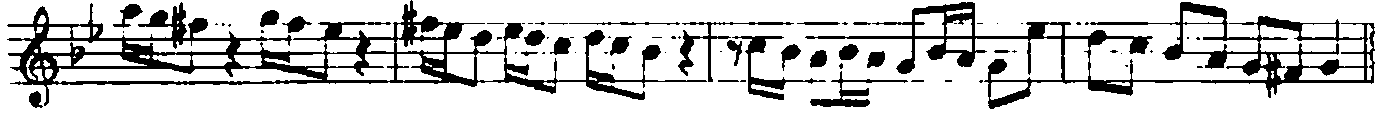
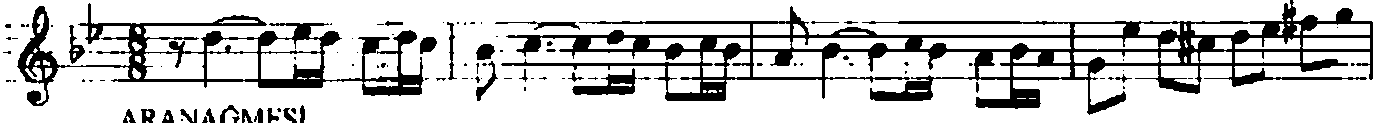


NIHAVEND ŞARKI

Ruhumda gezen sevgilisin gözleri mahmur

Usulü: Düyek

Çiğirte: Fuat Hulusi DEMİRELLİ
Beste: Sadettin KAYNAK



Ruhumda gezen sevgilisin gözleri mahmur (devamı)

The image shows a musical score for a song. It consists of three staves of music. The first staff is the vocal line, with lyrics written below it: "ben kul lu ğa gö züm". Above the first staff, the word "S A Z" is written in a box. The second staff is a guitar accompaniment, with the word "S A Z" written below it. The third staff is another guitar accompaniment, with the word "S A Z" written below it. The score is written in a single system with a treble clef and a key signature of one flat. The music is in a 4/4 time signature. The first staff ends with a double bar line and a repeat sign. The second staff ends with a double bar line and a repeat sign. The third staff ends with a double bar line and a repeat sign. The name "Dr. Semra Özgen" is written at the bottom right of the third staff.

ben kul lu ğa gö züm

S A Z

S A Z

S A Z

Dr. Semra Özgen

*Ruhumda gezen sevgilisin gözleri mahmur
Ruhumda nasılsan bana sen öyle yakın dur
Sor gönlümü verdim sana ben kulluğa gözüm
Ruhumda nasılsan bana sen öyle yakın dur*