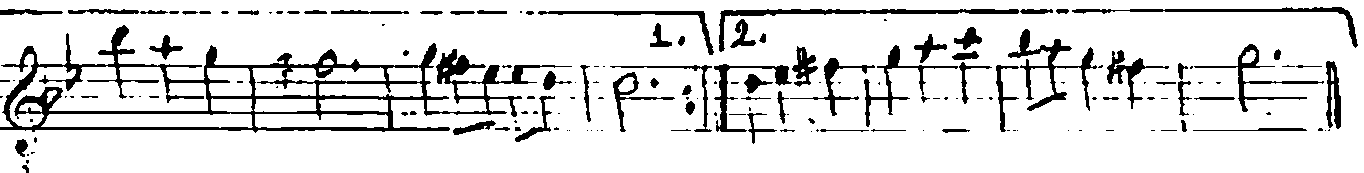
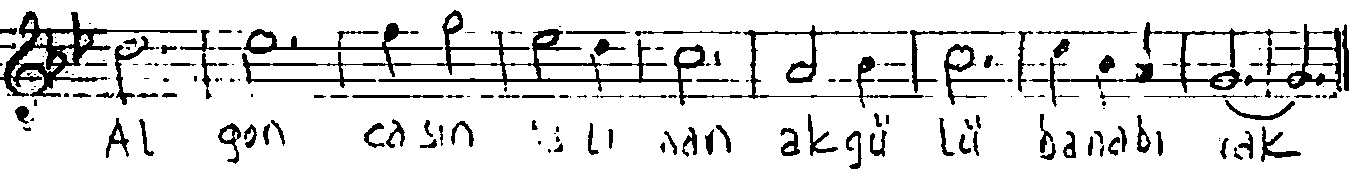
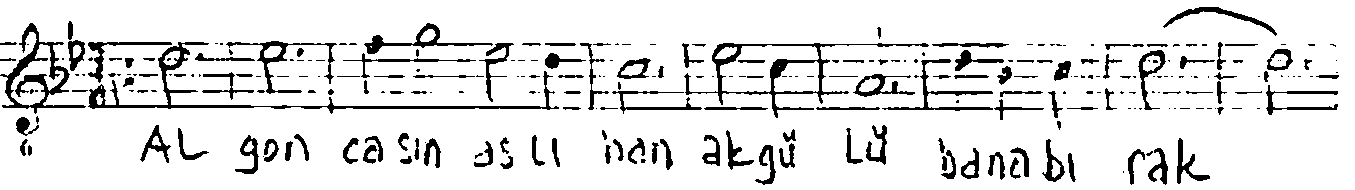
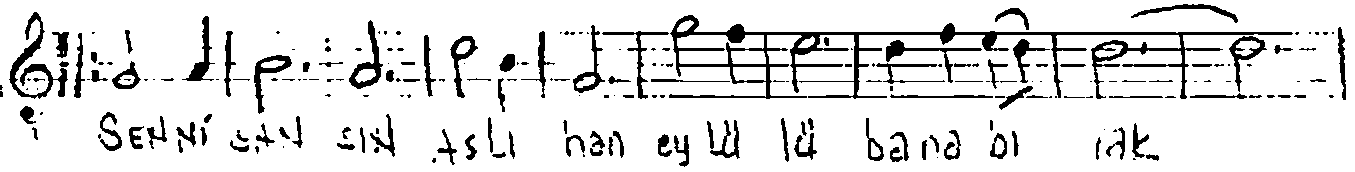


Makam : Nihavend.

Söz : Hüsemettin ALAÇIN

Usül : Semâî... SEN NİSAHSIN ASLIHAN... Müzik : Kadir Arman

Süre : ♩ = 140



Bu mişhadan

I ŞIL I ŞIL parla yan yüzün ayna gön lü ne

I ŞIL I ŞIL par la yan yüzün ayna gön lü ne

Sen a lev sin As li han son kü lü bana ol

Sen a lev sin As li han son kü lü bana ol rak (Son)

~~SEN NİSANIN ASLIHAN, EYLÜLÜ BANA BIRAK~~  
~~RI GÖN LÜSİN ASLIHAN, AK GÜLÜ BANA BIRAK~~  
~~İŞİL İŞİL PARLAYAN, YÜZÜN AYNA GÖNLÜME~~  
~~SEN ALEV SİN ASLIHAN, SON KÜLÜ BANA BIRAK.~~