

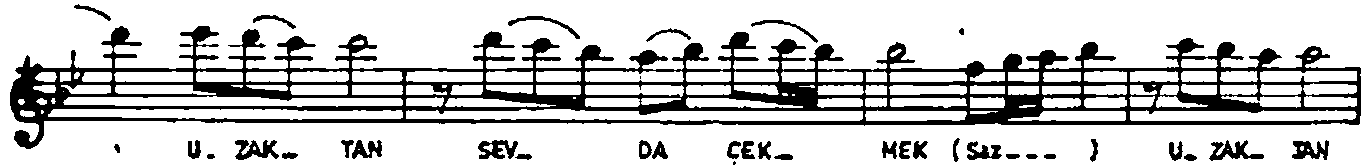
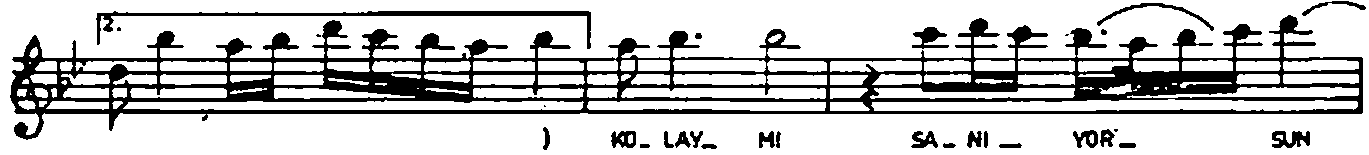
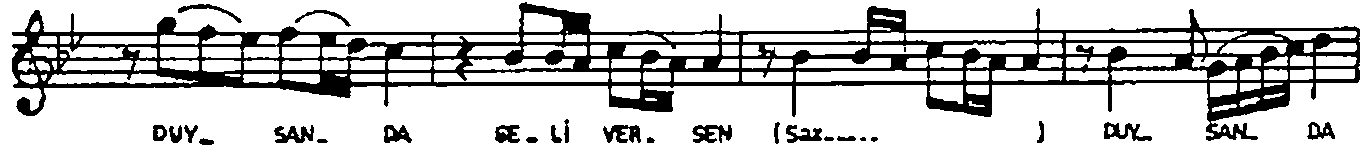
# NIHÄVEND ŞARKI

( BİR GÜLÜŞÜN BİN ÜMİT )

SÖZ : GÜZİDE TARANOĞLU  
MÜZİK : UNSAL SİLLELİ

SÜRE = 5'

♩ = 112 DÜYEK



NIHÄVEND SARKI  
BİR GÜLÜŞÜN BİN ÜMİT  
(Sahife .2)

SEV\_ DA ÇEK\_ MEK (Saz.....)

uyul

The image shows two staves of musical notation in a treble clef. The first staff contains the lyrics 'SEV\_ DA ÇEK\_ MEK (Saz.....)' written below the notes. The second staff continues the melody and ends with a double bar line and a fermata symbol. The signature 'uyul' is written at the end of the second staff.

BİR GÜLÜŞÜN BİN ÜMİT BİLSEN DE. GÜLÜVERSEN  
NASIL ÖZLEDİĞİMİ DUYSAN DA, GELİVERSEN  
KOLAY MI SANIYORSUN UZAKTAN SEVDA ÇEKMEK  
NASIL ÖZLEDİĞİMİ DUYSAN DA, GELİVERSEN.

Güzide Yaranoglu