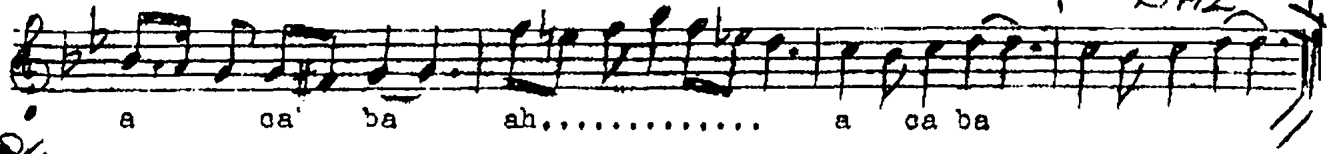




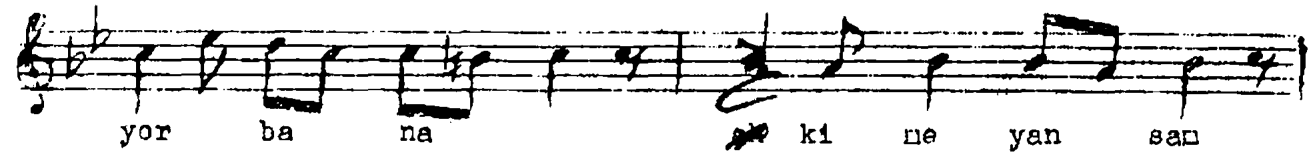
Bir te sel li a ra rın ne re de bu



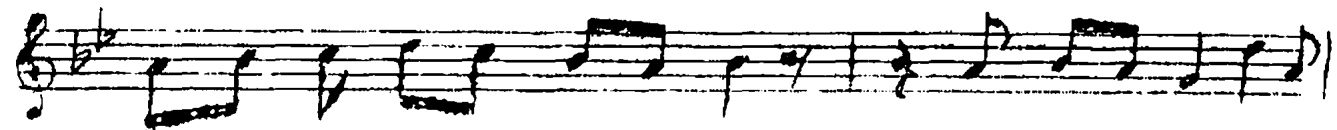
a ca ba ah..... a ca ba



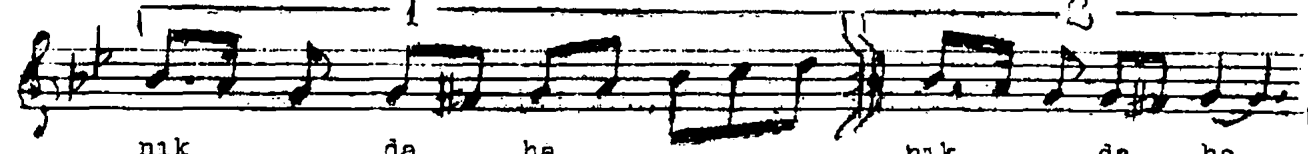
Ki ne söy le sen der di ni dertli yindi



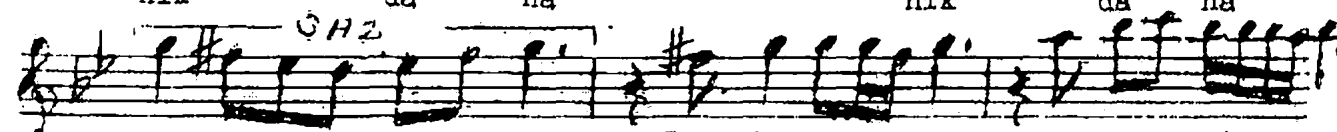
yor ba na ki ne yan san



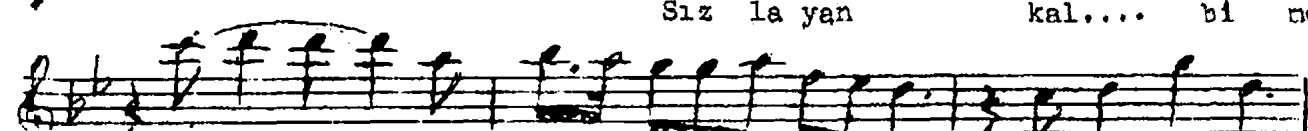
ı ğı nı o ben denya



nık da ha nık da ha



Sız la yan kal.... bi ne



yok nu..... ar tək



bir de va

Bir teselli ararın nerede bu acaba  
Kine söylesen dardını dertliyin diyor  
Kine yansan içini o benden bana  
Sızlayan kalbine yoknu artık bir deva  
Kine söylesen dardını o benden yanık