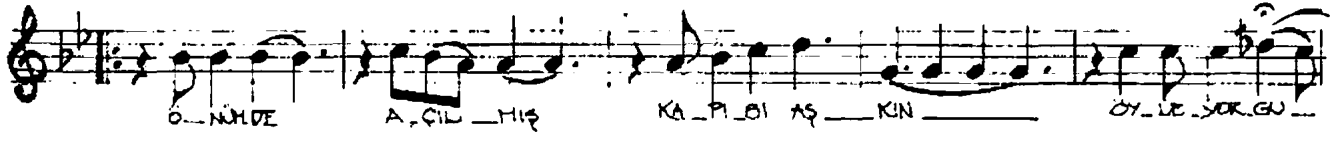


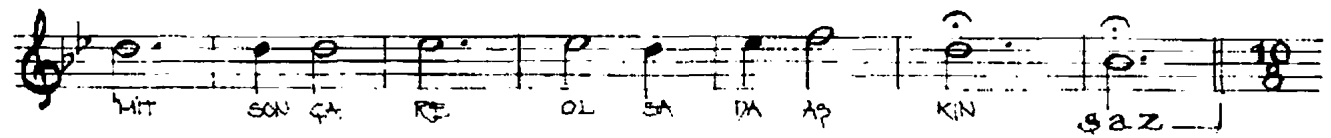
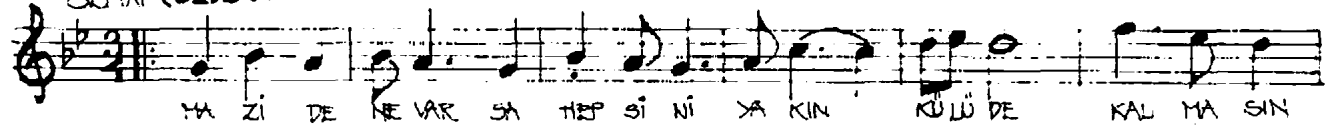
# ÖNÜNDE AÇILMIŞ KAPISI AŞKIN

NIHAVEND  
CURCUNA (♩=200)

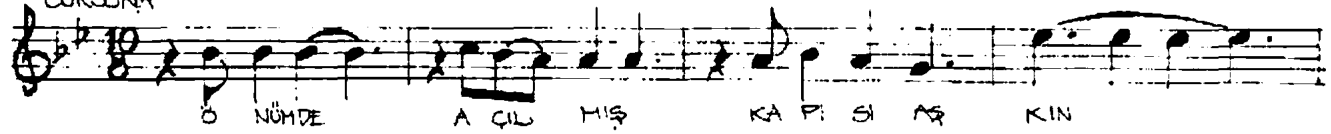
Beste: DR. SELÂHADDİN İÇLİ  
Güfte: FETHİ DİNÇER



SEMÂİ (♩=120)



CURCUNA



ÖNÜNDE AÇILMIŞ KAPISI AŞKIN  
ÖYLE YORGUNUM Kİ ARTIK, GİREMEM  
DERVE İSYAN ETTİM BENİ BIRAKIN  
TANRIYA ADANMIŞ ÖHRÜ VEREMEM

MAZİDE NE VARSA HEPSİNİ YAKIN  
KÜLÜ DE KALMASIN UÇSUN BIRAKIN  
YIKILAN DÜNYAYI BAŞTAN KURAYIM  
TEK ÜHİT SON ÇARE OLSA DA AŞKIN