

DÜYEK

NIHÂVEND ŞARKI

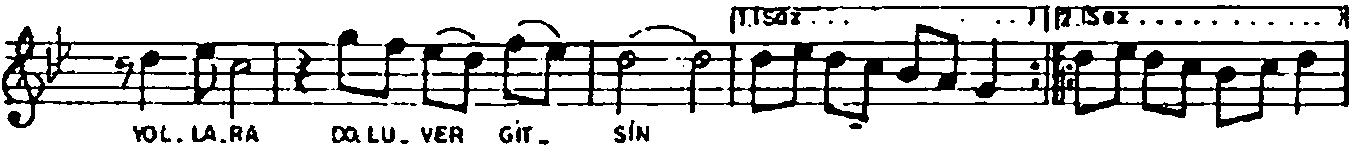
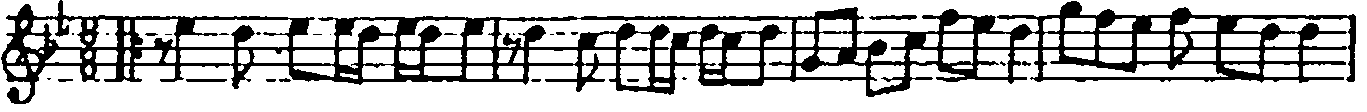
RENK VERSİN BAKIŞIN SOLAN YAPRAĞA

MÜZİK : RİDYAN MESKİNGÖR

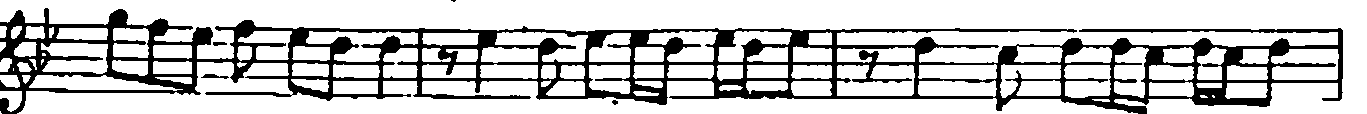
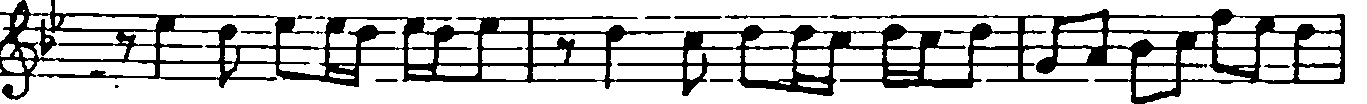
SOZ : HASAN KAYA MANIOĞLU

♩ = 192

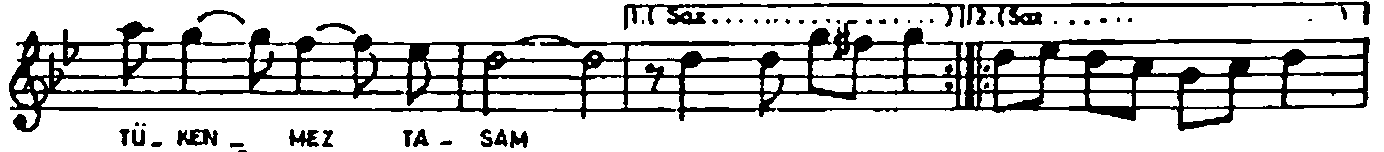
Aranöğme



Aranöğme



NIHÄVEND ŞARKI
RENK VERSİN BAKIŞIN SOLAN YAPRAĞA
(Sahin -2)



- 1 -

RENK VERSİN BAKIŞIN SOLAN YAPRAĞA,
AŞK DOLU YOLLARA DOLUYER GİTSİN..
HASRETE GÜCÜM YOK, KAÇMA UZAĞA,
DİZİMİN DİBİNDE KALIVER GİTSİN.

- 2 -

YAŞAMIŞ SAYILMAM SENDEN UZAKSAM,
SESİNİ DUYMAZSAM TÜKENMEZ TASAM.
NE OLUR YANIMDA OL DA HER AKSAM,
FELEKTEN GECELER ÇALIVER GİTSİN.