

NİHAYƏNDƏ ŞARKI

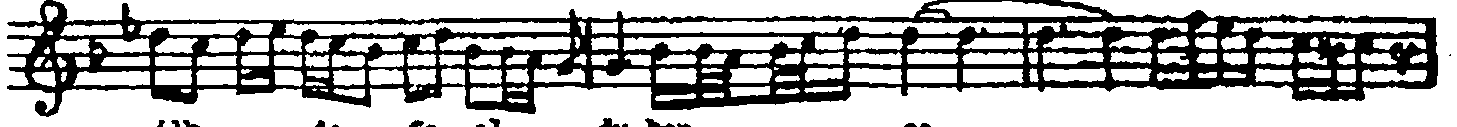
"SABAH YILLARDAN BƏRİ"

CURCUNA

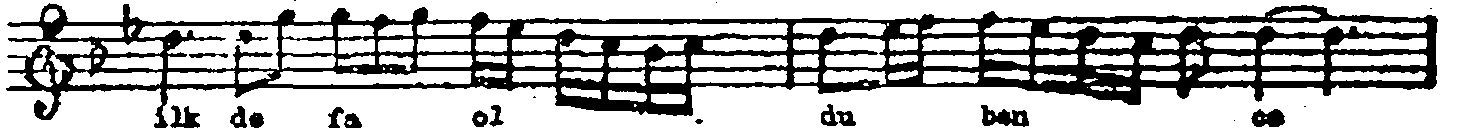
MİZİK: SƏKİ BOTOVLU
SÖZ: MƏHCƏT KƏBƏLİ



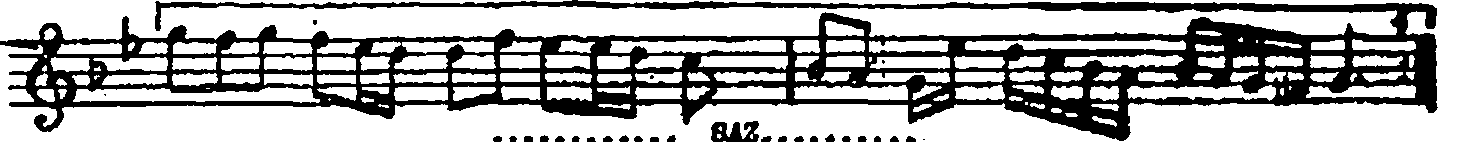
Sa bah yıl lar dan be ri



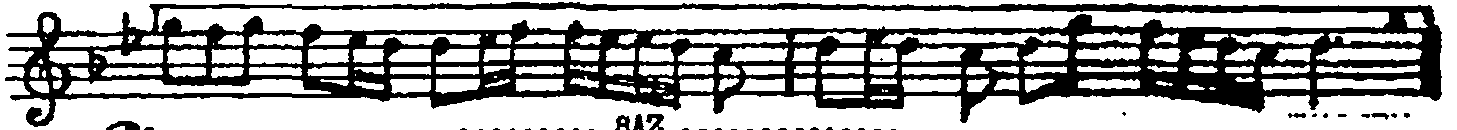
ilk de fa ol du ben ce



ilk de fa ol du ben ce



..... SAZ



..... SAZ



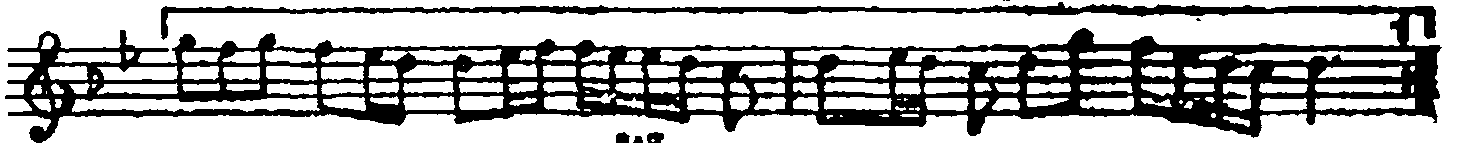
Bil m hi sen nis ge gen



her ge cem bir is gen ce



her ge cem bir is gen ce



..... SAZ

..... SAZ

Ya nan du dak la ri me

u zan bir an giz li ce

u zan bir an giz li ce

.....SAZ.....

(Yalnız bir sazla)SAZ.....

Özgen

SABAH YILLARDAN BERİ İK DEFA OLDU İNCE
 BİLLAHİ SENSİZ GEÇEN HER GECEM BİR İŞKENCE
 YANAN DUDAKLARIMA UZAN BİR AN GİZLİCE
 BİLLAHİ SENSİZ GEÇEN HER GECEM BİR İŞKENCE