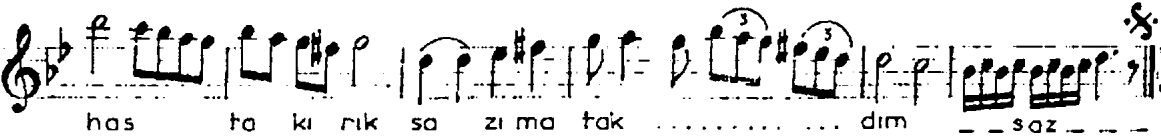
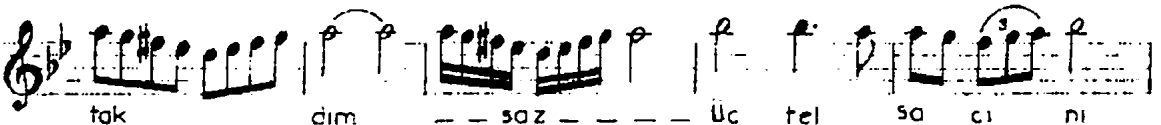
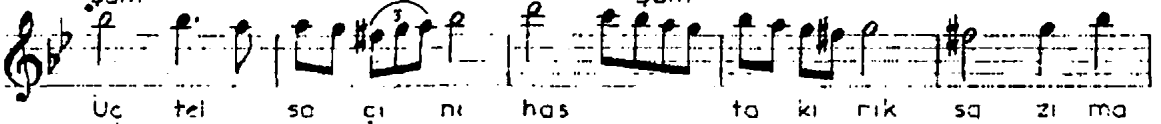
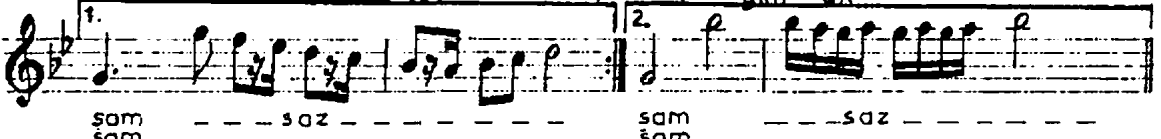
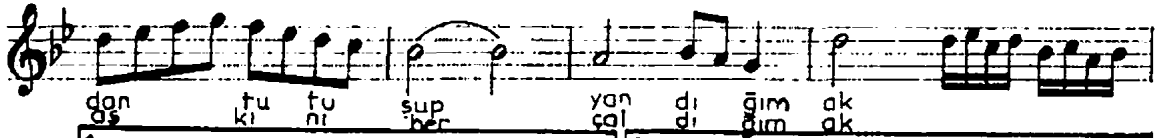
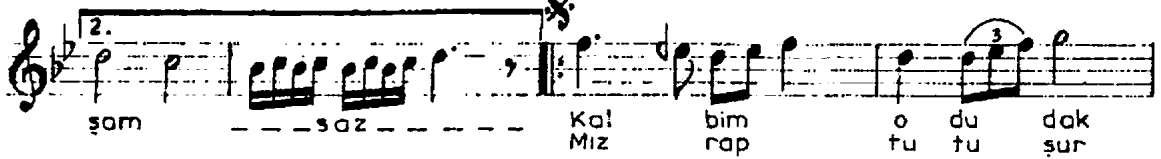
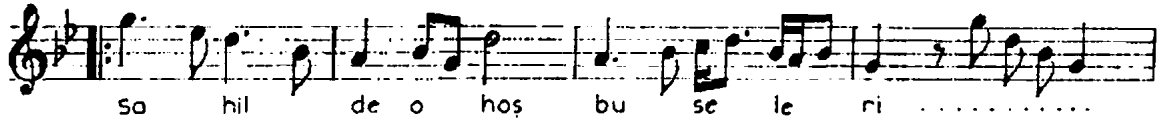
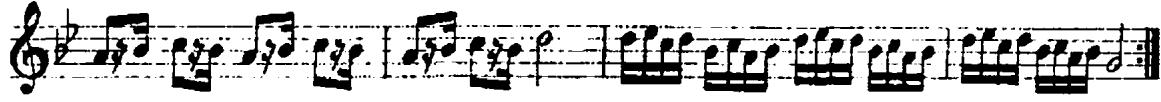
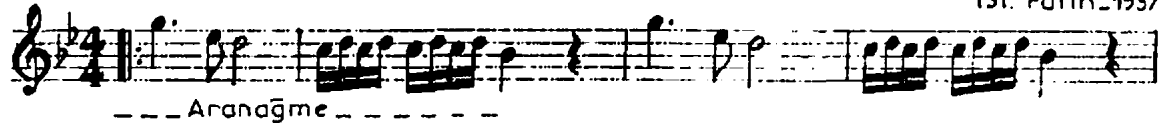


# NIHÂVEND ŞARKI

Bir sâhil hâtırası

USÛLÜ: Sofyan

BESTE  
ve : Yesârî Âsim  
GÜFTE ARSOY  
İST. Fâtih\_1937



SÂHİLDE O HOŞ BÜSELERİ ALDIĞIM AKŞAM  
KALBİM O DUDAKTAN TUTUŞUP YANDIĞIM AKŞAM  
ÜÇ TEL SAÇINI HASTA KIRIK SÂZIMA TAKTİM  
MIZRAP TUTUŞUR AŞKINI HER ÇALDIĞIM AKŞAM